

Biotin Anti-BrdU antibody ab2284

★★★★★ [6 Abreviews](#) [47 References](#) [画像数 4](#)

製品の概要

製品名	Biotin Anti-BrdU antibody
製品の詳細	Biotin Sheep polyclonal to BrdU
由来種	Sheep
標識	Biotin
アプリケーション	適用あり: IHC-P, IHC-Fr, ICC/IF, ELISA, IHC-FoFr
種交差性	交差種: Species independent
免疫原	Chemical/ Small Molecule corresponding to BrdU conjugated to keyhole limpet haemocyanin.
特記事項	<p>The Life Science industry has been in the grips of a reproducibility crisis for a number of years. Abcam is leading the way in addressing this with our range of recombinant monoclonal antibodies and knockout edited cell lines for gold-standard validation. Please check that this product meets your needs before purchasing.</p> <p>If you have any questions, special requirements or concerns, please send us an inquiry and/or contact our Support team ahead of purchase. Recommended alternatives for this product can be found below, along with publications, customer reviews and Q&As</p>

製品の特性

製品の状態	Liquid
保存方法	Shipped at 4°C. Store at +4°C short term (1-2 weeks). Store at -20°C or -80°C. Avoid freeze / thaw cycle.
バッファー	pH: 7.50 Constituent: 0.4% PBS
精製度	Protein G purified
ポリ/モノ	ポリクローナル
アイソタイプ	IgG

アプリケーション

The Abpromise guarantee **Abpromise保証は、** 次のテスト済みアプリケーションにおけるab2284の使用に適用されます
アプリケーションノートには、推奨の開始希釈率がありますが、適切な希釈率につきましてはご検討ください。

アプリケーション	Abreviews	特記事項
IHC-P	★★★★★ (3)	Use at an assay dependent concentration.
IHC-Fr	★★★★★ (1)	Use at an assay dependent concentration. Fixation in cold methanol for 30 minutes followed by immersion in 7×10^{-3} N NaOH for 10-15 seconds allows BrdU staining with the simultaneous detection of nuclear cytoplasmic and membrane assigns as well as preservation of morphological detail.
ICC/IF	★★★★★ (1)	Use at an assay dependent concentration.
ELISA		Use at an assay dependent concentration. dilute from 1/500 to 1/40,000 against 1mg/mL BrdU analyte.
IHC-FoFr	★★★★★ (1)	1/2000. 1/2000 (see Abreview).

ターゲット情報

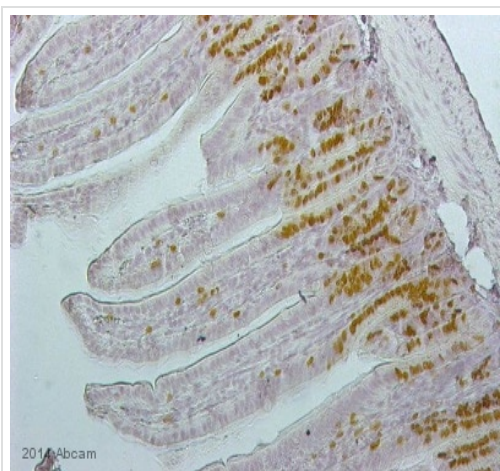
関連性

The immunocytochemical detection of bromodeoxyuridine (BrdU) incorporated into DNA is a powerful tool to study the cytokinetics of normal and neoplastic cells. In vitro or in vivo labeling of tumor cells with the thymidine analogue BrdU and the subsequent detection of incorporated BrdU with specific anti-BrdU monoclonal antibodies is an accurate and comprehensive method to quantitate the degree of DNA-synthesis. BrdU is incorporated into the newly synthesized DNA of S-phase cells may provide an estimate for the fraction of cells in S-phase. Also dynamic proliferative information such as the S-phase transit rate and the potential doubling time can be obtained, by means of bivariate BrdU/DNA flow cytometric analysis.

細胞内局在

Nuclear

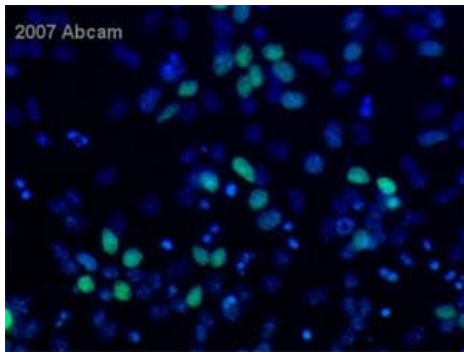
画像



ab2284 staining BrdU in mouse intestine tissue sections by Immunohistochemistry (IHC-P - paraformaldehyde-fixed, paraffin-embedded sections). Tissue was fixed with formaldehyde and blocked with 1% H_2O_2 in methanol for 12 minutes; antigen retrieval was by heat mediation in 10mM citrate, pH6. Samples were incubated with primary antibody (1/100) for 24 hours at 4°C.

Immunohistochemistry (Formalin/PFA-fixed paraffin-embedded sections) - Biotin Anti-BrdU antibody (ab2284)

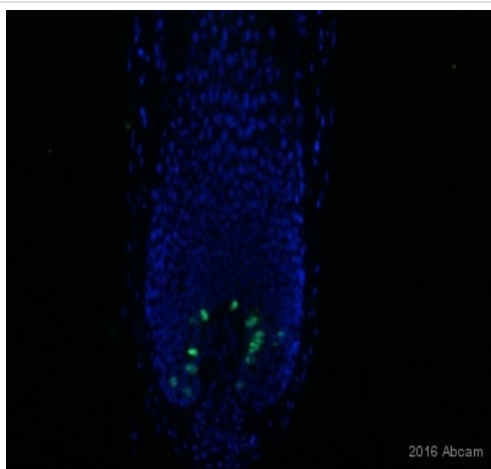
This image is courtesy of an anonymous Abreview



Immunocytochemistry/ Immunofluorescence - Biotin
Anti-BrdU antibody (ab2284)

This image is courtesy of an anonymous Abreview

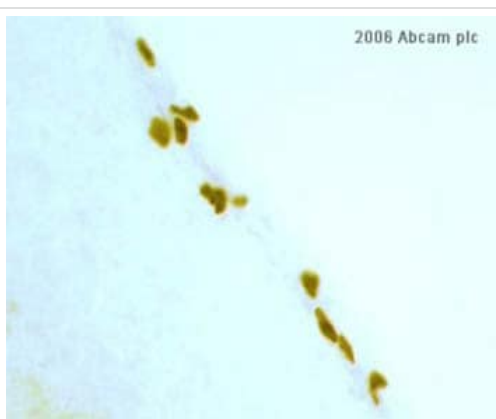
ab2284 at 1/250 staining primary E12 mouse cortex cells by ICC/IF. The cells were paraformaldehyde fixed, blocked with serum and then incubated with the antibody for 24 hours. Streptavidin conjugated to Alexa-Fluor® 488 was used as the secondary. The image shows BrdU staining with nuclei counterstained with DAPI.



Immunohistochemistry (Frozen sections) - Biotin
Anti-BrdU antibody (ab2284)

This image is courtesy of an Abreview submitted by
Ahmar Aziz

ab2284 staining BrdU in Mouse skin tissue sections by Immunohistochemistry (IHC-Fr - frozen sections). Tissue was fixed with acetone and blocked with 10% serum for 30 minutes. Samples were incubated with primary antibody (1/50 in PBS) for 12 hours at 4°C. A Streptavidin Alexa Fluor® 488-conjugated Goat polyclonal (1/500) was used as the secondary antibody.



Immunohistochemistry (Formalin/PFA-fixed paraffin-
embedded sections) - Biotin Anti-BrdU antibody
(ab2284)

This image is courtesy of an Abreview submitted by Dr
Christoph Schwarzer

ab2284 at 1/2000 dilution staining mouse free floating brain slices by Immunohistochemistry (Formalin/PFA fixed sections). The mice were treated with 100mg/kg BrdU 2 hours before fixation. Free floating 40µm vibratome sections were obtained from paraformaldehyde fixed brains, these were incubated with the antibody for 24 hours. A streptavidin-HRP complex and DAB were used for detection. The image depicts the subventricular zone.

Please note: All products are "FOR RESEARCH USE ONLY. NOT FOR USE IN DIAGNOSTIC PROCEDURES"

Our Abpromise to you: Quality guaranteed and expert technical support

- Replacement or refund for products not performing as stated on the datasheet
- Valid for 12 months from date of delivery
- Response to your inquiry within 24 hours

- We provide support in Chinese, English, French, German, Japanese and Spanish
- Extensive multi-media technical resources to help you
- We investigate all quality concerns to ensure our products perform to the highest standards

If the product does not perform as described on this datasheet, we will offer a refund or replacement. For full details of the Abpromise, please visit <https://www.abcam.co.jp/abpromise> or contact our technical team.

Terms and conditions

- Guarantee only valid for products bought direct from Abcam or one of our authorized distributors