

Biotin Anti-beta 2 Microglobulin antibody [B2M-01] ab21899

[2 References](#) [画像数 2](#)

製品の概要

製品名	Biotin Anti-beta 2 Microglobulin antibody [B2M-01]
製品の詳細	Biotin Mouse monoclonal [B2M-01] to beta 2 Microglobulin
由来種	Mouse
標識	Biotin
特異性	This antibody reacts with beta 2 Microglobulin associated with cell-surface MHC Class I molecules and other membrane antigens as well as with soluble beta 2 Microglobulin.
アプリケーション	適用あり: IHC-P, Flow Cyt
種交差性	交差種: Human 非交差種: Mouse, Rabbit, Chicken, Cow, Dog
免疫原	Full length native protein (purified) (Human).
ポジティブ・コントロール	This antibody gave a positive result in IHC in the following FFPE tissue: Human normal lung. Flow Cytometry: Human peripheral blood.
特記事項	<p>The Life Science industry has been in the grips of a reproducibility crisis for a number of years. Abcam is leading the way in addressing this with our range of recombinant monoclonal antibodies and knockout edited cell lines for gold-standard validation. Please check that this product meets your needs before purchasing.</p> <p>If you have any questions, special requirements or concerns, please send us an inquiry and/or contact our Support team ahead of purchase. Recommended alternatives for this product can be found below, along with publications, customer reviews and Q&As</p>

製品の特性

製品の状態	Liquid
保存方法	Shipped at 4°C. Store at +4°C short term (1-2 weeks). Store at -20°C or -80°C. Avoid freeze / thaw cycle.
バッファー	pH: 7.40 Preservative: 0.097% Sodium azide Constituent: PBS
精製度	Protein A purified
ポリ/モノ	モノクローナル

クローン名 B2M-01
アイソタイプ IgG2a

アプリケーション

The Abpromise guarantee **Abpromise保証は、次のテスト済みアプリケーションにおけるab21899の使用に適用されず**
アプリケーションノートには、推奨の開始希釈率がありますが、適切な希釈率につきましてはご検討ください。

アプリケーション	Abreviews	特記事項
IHC-P		Use a concentration of 10 µg/ml.
Flow Cyt		Use a concentration of 1 - 2 µg/ml.

ターゲット情報

機能 Component of the class I major histocompatibility complex (MHC). Involved in the presentation of peptide antigens to the immune system.

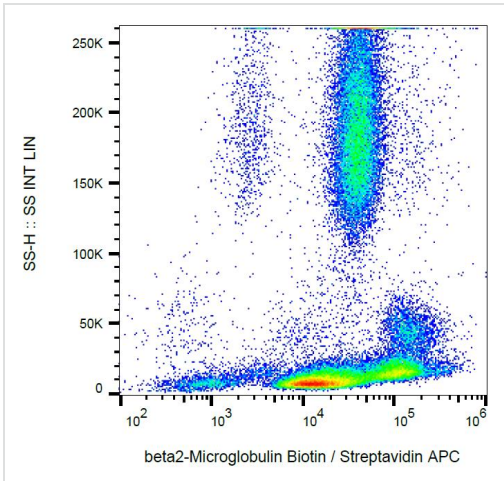
関連疾患 Defects in B2M are the cause of hypercatabolic hypoproteinemia (HYCATHYP) [MIM:241600]. Affected individuals show marked reduction in serum concentrations of immunoglobulin and albumin, probably due to rapid degradation.
Note=Beta-2-microglobulin may adopt the fibrillar configuration of amyloid in certain pathologic states. The capacity to assemble into amyloid fibrils is concentration dependent. Persistently high beta(2)-microglobulin serum levels lead to amyloidosis in patients on long-term hemodialysis.

配列類似性 Belongs to the beta-2-microglobulin family.
Contains 1 Ig-like C1-type (immunoglobulin-like) domain.

翻訳後修飾 Glycation of Ile-21 is observed in long-term hemodialysis patients.

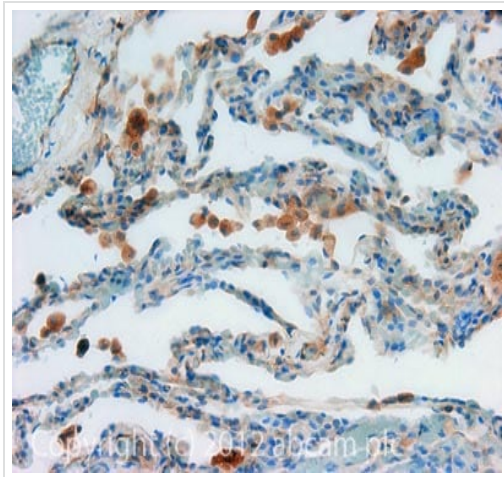
細胞内局在 Secreted. Detected in serum and urine.

画像



Flow Cytometry - Biotin Anti-beta 2 Microglobulin antibody [B2M-01] (ab21899)

Flow cytometry analysis using anti-beta2 microglobulin (B2M-01) biotin for surface staining of beta2-microglobulin in human peripheral blood



Immunohistochemistry (Formalin/PFA-fixed paraffin-embedded sections) - Biotin Anti-beta 2 Microglobulin antibody [B2M-01] (ab21899)

IHC image of beta 2 Microglobulin staining in human normal lung formalin fixed paraffin embedded tissue section, performed on a Leica Bond™ system using the standard protocol B. The section was pre-treated using heat mediated antigen retrieval with sodium citrate buffer (pH6, epitope retrieval solution 1) for 20 mins. The section was then incubated with ab21899, 10µg/ml, for 15 mins at room temperature and detected using an HRP conjugated ABC system. DAB was used as the chromogen. The section was then counterstained with haematoxylin and mounted with DPX.

For other IHC staining systems (automated and non-automated) customers should optimize variable parameters such as antigen retrieval conditions, primary antibody concentration and antibody incubation times.

Please note: All products are "FOR RESEARCH USE ONLY. NOT FOR USE IN DIAGNOSTIC PROCEDURES"

Our Abpromise to you: Quality guaranteed and expert technical support

- Replacement or refund for products not performing as stated on the datasheet
- Valid for 12 months from date of delivery
- Response to your inquiry within 24 hours
- We provide support in Chinese, English, French, German, Japanese and Spanish
- Extensive multi-media technical resources to help you
- We investigate all quality concerns to ensure our products perform to the highest standards

If the product does not perform as described on this datasheet, we will offer a refund or replacement. For full details of the Abpromise, please visit <https://www.abcam.co.jp/abpromise> or contact our technical team.

Terms and conditions

- Guarantee only valid for products bought direct from Abcam or one of our authorized distributors