


### Biotin Anti-Actin antibody ab113279

画像数 1

#### 製品の概要

|              |   |
|--------------|---|
| 製品名          | Biotin Anti-Actin antibody  |
| 製品の詳細        | Biotin Rabbit polyclonal to Actin   |
| 由来種          | Rabbit  |
| 標識           | Biotin  |
| 特異性          | The epitope recognized by ab113279 maps to the N-terminus of Human Beta-actin using the numbering given in Swiss-Prot entry P60709 (GeneID 60). The N-terminus of Beta-Actin is highly conserved with Gamma-Actin and preliminary indications are that ab113279 also recognizes Gamma- Actin  |
| アプリケーション     | <b>適用あり:</b> WB   |
| 種交差性         | <b>交差種:</b> Human<br><b>交差が予測される動物種:</b> Rat, Sheep, Rabbit, Horse, Chicken, Guinea pig, Cow, Dog, Turkey, Pig, Chimpanzee, Snake, a wide range of other species, Rhesus monkey, Gorilla, Orangutan, Xenopus tropicalis, Medaka fish   |
| 免疫原          | Synthetic peptide corresponding to Human Actin (N terminal).  |
| ポジティブ・コントロール | HeLa whole cell lysates.  |
| 特記事項         | <p>The Life Science industry has been in the grips of a reproducibility crisis for a number of years. Abcam is leading the way in addressing this with our range of recombinant monoclonal antibodies and knockout edited cell lines for gold-standard validation. Please check that this product meets your needs before purchasing.</p> <p>If you have any questions, special requirements or concerns, please send us an inquiry and/or contact our Support team ahead of purchase. Recommended alternatives for this product can be found below, along with publications, customer reviews and Q&amp;As</p> |

#### 製品の特性

|       |   |
|-------|---|
| 製品の状態 | Liquid  |
| 保存方法  | Shipped at 4°C. Store at +4°C short term (1-2 weeks). Store at -20°C long term. Avoid freeze / thaw cycle. Store In the Dark. |
| バッファー | Preservative: 0.09% Sodium azide<br>Constituent: 99% Tris citrate/phosphate   |

|           |   |
|-----------|---|
|           | pH 7 to 8   |
| 精製度       | Immunogen affinity purified   |
| 特記事項 (精製) | ab113279 was affinity purified using an epitope specific to Cytoskeletal Actin immobilized on solid support and conjugated to biotin. |
| ポリモノ      | ポリクローナル   |
| アイソタイプ    | IgG   |

## アプリケーション

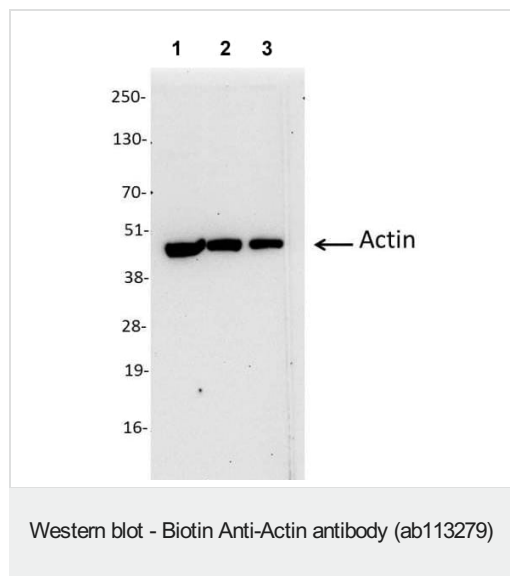
**The Abpromise guarantee**      **Abpromise保証は、次のテスト済みアプリケーションにおけるab113279の使用に適用されます**  
 アプリケーションノートには、推奨の開始希釈率がありますが、適切な希釈率につきましてはご検討ください。

| アプリケーション | Abreviews | 特記事項  |
|----------|-----------|---|
| WB       |           | 1/5000 - 1/15000. Predicted molecular weight: 42 kDa. |

## ターゲット情報

|       |  |
|-------|--|
| 機能    | Actins are highly conserved proteins that are involved in various types of cell motility and are ubiquitously expressed in all eukaryotic cells.   |
| 関連疾患  | <p>Defects in ACTA1 are the cause of nemaline myopathy type 3 (NEM3) [MIM:161800]. A form of nemaline myopathy. Nemaline myopathies are muscular disorders characterized by muscle weakness of varying severity and onset, and abnormal thread-or rod-like structures in muscle fibers on histologic examination. The phenotype at histological level is variable. Some patients present areas devoid of oxidative activity containing (cores) within myofibers. Core lesions are unstructured and poorly circumscribed.</p> <p>Defects in ACTA1 are a cause of myopathy congenital with excess of thin myofilaments (MPCETM) [MIM:161800]. A congenital muscular disorder characterized at histological level by areas of sarcoplasm devoid of normal myofibrils and mitochondria, and replaced with dense masses of thin filaments. Central cores, rods, ragged red fibers, and necrosis are absent.</p> <p>Defects in ACTA1 are a cause of congenital myopathy with fiber-type disproportion (CFTD) [MIM:255310]; also known as congenital fiber-type disproportion myopathy (CFTDM). CFTD is a genetically heterogeneous disorder in which there is relative hypotrophy of type 1 muscle fibers compared to type 2 fibers on skeletal muscle biopsy. However, these findings are not specific and can be found in many different myopathic and neuropathic conditions.</p> |
| 配列類似性 | Belongs to the actin family.   |
| 細胞内局在 | Cytoplasm > cytoskeleton.  |

## 画像



**All lanes :** Biotin Anti-Actin antibody (ab113279) at 0.07 µg/ml

**Lane 1 :** HeLa whole cell lysate at 50 µg

**Lane 2 :** HeLa whole cell lysate at 15 µg

**Lane 3 :** HeLa whole cell lysate at 5 µg

Developed using the ECL technique.

**Predicted band size:** 42 kDa

**Exposure time:** 30 seconds

**Please note:** All products are "FOR RESEARCH USE ONLY. NOT FOR USE IN DIAGNOSTIC PROCEDURES"

#### Our Abpromise to you: Quality guaranteed and expert technical support

---

- Replacement or refund for products not performing as stated on the datasheet
- Valid for 12 months from date of delivery
- Response to your inquiry within 24 hours
- We provide support in Chinese, English, French, German, Japanese and Spanish
- Extensive multi-media technical resources to help you
- We investigate all quality concerns to ensure our products perform to the highest standards

If the product does not perform as described on this datasheet, we will offer a refund or replacement. For full details of the Abpromise, please visit <https://www.abcam.co.jp/abpromise> or contact our technical team.

#### Terms and conditions

---

- Guarantee only valid for products bought direct from Abcam or one of our authorized distributors