

# Anti-Bim (phospho S65) antibody ab17935

**4 References** [画像数 1](#)

### 製品の概要

製品名	Anti-Bim (phospho S65) antibody
製品の詳細	Rabbit polyclonal to Bim (phospho S65)
由来種	Rabbit
アプリケーション	<b>適用あり:</b> WB
種交差性	<b>交差種:</b> Recombinant fragment
免疫原	Synthetic peptide. This information is proprietary to Abcam and/or its suppliers.
ポジティブ・コントロール	Hek293T co-expressing rat Bim and active MEKK1
特記事項	<p>The Life Science industry has been in the grips of a reproducibility crisis for a number of years. Abcam is leading the way in addressing this with our range of recombinant monoclonal antibodies and knockout edited cell lines for gold-standard validation. Please check that this product meets your needs before purchasing.</p> <p>If you have any questions, special requirements or concerns, please send us an inquiry and/or contact our Support team ahead of purchase. Recommended alternatives for this product can be found below, along with publications, customer reviews and Q&amp;As</p>

### 製品の特性

製品の状態	Liquid
保存方法	Shipped at 4°C. Upon delivery aliquot and store at -20°C. Avoid freeze / thaw cycles.
バッファー	<p>pH: 7.30</p> <p>Preservative: 0.05% Sodium azide</p> <p>Constituents: 50% Glycerol (glycerin, glycerine), 1% BSA</p>
精製度	Immunogen affinity purified
特記事項 (精製)	Purified from rabbit serum by sequential epitope-specific chromatography. The antibody has been negatively preadsorbed using a non-phosphopeptide corresponding to the site of phosphorylation to remove antibody that is reactive with non-phosphorylated Bim. The final product is generated by affinity chromatography using a Bim-derived peptide that is phosphorylated at serine 65 (serine 69 in the human sequence).
ポリ/モノ	ポリクローナル
アイソタイプ	IgG

アプリケーション

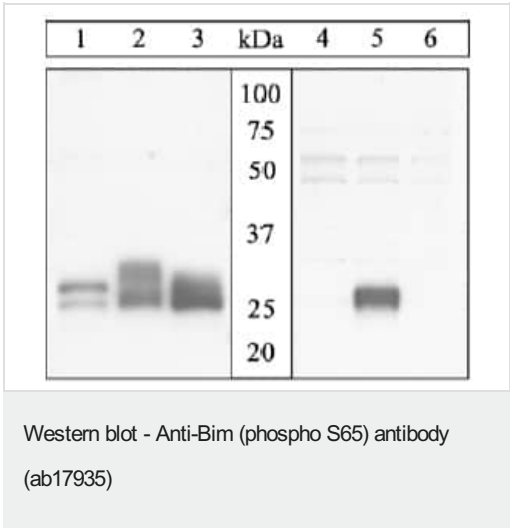
**The Abpromise guarantee**      Abpromise保証は、次のテスト済みアプリケーションにおけるab17935の使用に適用されます  
アプリケーションノートには、推奨の開始希釈率がありますが、適切な希釈率につきましてはご検討ください。

アプリケーション	Abreviews	特記事項
WB		1/1000. Detects a band of approximately 25 kDa (predicted molecular weight: 17 kDa).

ターゲット情報

機能	Induces apoptosis. Isoform BimL is more potent than isoform BimEL. Isoform Bim-alpha1, isoform Bim-alpha2 and isoform Bim-alpha3 induce apoptosis, although less potent than the isoforms BimEL, BimL and BimS. Isoform Bim-gamma induces apoptosis.
組織特異性	Isoform BimEL, isoform BimL and isoform BimS are the predominant isoforms and are ubiquitously expressed with a tissue-specific variation. Isoform Bim-gamma is most abundantly expressed in small intestine and colon, and in lower levels in spleen, prostate, testis, heart, liver and kidney.
配列類似性	Belongs to the Bcl-2 family.
ドメイン	The BH3 motif is required for Bcl-2 binding and cytotoxicity.
細胞内局在	Mitochondrion and Endomembrane system. Associated with intracytoplasmic membranes.

画像



Lysates prepared from Hek293T cells transfected with rat WT Bim alone (1, 4), cotransfected with rat WT Bim and activated MEKK1 (2, 5) or with mutant S65A Bim and MEKK1 (3, 6), were resolved by SDS-PAGE on a 14% polyacrylamide gel and transferred to PVDF. Membranes were blocked with 3% Milk-TBST buffer for one hour at room temperature, and incubated with Bim Pan antibody (1, 2, 3) or ab17935 (4, 5, 6) for two hours at room temperature in 3% Milk-TBST buffer. After washing, membranes were incubated with a goat F(ab')<sub>2</sub> anti-rabbit IgG HRP conjugate and bands were detected using the Pierce SuperSignal™ method.

The data show that the signal is detected only in lysates co-expressing rat WT Bim and active MEKK1. This signal is abolished in cells expressing mutant rat Bim S65A and MEKK1, verifying that the signal is site-phosphospecific.

Lysates prepared from Hek293T cells transfected with rat WT Bim alone (1, 4), cotransfected with rat WT Bim and activated MEKK1 (2

**Please note:** All products are "FOR RESEARCH USE ONLY. NOT FOR USE IN DIAGNOSTIC PROCEDURES"

### **Our Abpromise to you: Quality guaranteed and expert technical support**

---

- Replacement or refund for products not performing as stated on the datasheet
- Valid for 12 months from date of delivery
- Response to your inquiry within 24 hours
- We provide support in Chinese, English, French, German, Japanese and Spanish
- Extensive multi-media technical resources to help you
- We investigate all quality concerns to ensure our products perform to the highest standards

If the product does not perform as described on this datasheet, we will offer a refund or replacement. For full details of the Abpromise, please visit <https://www.abcam.co.jp/abpromise> or contact our technical team.

### **Terms and conditions**

---

- Guarantee only valid for products bought direct from Abcam or one of our authorized distributors