

Anti-Bim antibody ab7888

22 References **画像数 5**

製品の概要

製品名	Anti-Bim antibody
製品の詳細	Rabbit polyclonal to Bim
由来種	Rabbit
アプリケーション	適用あり: IHC-P, WB, ICC/IF
種交差性	交差種: Rat, Human
免疫原	Peptide corresponding to amino acids 22 to 40 of human origin. The sequence is identical to that of mouse and differs from that of rat by one amino acid.
ポジティブ・コントロール	WB: Human colon and thymus tissue lysates, Rat Myeloma Cell lysate ICC/IF: K562 cells
特記事項	<p>The Life Science industry has been in the grips of a reproducibility crisis for a number of years. Abcam is leading the way in addressing this with our range of recombinant monoclonal antibodies and knockout edited cell lines for gold-standard validation. Please check that this product meets your needs before purchasing.</p> <p>If you have any questions, special requirements or concerns, please send us an inquiry and/or contact our Support team ahead of purchase. Recommended alternatives for this product can be found below, along with publications, customer reviews and Q&As</p>

製品の特性

製品の状態	Liquid
保存方法	Shipped at 4°C. Upon delivery aliquot and store at -20°C or -80°C. Avoid repeated freeze / thaw cycles.
バッファー	pH: 7.2 Preservative: 0.02% Sodium azide
精製度	Affinity purified
ポリ/モノ	ポリクローナル
アイソタイプ	IgG

アプリケーション

The Abpromise guarantee

Abpromise保証は、次のテスト済みアプリケーションにおけるab7888の使用に適用されます

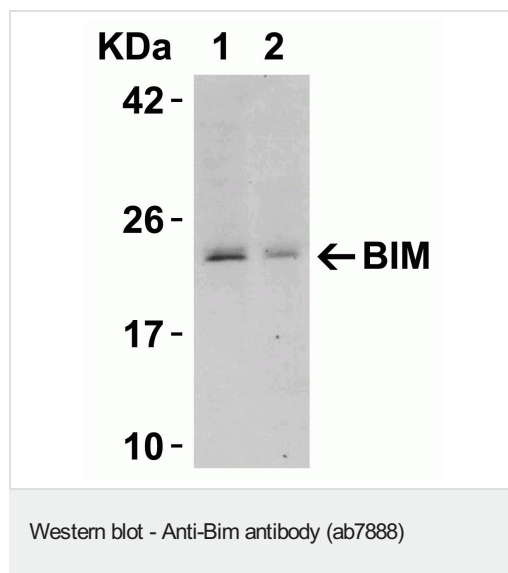
アプリケーションノートには、推奨の開始希釈率がありますが、適切な希釈率につきましてはご確認ください。

アプリケーション	Abreviews	特記事項
IHC-P		Use a concentration of 20 µg/ml.
WB		Use a concentration of 1 µg/ml. Predicted molecular weight: 23 kDa.
ICC/IF		Use at an assay dependent concentration.

ターゲット情報

機能	Induces apoptosis. Isoform BimL is more potent than isoform BimEL. Isoform Bim-alpha1, isoform Bim-alpha2 and isoform Bim-alpha3 induce apoptosis, although less potent than the isoforms BimEL, BimL and BimS. Isoform Bim-gamma induces apoptosis.
組織特異性	Isoform BimEL, isoform BimL and isoform BimS are the predominant isoforms and are ubiquitously expressed with a tissue-specific variation. Isoform Bim-gamma is most abundantly expressed in small intestine and colon, and in lower levels in spleen, prostate, testis, heart, liver and kidney.
配列類似性	Belongs to the Bcl-2 family.
ドメイン	The BH3 motif is required for Bcl-2 binding and cytotoxicity.
細胞内局在	Mitochondrion and Endomembrane system. Associated with intracytoplasmic membranes.

画像



All lanes : Anti-Bim antibody (ab7888) at 0.5 µg/ml

Lane 1 : Human thymus tissue lysate

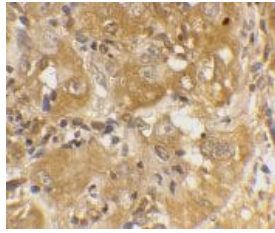
Lane 2 : Human colon tissue lysate

Lysates/proteins at 15 µg per lane.

Secondary

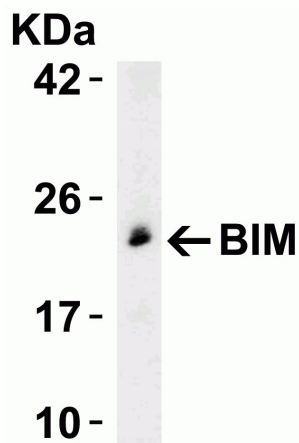
All lanes : Goat anti-rabbit IgG HRP conjugate at 1/10000 dilution

Predicted band size: 23 kDa



Immunohistochemistry (Formalin/PFA-fixed paraffin-embedded sections) - Anti-Bim antibody (ab7888)

ab7888 at 20µg/ml staining Bim in human cancer cells by IHC-P



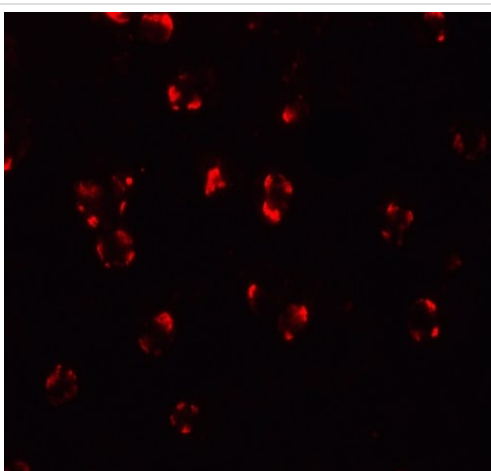
Western blot - Anti-Bim antibody (ab7888)

Anti-Bim antibody (ab7888) at 0.5 µg/ml + Rat Myeloma Cell lysate at 15 µg

Secondary

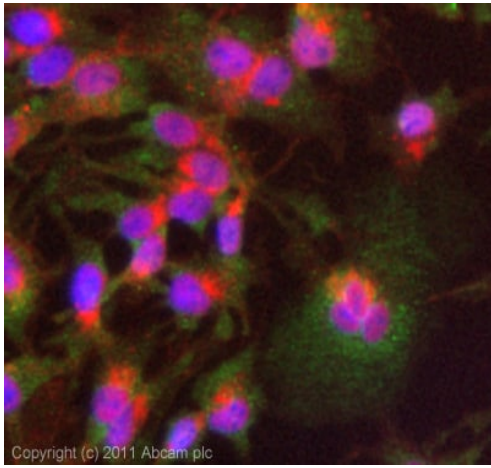
Goat anti-rabbit IgG HRP conjugate at 1/10000 dilution

Predicted band size: 23 kDa



Immunocytochemistry/ Immunofluorescence - Anti-Bim antibody (ab7888)

Immunocytochemistry/ Immunofluorescence analysis of 4% paraformaldehyde fixed human K562 cells labeling Bim with ab7888 at 20 µg/mL. Goat anti-rabbit IgG secondary antibody at 1/500 dilution was used as the secondary antibody.



Immunocytochemistry/ Immunofluorescence - Anti-Bim antibody (ab7888)

ICC/IF image of ab7888 stained HepG2 cells. The cells were 4% formaldehyde (10 min) and then incubated in 1%BSA / 10% normal goat serum / 0.3M glycine in 0.1% PBS-Tween for 1h to permeabilise the cells and block non-specific protein-protein interactions. The cells were then incubated with the antibody (ab7888, 5µg/ml) overnight at +4°C. The secondary antibody (green) was **ab96899** Dylight 488 goat anti-rabbit IgG (H+L) used at a 1/250 dilution for 1h. Alexa Fluor® 594 WGA was used to label plasma membranes (red) at a 1/200 dilution for 1h. DAPI was used to stain the cell nuclei (blue) at a concentration of 1.43µM.

Please note: All products are "FOR RESEARCH USE ONLY. NOT FOR USE IN DIAGNOSTIC PROCEDURES"

Our Abpromise to you: Quality guaranteed and expert technical support

- Replacement or refund for products not performing as stated on the datasheet
- Valid for 12 months from date of delivery
- Response to your inquiry within 24 hours
- We provide support in Chinese, English, French, German, Japanese and Spanish
- Extensive multi-media technical resources to help you
- We investigate all quality concerns to ensure our products perform to the highest standards

If the product does not perform as described on this datasheet, we will offer a refund or replacement. For full details of the Abpromise, please visit <https://www.abcam.co.jp/abpromise> or contact our technical team.

Terms and conditions

- Guarantee only valid for products bought direct from Abcam or one of our authorized distributors