


Anti-BIG1 antibody ab72061

★★★★★ [1 Abreviews](#) [1 References](#) [画像数 3](#)

製品の概要

製品名	Anti-BIG1 antibody
製品の詳細	Rabbit polyclonal to BIG1
由来種	Rabbit
アプリケーション	適用あり: IHC-P, WB, IP
種交差性	交差種: Mouse, Human 交差が予測される動物種: Rat, Cow, Dog, Pig, Chimpanzee, Rhesus monkey, Gorilla, Chinese hamster, Orangutan 
免疫原	Synthetic peptide corresponding to Human BIG1 (C terminal). Corresponding to a region between residue 1800 and the C-terminus (residue 1849) of human BIG1 (according to NP_006412.2) Database link: Q9Y6D6
ポジティブ・コントロール	Whole cell lysate from HeLa, 293T or NIH3T3 cells.
特記事項	<p>The Life Science industry has been in the grips of a reproducibility crisis for a number of years. Abcam is leading the way in addressing this with our range of recombinant monoclonal antibodies and knockout edited cell lines for gold-standard validation. Please check that this product meets your needs before purchasing.</p> <p>If you have any questions, special requirements or concerns, please send us an inquiry and/or contact our Support team ahead of purchase. Recommended alternatives for this product can be found below, along with publications, customer reviews and Q&As</p>

製品の特性

製品の状態	Liquid
保存方法	Shipped at 4°C. Upon delivery aliquot and store at -20°C. Avoid freeze / thaw cycles.
バッファー	pH: 7 Preservative: 0.09% Sodium azide Constituents: 1.815% Tris, 1.764% Sodium citrate, 0.021% PBS
精製度	Immunogen affinity purified
ポリ/モノ	ポリクローナル
アイソタイプ	IgG

アプリケーション

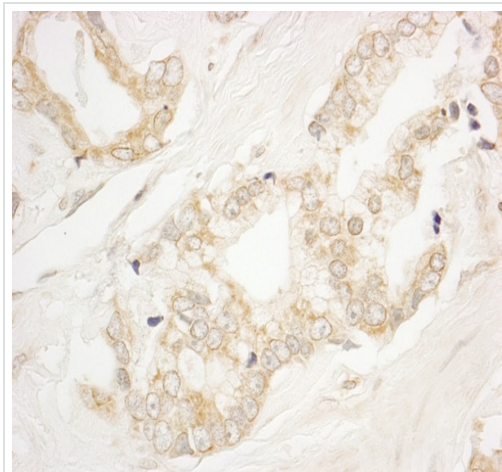
The Abpromise guarantee Abpromise保証は、 次のテスト済みアプリケーションにおけるab72061の使用に適用されます
アプリケーションノートには、推奨の開始希釈率がありますが、適切な希釈率につきましてはご検討ください。

アプリケーション	Abreviews	特記事項
IHC-P		1/500 - 1/2000. Perform heat mediated antigen retrieval with Tris/EDTA buffer pH 9.0 before commencing with IHC staining protocol.
WB	★★★★★ (1)	1/1000 - 1/10000. Detects a band of approximately 250 kDa (predicted molecular weight: 208 kDa).
IP		Use at 2-5 µg/mg of lysate.

ターゲット情報

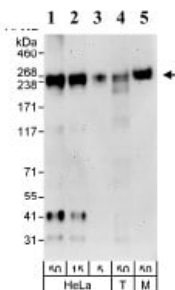
関連性	BIG1 is a brefeldin A-inhibited guanine nucleotide exchange protein (GEP) that activates ADP-ribosylation factor (ARF) GTPases and functions in vesicle formation from Golgi membranes.
細胞内局在	Cytoplasmic, Golgi Apparatus and Nuclear

画像



Immunohistochemistry (Formalin/PFA-fixed paraffin-embedded sections) analysis of human prostate carcinoma tissue labelling BIG1 with ab72061 at 1/1000 (1µg/ml). Detection: DAB.

Immunohistochemistry (Formalin/PFA-fixed paraffin-embedded sections) - Anti-BIG1 antibody (ab72061)



Western blot - Anti-BIG1 antibody (ab72061)

All lanes : Anti-BIG1 antibody (ab72061) at 0.1 µg/ml

Lane 1 : Whole

cell lysate from HeLa cells at 50 µg

Lane 2 : Whole

cell lysate from HeLa cells at 15 µg

Lane 3 : Whole

cell lysate from HeLa cells at 5 µg

Lane 4 : Whole

cell lysate from 293T cells at 50 µg

Lane 5 : Whole

cell lysate from NIH 3T3 cells at 50 µg

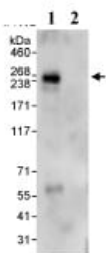
Developed using the ECL technique.

Predicted band size: 208 kDa

Observed band size: 250 kDa

Additional bands at: 31 kDa, 41 kDa. We are unsure as to the identity of these extra bands.

Exposure time: 3 minutes



Immunoprecipitation - Anti-BIG1 antibody (ab72061)

Detection of Human BIG1 by Immunoprecipitation in 1 mg whole cell lysate from HeLa cells, using ab72061 at 3 µg/mg lysate (lane 1) or a control rabbit IgG (lane 2). Subsequent Western blot detection was performed using ab72061 at 1 µg/ml on 20% of the immunoprecipitate.

Please note: All products are "FOR RESEARCH USE ONLY. NOT FOR USE IN DIAGNOSTIC PROCEDURES"

Our Abpromise to you: Quality guaranteed and expert technical support

- Replacement or refund for products not performing as stated on the datasheet
- Valid for 12 months from date of delivery
- Response to your inquiry within 24 hours

- We provide support in Chinese, English, French, German, Japanese and Spanish
- Extensive multi-media technical resources to help you
- We investigate all quality concerns to ensure our products perform to the highest standards

If the product does not perform as described on this datasheet, we will offer a refund or replacement. For full details of the Abpromise, please visit <https://www.abcam.co.jp/abpromise> or contact our technical team.

Terms and conditions

- Guarantee only valid for products bought direct from Abcam or one of our authorized distributors