


Anti-BICD2 antibody ab117818

7 References [画像数 2](#)

製品の概要

製品名	Anti-BICD2 antibody
製品の詳細	Rabbit polyclonal to BICD2
由来種	Rabbit
アプリケーション	適用あり: WB, IP
種交差性	交差種: Human 交差が予測される動物種: Rabbit, Guinea pig, Chimpanzee, Rhesus monkey, Gorilla, Orangutan, Elephant 
免疫原	Synthetic peptide, corresponding to a region within amino acids 375-425 of Human BICD2 (NP_056065.1).
ポジティブ・コントロール	HeLa, 293T and Jurkat whole cell lysate (ab7899).
特記事項	<p>The Life Science industry has been in the grips of a reproducibility crisis for a number of years. Abcam is leading the way in addressing this with our range of recombinant monoclonal antibodies and knockout edited cell lines for gold-standard validation. Please check that this product meets your needs before purchasing.</p> <p>If you have any questions, special requirements or concerns, please send us an inquiry and/or contact our Support team ahead of purchase. Recommended alternatives for this product can be found below, along with publications, customer reviews and Q&As</p>

製品の特性

製品の状態	Liquid
保存方法	Shipped at 4°C. Upon delivery aliquot and store at -20°C. Avoid freeze / thaw cycles.
バッファー	<p>pH: 7</p> <p>Preservative: 0.09% Sodium azide</p> <p>Constituent: 99% Tris citrate/phosphate</p> <p>pH: 7-8</p>
精製度	Immunogen affinity purified
特記事項 (精製)	ab117818 was affinity purified using an epitope specific to BICD2 immobilized on solid support.
ポリ/モノ	ポリクローナル

アプリケーション

The Abpromise guarantee

Abpromise保証は、次のテスト済みアプリケーションにおけるab117818の使用に適用されます

アプリケーションノートには、推奨の開始希釈率がありますが、適切な希釈率につきましてはご検討ください。

アプリケーション	Abreviews	特記事項
WB		1/2000 - 1/10000. Predicted molecular weight: 94 kDa.
IP		Use at 2-10 µg/mg of lysate.

ターゲット情報

機能

May play a role in the dynein-dynactin interactions on the surface of membranous organelles, by associating with these complexes. Regulates coat complex coatomer protein I (COPI)-independent Golgi-endoplasmic reticulum transport by recruiting the dynein-dynactin motor complex.

組織特異性

Ubiquitous.

配列類似性

Belongs to the BicD family.

ドメイン

The fourth coiled coil region is involved in Golgi targeting and in the interaction with DCTN2.

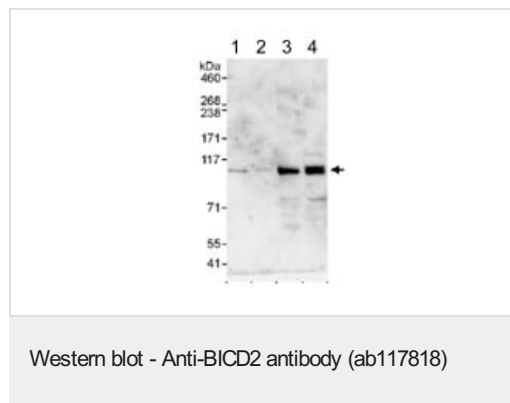
翻訳後修飾

Phosphorylated by NEK9 in vitro.

細胞内局在

Golgi apparatus. Cytoplasm > cytoskeleton. In interphase cells mainly localizes to the Golgi complex and colocalizes with dynactin at microtubule plus ends (By similarity). Its localization is dependent on microtubule morphology.

画像



All lanes : Anti-BICD2 antibody (ab117818) at 0.1 µg/ml

Lane 1 : HeLa whole cell lysate at 50 µg

Lane 2 : HeLa whole cell lysate at 15 µg

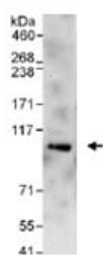
Lane 3 : 293T whole cell lysate at 50 µg

Lane 4 : Jurkat whole cell lysate at 50 µg

Developed using the ECL technique.

Predicted band size: 94 kDa

Exposure time: 3 minutes



Immunoprecipitation - Anti-BICD2 antibody
(ab117818)

Detection of Human BICD2 by Immunoprecipitation in Whole cell lysate from HeLa (1 mg for IP, 20% of IP loaded) cells using ab117818 at 6 µg/mg of lysate. ab117818 at 0.4 µg/ml was used for subsequent WB detection of the immunoprecipitate.

Detection: Chemiluminescence with exposure time of 30 seconds.

Please note: All products are "FOR RESEARCH USE ONLY. NOT FOR USE IN DIAGNOSTIC PROCEDURES"

Our Abpromise to you: Quality guaranteed and expert technical support

- Replacement or refund for products not performing as stated on the datasheet
- Valid for 12 months from date of delivery
- Response to your inquiry within 24 hours
- We provide support in Chinese, English, French, German, Japanese and Spanish
- Extensive multi-media technical resources to help you
- We investigate all quality concerns to ensure our products perform to the highest standards

If the product does not perform as described on this datasheet, we will offer a refund or replacement. For full details of the Abpromise, please visit <https://www.abcam.co.jp/abpromise> or contact our technical team.

Terms and conditions

- Guarantee only valid for products bought direct from Abcam or one of our authorized distributors