

Anti-BFL-1/GRS antibody ab45413

[1 Abreviews](#) [9 References](#) [画像数 3](#)

製品の概要

製品名	Anti-BFL-1/GRS antibody
製品の詳細	Rabbit polyclonal to BFL-1/GRS
由来種	Rabbit
特異性	This antibody is specific for Bcl2A1 / GRS.
アプリケーション	適用あり: IHC-P, WB, ICC
種交差性	交差種: Mouse, Human
免疫原	Synthetic peptide corresponding to Human BFL-1/GRS (C terminal).
ポジティブ・コントロール	WB: Human lung and kidney tissue. IHC: Mouse kidney tissue. ICC: Mouse kidney cells.
特記事項	<p>The Life Science industry has been in the grips of a reproducibility crisis for a number of years. Abcam is leading the way in addressing this with our range of recombinant monoclonal antibodies and knockout edited cell lines for gold-standard validation. Please check that this product meets your needs before purchasing.</p> <p>If you have any questions, special requirements or concerns, please send us an inquiry and/or contact our Support team ahead of purchase. Recommended alternatives for this product can be found below, along with publications, customer reviews and Q&As</p>

製品の特性

製品の状態	Liquid
保存方法	Shipped at 4°C. Store at +4°C.
バッファー	pH: 7.2 Preservative: 0.02% Sodium azide Constituent: PBS
精製度	Immunogen affinity purified
ポリ/モノ	ポリクローナル
アイソタイプ	IgG

アプリケーション

Abpromise保証は、 次のテスト済みアプリケーションにおけるab45413の使用に適用されます

The Abpromise guarantee

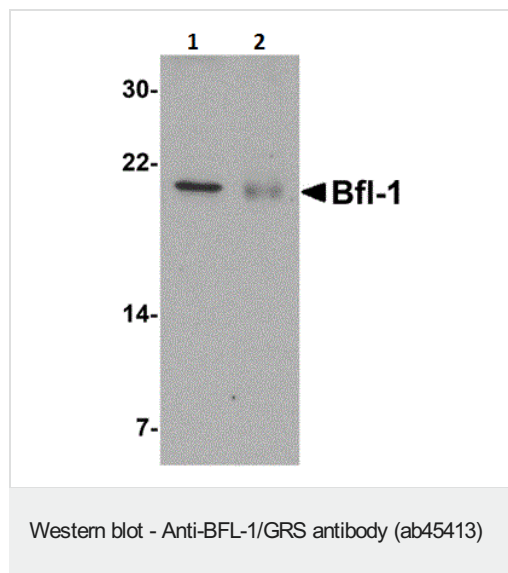
アプリケーションノートには、推奨の開始希釈率がありますが、適切な希釈率につきましてはご確認ください。

アプリケーション	Abreviews	特記事項
IHC-P		Use a concentration of 10 - 20 µg/ml. IHC-P suitable for Mouse samples only
WB		Use a concentration of 0.5 - 1 µg/ml. Predicted molecular weight: 20 kDa. WB suitable for Human samples only
ICC		Use a concentration of 20 µg/ml. ICC suitable for Mouse samples only

ターゲット情報

機能	Retards apoptosis induced by IL-3 deprivation. May function in the response of hemopoietic cells to external signals and in maintaining endothelial survival during infection.
組織特異性	Seems to be restricted to the hematopoietic compartment. Expressed in peripheral blood, spleen, and bone marrow, at moderate levels in lung, small intestine and testis, at a minimal levels in other tissues. Also found in vascular smooth muscle cells and hematopoietic malignancies.
配列類似性	Belongs to the Bcl-2 family.
細胞内局在	Cytoplasm.

画像

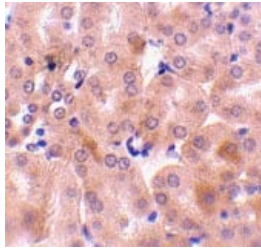


All lanes : Anti-BFL-1/GRS antibody (ab45413) at 1 µg/ml

Lane 1 : Human kidney tissue lysate

Lane 2 : Human lung tissue lysate

Predicted band size: 20 kDa



ab45413 at 10µg/ml staining BFL-1/GRS in mouse kidney tissue by IHC

Immunohistochemistry (Formalin/PFA-fixed paraffin-embedded sections) - Anti-BFL-1/GRS antibody (ab45413)

Immunocytochemistry - Anti-BFL-1/GRS antibody (ab45413)

Immunocytochemistry of BFL-1/GRS in Mouse Kidney cells using ab45413 at 20 ug/ml.

Please note: All products are "FOR RESEARCH USE ONLY. NOT FOR USE IN DIAGNOSTIC PROCEDURES"

Our Abpromise to you: Quality guaranteed and expert technical support

- Replacement or refund for products not performing as stated on the datasheet
- Valid for 12 months from date of delivery
- Response to your inquiry within 24 hours
- We provide support in Chinese, English, French, German, Japanese and Spanish
- Extensive multi-media technical resources to help you
- We investigate all quality concerns to ensure our products perform to the highest standards

If the product does not perform as described on this datasheet, we will offer a refund or replacement. For full details of the Abpromise, please visit <https://www.abcam.co.jp/abpromise> or contact our technical team.

Terms and conditions

- Guarantee only valid for products bought direct from Abcam or one of our authorized distributors