



Anti-BFL-1/GRS antibody ab106825

画像数 1

製品の概要

製品名	Anti-BFL-1/GRS antibody
製品の詳細	Goat polyclonal to BFL-1/GRS
由来種	Goat
特異性	ab106825 is expected to recognize both reported isoforms (NP_004040.1; NP_001108207.1).
アプリケーション	適用あり: WB
種交差性	交差種: Human 交差が予測される動物種: Cow, Dog 
免疫原	Synthetic peptide corresponding to Human BFL-1/GRS aa 60-69 (internal sequence). Sequence: C-NVVSVDTART Database link: NP_004040.1  Run BLAST with  Run BLAST with
ポジティブ・コントロール	Human bone marrow lysate
特記事項	<p>The Life Science industry has been in the grips of a reproducibility crisis for a number of years. Abcam is leading the way in addressing this with our range of recombinant monoclonal antibodies and knockout edited cell lines for gold-standard validation. Please check that this product meets your needs before purchasing.</p> <p>If you have any questions, special requirements or concerns, please send us an inquiry and/or contact our Support team ahead of purchase. Recommended alternatives for this product can be found below, along with publications, customer reviews and Q&As</p>

製品の特性

製品の状態	Liquid
保存方法	Shipped at 4°C. Upon delivery aliquot and store at -20°C. Avoid freeze / thaw cycles.
バッファー	pH: 7.30 Preservative: 0.02% Sodium azide Constituents: Tris buffered saline, 0.5% BSA
精製度	Immunogen affinity purified
特記事項 (精製)	ab106825 was purified from goat serum by ammonium sulphate precipitation followed by antigen

affinity chromatography using the immunizing peptide.

ポリ/モノ

ポリクローナル

アイソタイプ

IgG

アプリケーション

The Abpromise guarantee

Abpromise保証は、次のテスト済みアプリケーションにおけるab106825の使用に適用されます

アプリケーションノートには、推奨の開始希釈率がありますが、適切な希釈率につきましてはご検討ください。

アプリケーション	Abreviews	特記事項
WB		Use a concentration of 0.1 - 0.3 µg/ml. Detects a band of approximately 20 kDa (predicted molecular weight: 20 kDa). 1 hour primary incubation is recommended for this product.

ターゲット情報

機能

Retards apoptosis induced by IL-3 deprivation. May function in the response of hemopoietic cells to external signals and in maintaining endothelial survival during infection.

組織特異性

Seems to be restricted to the hematopoietic compartment. Expressed in peripheral blood, spleen, and bone marrow, at moderate levels in lung, small intestine and testis, at a minimal levels in other tissues. Also found in vascular smooth muscle cells and hematopoietic malignancies.

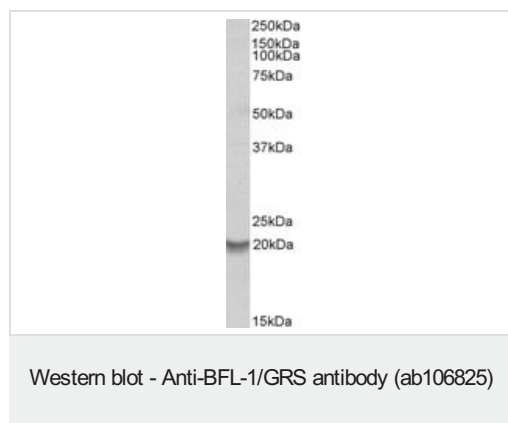
配列類似性

Belongs to the Bcl-2 family.

細胞内局在

Cytoplasm.

画像



Anti-BFL-1/GRS antibody (ab106825) at 0.2 µg/ml + Human Bone Marrow lysate in RIPA buffer at 35 µg

Developed using the ECL technique.

Predicted band size: 20 kDa

Observed band size: 20 kDa

Primary incubation was 1 hour.

Please note: All products are "FOR RESEARCH USE ONLY. NOT FOR USE IN DIAGNOSTIC PROCEDURES"

Our Abpromise to you: Quality guaranteed and expert technical support

- Replacement or refund for products not performing as stated on the datasheet
- Valid for 12 months from date of delivery
- Response to your inquiry within 24 hours
- We provide support in Chinese, English, French, German, Japanese and Spanish
- Extensive multi-media technical resources to help you
- We investigate all quality concerns to ensure our products perform to the highest standards

If the product does not perform as described on this datasheet, we will offer a refund or replacement. For full details of the Abpromise, please visit <https://www.abcam.co.jp/abpromise> or contact our technical team.

Terms and conditions

- Guarantee only valid for products bought direct from Abcam or one of our authorized distributors