

# Anti-beta Galactosidase antibody ab9361

★★★★★ [37 Abreviews](#) [529 References](#) [画像数 7](#)

### 製品の概要

製品名	Anti-beta Galactosidase antibody
製品の詳細	Chicken polyclonal to beta Galactosidase
由来種	Chicken
アプリケーション	<b>適用あり:</b> IHC-Fr/I, IHC-FoFr, ICC/IF, IHC-Fr, IHC-P
種交差性	<b>交差種:</b> Escherichia coli
免疫原	Full length native protein (purified). The immunogen was purified beta-galactosidase from Escherichia coli.
ポジティブ・コントロール	IHC-P: Mouse e13 stomach and liver and thyroid tissues IHC (Fr): Mouse retinal tissue. IHC (PFA/Fr): Mouse frozen spinal section tissue. ICC/IF: CHO cells transfected with Beta-Galactosidase constructs, fruit fly central nervous system glia cells and HEK293T cells transfected with a b-gal expressing plasmid.
特記事項	<p>The Life Science industry has been in the grips of a reproducibility crisis for a number of years. Abcam is leading the way in addressing this with our range of recombinant monoclonal antibodies and knockout edited cell lines for gold-standard validation. Please check that this product meets your needs before purchasing.</p> <p>If you have any questions, special requirements or concerns, please send us an inquiry and/or contact our Support team ahead of purchase. Recommended alternatives for this product can be found below, along with publications, customer reviews and Q&amp;As</p>

### 製品の特性

製品の状態	Liquid
保存方法	Shipped at 4°C. Store at +4°C short term (1-2 weeks). Upon delivery aliquot. Store at -20°C or -80°C. Avoid freeze / thaw cycle.
バッファー	pH: 7.40 Preservative: 0.097% Sodium azide Constituent: 0.0268% PBS
精製度	Immunogen affinity purified
特記事項 (精製)	Antibodies were solid phase absorbed then immunoaffinity purified using purified beta-galactosidase immobilized on a solid phase.
ポリ/モノ	ポリクローナル

## アプリケーション

**The Abpromise guarantee** Abpromise保証は、 次のテスト済みアプリケーションにおけるab9361の使用に適用されます  
アプリケーションノートには、推奨の開始希釈率がありますが、適切な希釈率につきましてはご検討ください。

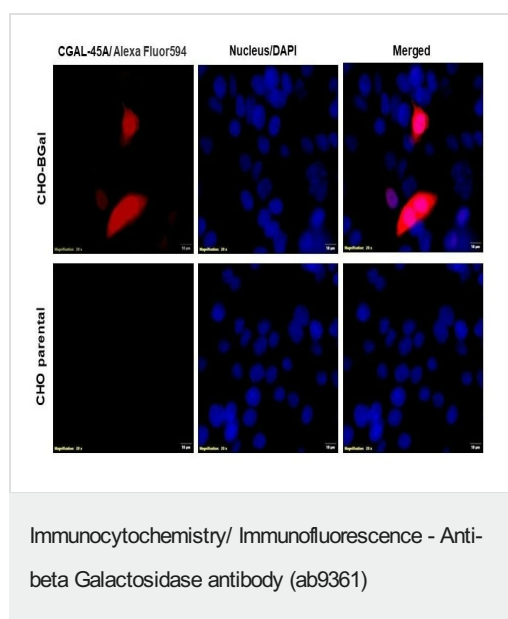
アプリケーション	Abreviews	特記事項
IHC-FrFI	★★★★★ (4)	Use at an assay dependent concentration.
IHC-FoFr	★★★★★ (4)	1/1000 - 1/2000.
ICC/IF	★★★★★ (9)	1/250 - 1/2000.
IHC-Fr	★★★★★ (9)	Use at an assay dependent concentration.
IHC-P	★★★★★ (8)	1/200 - 1/2000. Perform heat mediated antigen retrieval with Tris/EDTA buffer pH 9.0 before commencing with IHC staining protocol.

## ターゲット情報

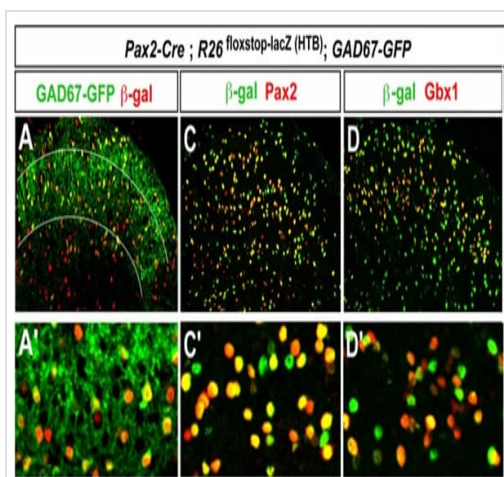
**関連性** Beta galactosidase is coded by a gene (lac z) in the lac operon of Escherichia coli. It is a metalloenzyme that splits lactose into glucose and galactose. It hydrolyzes terminal, non-reducing beta-D-galactose residues in beta-D-galactosides. Activation by cations seems to be substrate dependent. K<sup>+</sup>, Na<sup>+</sup>, NH<sub>4</sub><sup>+</sup>, Rb<sup>+</sup>, Cs<sup>+</sup> and Mn<sup>++</sup> all activate enzyme activity based upon the substrate used.

**細胞内局在** Cytoplasmic

## 画像



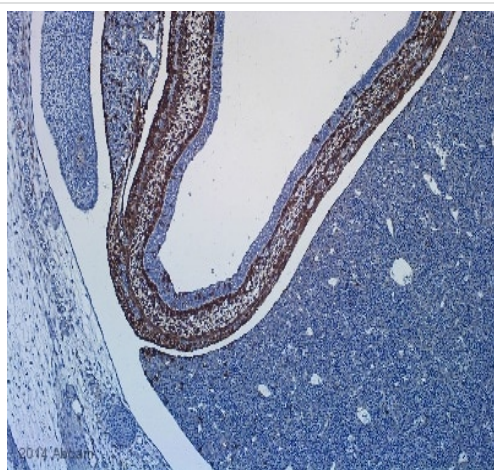
Immunofluorescent analysis of 4% paraformaldehyde (PFA)-fixed, permeabilized with 0.1% Triton X-100 in CHO cells transfected with Beta-Galactosidase constructs (named as CHO-BGal) labelling Beta Galactosidase with ab9361 at 1/1000 dilution (1 µg/mL), followed by Donkey Anti-chicken IgY (H&L), Alexa Fluor594 conjugated antibody at 1/1000 dilution (1 µg/mL) (Red). Nucleus was counterstained with DAPI (Blue). Images also showed Parallel staining in parental CHO cell line.



Immunohistochemistry (PFA perfusion fixed frozen sections) - Anti-beta Galactosidase antibody (ab9361)

Image from PLoS One. 2013; 8(11): e77928, Fig 2, doi: 10.1371/journal.pone.0077928 Reproduced under the Creative Commons license <http://creativecommons.org/licenses/by/4.0/>

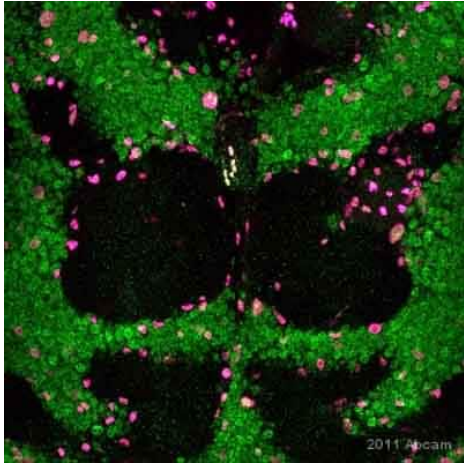
P0-adult mice were euthanized and perfused with 4% paraformaldehyde in PBS (PF). Their spinal cords were then post-fixed for 30–60 mins in 4% PF at 4°C (P0) or at room temperature (adult). Spinal cords were rinsed and cryoprotected in 20% sucrose in PBS (4°C) prior to embedding in OCT (Tissue-Tek). Immunostaining of frozen spinal sections was performed by incubating 20 µm thick sections with primary antibodies, which were then detected using species-specific secondary antibodies conjugated with Cy2, Cy3 and Cy5 or FITC. ab9361 was used at 1:1000.



Immunohistochemistry (Formalin/PFA-fixed paraffin-embedded sections) - Anti-beta Galactosidase antibody (ab9361)

This image is courtesy of an Abreview submitted by Laurel Baglia

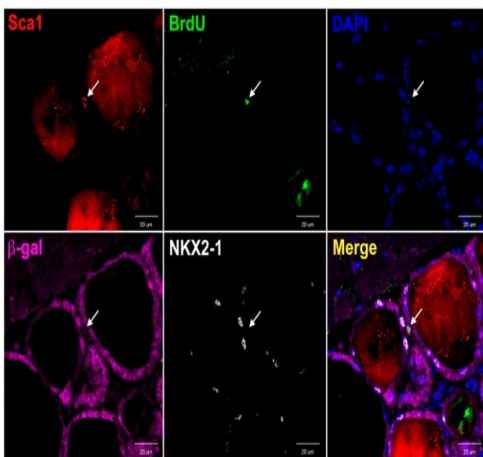
ab9361 staining beta Galactosidase in mouse e13 stomach and liver tissue sections by Immunohistochemistry (IHC-P - paraformaldehyde-fixed, paraffin-embedded sections). Tissue was fixed with Davidson's fixative, permeabilized with 0.5% Triton-X 100 and blocked with 10% serum for 30 minutes at 22°C; antigen retrieval was by heat mediation in a citrate buffer. Samples were incubated with primary antibody (1/500 in TBST + 10% goat serum) for 16 hours at 4°C. A Biotin-conjugated goat anti-chicken IgY polyclonal (1/500) was used as the secondary antibody.



Immunocytochemistry/ Immunofluorescence - Anti-beta Galactosidase antibody (ab9361)

Image courtesy of Dr Sean Speese by Abreview.

ab9361 staining beta Galactosidase in fruit fly central nervous system glia cells by Immunocytochemistry/ Immunofluorescence. The cells were fixed in paraformaldehyde, permeabilised in 0.1% Triton. Samples were then incubated with primary antibody at 1/2000 for 12 hours at 4°C. The secondary antibody used was a donkey anti-chicken monoclonal conjugated to DyLight® 649 (pink) used at a 1/400 dilution. Nuclei stained with a pan nuclear marker (green).

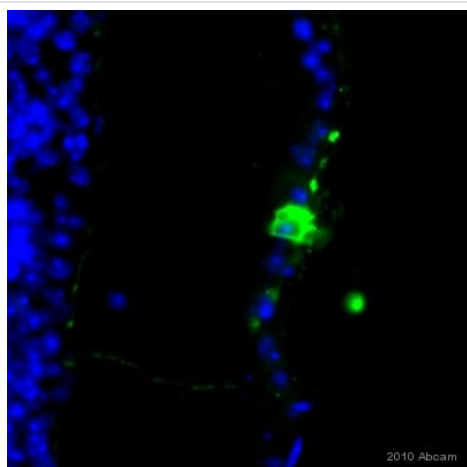


Immunohistochemistry (Formalin/PFA-fixed paraffin-embedded sections) - Anti-beta Galactosidase antibody (ab9361)

Image from PLoS One. 2013; 8(11): e80801, Fig 1B, doi: 10.1371/journal.pone.0080801 Reproduced under the Creative Commons license <https://creativecommons.org/publicdomain/zero/1.0/>

Ab9361 staining Beta galactosidase in Mouse thyroid tissue sections by Immunohistochemistry (PFA perfusion fixed frozen sections). Tissue samples were fixed 10% buffered formalin, cut into 3-4 micron slices, blocked with 10% normal goat serum and antigen retrieval was by heat mediation in citrate buffer. The sample was incubated with the following primary antibodies; anti-BrdU, anti-Sca1 ([ab109211](#), 1:600), anti-NKX2-1 and anti-β-gal (ab9361, 1:1000). Sections were incubated with the first primary antibody (anti-Sca1) for 1 hour at room temperature. After washing with PBS, sections were incubated with the first secondary antibody (Alexa Fluor 555 goat anti-rabbit IgG) and washed with PBS. Sections were then incubated with normal serum (5% rabbit serum) from the same host species as the first primary antibodies for 1 hour at room temperature and washed with PBS. Sections were further incubated with an excess of unconjugated Fab antibody derived from the same host species as the primary antibody for 1 hour at room temperature and washed with PBS. The sections were finally incubated with the mixed second primary antibodies (anti-BrdU, anti-β-gal, anti-NKX2-1) overnight at 4°C, washed with PBS, and were incubated with the second secondary antibody (Alexa Fluor

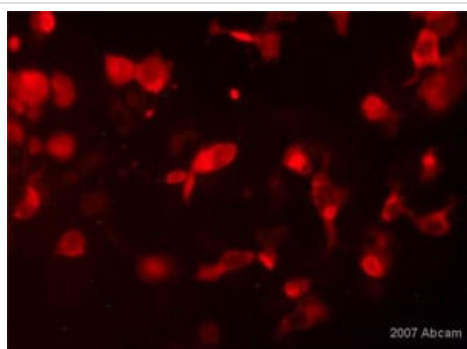
488 goat anti-rat IgG, Dylight 650 goat anti-chicken IgY, Dylight 594 goat anti-rabbit IgG) for 1 hour at room temperature and washed with PBS. DAPI dye was used to stain the nuclei of cells.



Immunohistochemistry (Frozen sections) - Anti-beta Galactosidase antibody (ab9361)

This image is courtesy of an Abreview submitted by Dr Steven Hughes

ab9361 staining Beta Galactosidase in mouse retinal tissue sections by IHC-Fr (Frozen sections). Tissue samples were fixed with formaldehyde, permeabilized with 0.2% triton-X and blocked with 5% serum for 1 hour at 23°C. The sample was incubated with primary antibody (1/1500 in PBS, 2% serum, 0.2% Triton-X) at 4°C for 16 hours. An Alexa Fluor® 488-conjugated Goat monoclonal to chicken IgY (1/200) was used as secondary antibody.



Immunocytochemistry/ Immunofluorescence - Anti-beta Galactosidase antibody (ab9361)

This image is courtesy of an Abreview submitted by Dr Deon Wolpowitz

ab9361 at 1/250 staining human HEK293T cells by ICC/IF. The cell line was transfected with a b-gal expressing plasmid, and x-gal staining was performed on adjacent wells. The cells were paraformaldehyde fixed and blocked with serum prior to incubation with the antibody for 16 hours. A Texas Red conjugated donkey anti-chicken antibody was used as the secondary.

**Please note:** All products are "FOR RESEARCH USE ONLY. NOT FOR USE IN DIAGNOSTIC PROCEDURES"

### Our Abpromise to you: Quality guaranteed and expert technical support

- Replacement or refund for products not performing as stated on the datasheet
- Valid for 12 months from date of delivery
- Response to your inquiry within 24 hours
- We provide support in Chinese, English, French, German, Japanese and Spanish
- Extensive multi-media technical resources to help you
- We investigate all quality concerns to ensure our products perform to the highest standards

If the product does not perform as described on this datasheet, we will offer a refund or replacement. For full details of the Abpromise, please visit <https://www.abcam.co.jp/abpromise> or contact our technical team.

#### **Terms and conditions**

---

- Guarantee only valid for products bought direct from Abcam or one of our authorized distributors