


# Anti-beta Dystroglycan antibody ab43125

★★★★☆ [3 Abreviews](#) [5 References](#) [画像数 2](#)

### 製品の概要

---

製品名	Anti-beta Dystroglycan antibody
製品の詳細	Rabbit polyclonal to beta Dystroglycan
由来種	Rabbit
アプリケーション	<b>適用あり:</b> WB
種交差性	<b>交差種:</b> Human <b>交差が予測される動物種:</b> Mouse, Rabbit, Cow, Dog 
免疫原	Synthetic peptide conjugated to KLH derived from within residues 650 - 750 of Human Dystroglycan precursor. Immunogen <a href="#">の所有権に関して</a> (Peptide available as <a href="#">ab43750</a> .)
ポジティブ・コントロール	WB: Human brain, heart, skeletal muscle, testes (data not shown), kidney (data not shown), colon (data not shown) tissue lysates and HEK293T cell lysate.
特記事項	<p>The Life Science industry has been in the grips of a reproducibility crisis for a number of years. Abcam is leading the way in addressing this with our range of recombinant monoclonal antibodies and knockout edited cell lines for gold-standard validation. Please check that this product meets your needs before purchasing.</p> <p>If you have any questions, special requirements or concerns, please send us an inquiry and/or contact our Support team ahead of purchase. Recommended alternatives for this product can be found below, along with publications, customer reviews and Q&amp;As</p>

### 製品の特性

---

製品の状態	Liquid
保存方法	Shipped at 4°C. Store at +4°C short term (1-2 weeks). Upon delivery aliquot. Store at -20°C or -80°C. Avoid freeze / thaw cycle.
バッファー	pH: 7.40 Preservative: 0.02% Sodium azide Constituent: PBS
精製度	Batches of this product that have a concentration < 1mg/ml may have BSA added as a stabilising agent. If you would like information about the formulation of a specific lot, please contact our scientific support team who will be happy to help. Immunogen affinity purified

ポリ/モノ  
アイソタイプ

ポリクローナル  
IgG

## アプリケーション

**The Abpromise guarantee** **Abpromise保証は、次のテスト済みアプリケーションにおけるab43125の使用に適用されます**  
アプリケーションノートには、推奨の開始希釈率がありますが、適切な希釈率につきましてはご検討ください。

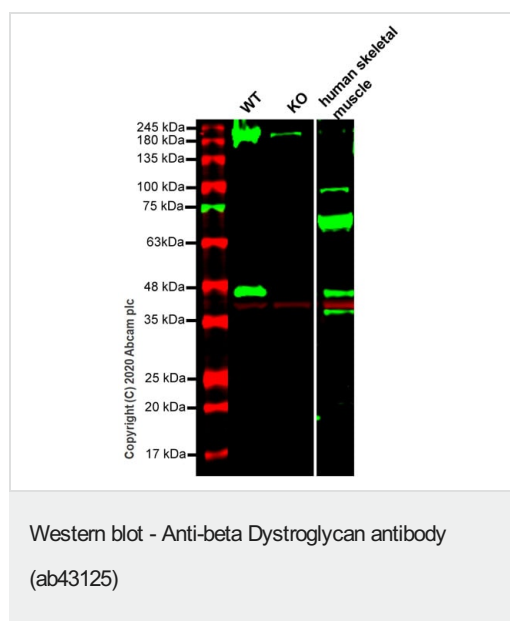
アプリケーション	Abreviews	特記事項
WB		Use a concentration of 1 µg/ml. Detects a band of approximately 43 kDa (predicted molecular weight: 43 kDa).

## ターゲット情報

**関連性** Dystroglycans are essential elements of the neuromuscular junction (NMJ). The gene for dystroglycan is expressed as a precursor protein that is post translationally cleaved into a 156 kDa extracellular peripheral membrane protein called alpha dystroglycan and a 43 kDa transmembrane protein, beta dystroglycan. The latter protein contains a PPxY motif that promotes binding to WW domain containing proteins, such as utrophin and dystrophin. Phosphorylation at tyrosine 892 within the PPxY motif may regulate c Src interactions with beta dystroglycan, as well as inhibit interactions with WW domain proteins. In skeletal muscle, beta dystroglycan is normally localized to the plasma membrane, however phosphorylation of Tyr892 leads to localization of beta dystroglycan to endosomal compartments along with c Src. Thus, phosphorylation at Tyr892 may have important roles in altering the localization of beta dystroglycan during NMJ formation.

**細胞内局在** Type I membrane protein.

## 画像



**All lanes** : Anti-beta Dystroglycan antibody (ab43125) at 1/500 dilution

**Lane 1** : Wild-type HEK293T cell lysate

**Lane 2** : DAG1 knockout HEK293T cell lysate

**Lane 3** : Human skeletal muscle tissue lysate

Lysates/proteins at 20 µg per lane.

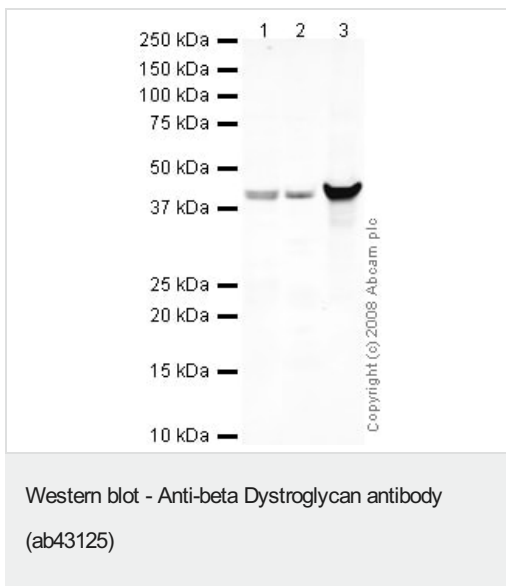
Performed under reducing conditions.

**Predicted band size:** 43 kDa

**Observed band size:** 43 kDa

**Lanes 1-3:** Merged signal (red and green). Green - ab43125 observed at 43 kDa. Red - loading control, **ab8245** observed at 37 kDa.

ab43125 Anti-beta Dystroglycan antibody was shown to specifically react with beta Dystroglycan in wild-type HEK293T cells. Loss of signal was observed when knockout cell line **ab266263** (knockout cell lysate **ab257192**) was used. Wild-type and beta Dystroglycan knockout samples were subjected to SDS-PAGE. ab43125 and Anti-GAPDH antibody [6C5] - Loading Control (**ab8245**) were incubated overnight at 4°C at 1 in 500 dilution and 1 in 20000 dilution respectively. Blots were developed with Goat anti-Rabbit IgG H&L (IRDye® 800CW) preadsorbed (**ab216773**) and Goat anti-Mouse IgG H&L (IRDye® 680RD) preadsorbed (**ab216776**) secondary antibodies at 1 in 10000 dilution for 1 hour at room temperature before imaging.



**All lanes :** Anti-beta Dystroglycan antibody (ab43125) at 1 µg/ml

**Lane 1 :** Human brain tissue lysate - total protein (**ab29466**)

**Lane 2 :** Human heart tissue lysate - total protein (**ab29431**)

**Lane 3 :** Human skeletal muscle tissue lysate - total protein (**ab29330**)

Lysates/proteins at 10 µg per lane.

#### Secondary

**All lanes :** IRDye 680 Conjugated Goat Anti-Rabbit IgG (H+L) at 1/10000 dilution

Performed under reducing conditions.

**Predicted band size:** 43 kDa

**Observed band size:** 43 kDa

**Please note:** All products are "FOR RESEARCH USE ONLY. NOT FOR USE IN DIAGNOSTIC PROCEDURES"

#### Our Abpromise to you: Quality guaranteed and expert technical support

- Replacement or refund for products not performing as stated on the datasheet
- Valid for 12 months from date of delivery

- Response to your inquiry within 24 hours
- We provide support in Chinese, English, French, German, Japanese and Spanish
- Extensive multi-media technical resources to help you
- We investigate all quality concerns to ensure our products perform to the highest standards

If the product does not perform as described on this datasheet, we will offer a refund or replacement. For full details of the Abpromise, please visit <https://www.abcam.co.jp/abpromise> or contact our technical team.

### **Terms and conditions**

---

- Guarantee only valid for products bought direct from Abcam or one of our authorized distributors