

Anti-beta Catenin (phospho Y86) antibody ab29036

1 References [画像数 1](#)

製品の概要

製品名	Anti-beta Catenin (phospho Y86) antibody
製品の詳細	Rabbit polyclonal to beta Catenin (phospho Y86)
由来種	Rabbit
アプリケーション	適用あり: WB
種交差性	交差種: Human
免疫原	Synthetic peptide corresponding to Human beta Catenin (phospho Y86) conjugated to keyhole limpet haemocyanin.
特記事項	<p>The Life Science industry has been in the grips of a reproducibility crisis for a number of years. Abcam is leading the way in addressing this with our range of recombinant monoclonal antibodies and knockout edited cell lines for gold-standard validation. Please check that this product meets your needs before purchasing.</p> <p>If you have any questions, special requirements or concerns, please send us an inquiry and/or contact our Support team ahead of purchase. Recommended alternatives for this product can be found below, along with publications, customer reviews and Q&As</p>

製品の特性

製品の状態	Liquid
保存方法	Shipped at 4°C. Upon delivery aliquot and store at -20°C. Avoid freeze / thaw cycles.
バッファー	Preservative: 0.05% Sodium azide Constituents: 50% Glycerol, 0.1% BSA
精製度	Immunogen affinity purified
特記事項 (精製)	Ab29036 was cross adsorbed to phospho tyrosine coupled to agarose prior to immunogen affinity chromatography (without carrier protein).
ポリ/モノ	ポリクローナル
アイソタイプ	IgG

アプリケーション

The Abpromise guarantee

Abpromise保証は、次のテスト済みアプリケーションにおけるab29036の使用に適用されません

アプリケーションノートには、推奨の開始希釈率がありますが、適切な希釈率につきましてはご確認ください。

アプリケーション	Abreviews	特記事項
WB		

追加情報

ELISA: 1/2000.

WB: 1/1000. Membrane could be incubated with diluted antibody in 5% non fat milk, PBS, 0.04% Tween 20 for 1 hour at room temperature. Predicted molecular weight: 86 kDa.

Not yet tested in other applications.

Optimal dilutions/concentrations should be determined by the end user.

ターゲット情報

機能

Key downstream component of the canonical Wnt signaling pathway. In the absence of Wnt, forms a complex with AXIN1, AXIN2, APC, CSNK1A1 and GSK3B that promotes phosphorylation on N-terminal Ser and Thr residues and ubiquitination of CTNNB1 via BTRC and its subsequent degradation by the proteasome. In the presence of Wnt ligand, CTNNB1 is not ubiquitinated and accumulates in the nucleus, where it acts as a coactivator for transcription factors of the TCF/LEF family, leading to activate Wnt responsive genes.

Involved in the regulation of cell adhesion. The majority of beta-catenin is localized to the cell membrane and is part of E-cadherin/catenin adhesion complexes which are proposed to couple cadherins to the actin cytoskeleton.

組織特異性

Expressed in several hair follicle cell types: basal and peripheral matrix cells, and cells of the outer and inner root sheaths. Expressed in colon.

関連疾患

Defects in CTNNB1 are associated with colorectal cancer (CRC) [MIM:114500].

Note=Activating mutations in CTNNB1 have oncogenic activity resulting in tumor development.

Somatic mutations are found in various tumor types, including colon cancers, ovarian and prostate carcinomas, hepatoblastoma (HB), hepatocellular carcinoma (HCC). HBs are malignant embryonal tumors mainly affecting young children in the first three years of life.

Defects in CTNNB1 are a cause of pilomatixoma (PTR) [MIM:132600]; a common benign skin tumor.

Defects in CTNNB1 are a cause of medulloblastoma (MDB) [MIM:155255]. MDB is a malignant, invasive embryonal tumor of the cerebellum with a preferential manifestation in children.

Defects in CTNNB1 are a cause of susceptibility to ovarian cancer (OC) [MIM:167000]. Ovarian cancer common malignancy originating from ovarian tissue. Although many histologic types of ovarian neoplasms have been described, epithelial ovarian carcinoma is the most common form.

Ovarian cancers are often asymptomatic and the recognized signs and symptoms, even of late-stage disease, are vague. Consequently, most patients are diagnosed with advanced disease.

Note=A chromosomal aberration involving CTNNB1 is found in salivary gland pleiomorphic adenomas, the most common benign epithelial tumors of the salivary gland. Translocation t(3;8)(p21;q12) with PLAG1.

配列類似性

Belongs to the beta-catenin family.

Contains 12 ARM repeats.

翻訳後修飾

Phosphorylation by GSK3B requires prior phosphorylation of Ser-45 by another kinase.

Phosphorylation proceeds then from Thr-41 to Ser-37 and Ser-33.

EGF stimulates tyrosine phosphorylation. Phosphorylation on Tyr-654 decreases CDH1 binding and enhances TBP binding.

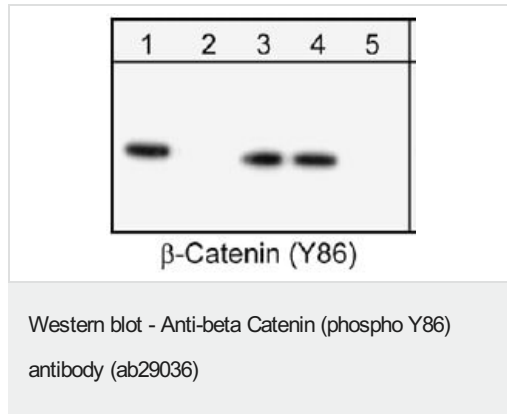
Ubiquitinated by the SCF(BTRC) E3 ligase complex when phosphorylated by GSK3B, leading to

its degradation. Ubiquitinated by a E3 ubiquitin ligase complex containing UBE2D1, SIAH1, CACYBP/SIP, SKP1, APC and TBL1X, leading to its subsequent proteasomal degradation.

細胞内局在

Cytoplasm. Nucleus. Cytoplasm > cytoskeleton. Cell junction > adherens junction. Cell junction. Cell membrane. Cytoplasmic when it is unstabilized (high level of phosphorylation) or bound to CDH1. Translocates to the nucleus when it is stabilized (low level of phosphorylation). Interaction with GLIS2 and MUC1 promotes nuclear translocation. Interaction with EMD inhibits nuclear localization.

画像



Western blot analysis of beta-Catenin immunoprecipitated from lysates (20ug) prepared from A431 cells treated with pervanadate. The immunoprecipitation was performed using mouse monoclonal anti-beta-Catenin. The blots were probed with anti-phospho-beta-Catenin (Tyr-86) polyclonal antibody. The immunoprecipitated beta-Catenin was untreated (lane 1) or treated with alkaline phosphatase (lane 5) then probed with the antibody. In addition, the antibody was used in the presence of phospho-beta-Catenin (Tyr-86) peptide (lane 2), beta-Catenin (C-terminal) peptide (lane 3), or BSA-coupled phosphotyrosine (lane 4).

Please note: All products are "FOR RESEARCH USE ONLY. NOT FOR USE IN DIAGNOSTIC PROCEDURES"

Our Abpromise to you: Quality guaranteed and expert technical support

- Replacement or refund for products not performing as stated on the datasheet
- Valid for 12 months from date of delivery
- Response to your inquiry within 24 hours
- We provide support in Chinese, English, French, German, Japanese and Spanish
- Extensive multi-media technical resources to help you
- We investigate all quality concerns to ensure our products perform to the highest standards

If the product does not perform as described on this datasheet, we will offer a refund or replacement. For full details of the Abpromise, please visit <https://www.abcam.co.jp/abpromise> or contact our technical team.

Terms and conditions

- Guarantee only valid for products bought direct from Abcam or one of our authorized distributors