

Anti-beta Catenin (phospho Y142) antibody ab27798

★★★★☆ [6 Abreviews](#) [59 References](#) [画像数 3](#)

製品の概要

製品名	Anti-beta Catenin (phospho Y142) antibody
製品の詳細	Rabbit polyclonal to beta Catenin (phospho Y142)
由来種	Rabbit
特異性	The antibody detects beta Catenin on SDS PAGE immunoblots of Hct116 src transformed cells treated with pervanadate, but not in control cells. Similar results were observed in other pervanadate treated cell lines, such as A431 and human endothelial cells. Immunogen sequence has one amino acid difference from a sequence around tyrosine 133 of human gamma Catenin. These human sequences are highly conserved in rat and mouse beta Catenins. Batches could vary in the level phospho Y133 of gamma catenin recognition.
アプリケーション	適用あり: WB, ICC/IF
種交差性	交差種: Mouse, Human
免疫原	Synthetic peptide corresponding to Human beta Catenin (phospho Y142) conjugated to keyhole limpet haemocyanin. Database link: P35222
特記事項	<p>Tyrosine phosphorylation of beta Catenin can regulate its interaction with critical components of adherens junctions. Both Fer and Fyn kinases phosphorylate tyrosine 142 in vitro and overexpression of these kinases in epithelial cells disrupts interactions between alpha and beta Catenins. The phosphorylation of tyrosine 142 may act as a switch from the adhesive to the transcriptional role of beta Catenin. Thus, site specific tyrosine phosphorylation of beta Catenin may regulate specific protein protein interactions, leading to changes in cell adhesion.</p> <p>The Life Science industry has been in the grips of a reproducibility crisis for a number of years. Abcam is leading the way in addressing this with our range of recombinant monoclonal antibodies and knockout edited cell lines for gold-standard validation. Please check that this product meets your needs before purchasing.</p> <p>If you have any questions, special requirements or concerns, please send us an inquiry and/or contact our Support team ahead of purchase. Recommended alternatives for this product can be found below, along with publications, customer reviews and Q&As</p>

製品の特性

製品の状態	Liquid
保存方法	Shipped at 4°C. Store at +4°C short term (1-2 weeks). Upon delivery aliquot. Store at -20°C.

Avoid freeze / thaw cycle.

バッファー

Preservative: 0.05% Sodium azide

Constituents: PBS, 50% Glycerol, 0.1% BSA

精製度

Immunogen affinity purified

一次抗体 備考

Tyrosine phosphorylation of beta Catenin can regulate its interaction with critical components of adherens junctions. Both Fer and Fyn kinases phosphorylate tyrosine 142 in vitro and overexpression of these kinases in epithelial cells disrupts interactions between alpha and beta Catenins. The phosphorylation of tyrosine 142 may act as a switch from the adhesive to the transcriptional role of beta Catenin. Thus, site specific tyrosine phosphorylation of beta Catenin may regulate specific protein protein interactions, leading to changes in cell adhesion.

ポリクローナル

ポリクローナル

アイソタイプ

IgG

アプリケーション

The Abpromise guarantee

Abpromise保証は、次のテスト済みアプリケーションにおけるab27798の使用に適用されず

アプリケーションノートには、推奨の開始希釈率がありますが、適切な希釈率につきましてはご検討ください。

アプリケーション	Abreviews	特記事項
WB	★★★★☆ (3)	1/500. Detects a band of approximately 92 kDa (predicted molecular weight: 86 kDa). IP with beta catenin antibody is recommended, followed by probing with ab27798. This improve the distinction between beta Catenin Tyr 142 and gamma Catenin Tyr 133 (Swiss-Prot ID P14923).
ICC/IF	★★★★☆ (1)	1/50.

ターゲット情報

機能

Key downstream component of the canonical Wnt signaling pathway. In the absence of Wnt, forms a complex with AXIN1, AXIN2, APC, CSNK1A1 and GSK3B that promotes phosphorylation on N-terminal Ser and Thr residues and ubiquitination of CTNNB1 via BTRC and its subsequent degradation by the proteasome. In the presence of Wnt ligand, CTNNB1 is not ubiquitinated and accumulates in the nucleus, where it acts as a coactivator for transcription factors of the TCF/LEF family, leading to activate Wnt responsive genes.

Involved in the regulation of cell adhesion. The majority of beta-catenin is localized to the cell membrane and is part of E-cadherin/catenin adhesion complexes which are proposed to couple cadherins to the actin cytoskeleton.

組織特異性

Expressed in several hair follicle cell types: basal and peripheral matrix cells, and cells of the outer and inner root sheaths. Expressed in colon.

関連疾患

Defects in CTNNB1 are associated with colorectal cancer (CRC) [MIM:114500].

Note=Activating mutations in CTNNB1 have oncogenic activity resulting in tumor development.

Somatic mutations are found in various tumor types, including colon cancers, ovarian and prostate carcinomas, hepatoblastoma (HB), hepatocellular carcinoma (HCC). HBs are malignant embryonal tumors mainly affecting young children in the first three years of life.

Defects in CTNNB1 are a cause of pilomatixoma (PTR) [MIM:132600]; a common benign skin

tumor.

Defects in CTNNB1 are a cause of medulloblastoma (MDB) [MIM:155255]. MDB is a malignant, invasive embryonal tumor of the cerebellum with a preferential manifestation in children.

Defects in CTNNB1 are a cause of susceptibility to ovarian cancer (OC) [MIM:167000]. Ovarian cancer common malignancy originating from ovarian tissue. Although many histologic types of ovarian neoplasms have been described, epithelial ovarian carcinoma is the most common form. Ovarian cancers are often asymptomatic and the recognized signs and symptoms, even of late-stage disease, are vague. Consequently, most patients are diagnosed with advanced disease. Note=A chromosomal aberration involving CTNNB1 is found in salivary gland pleiomorphic adenomas, the most common benign epithelial tumors of the salivary gland. Translocation t(3;8) (p21;q12) with PLAG1.

配列類似性

Belongs to the beta-catenin family.

Contains 12 ARM repeats.

翻訳後修飾

Phosphorylation by GSK3B requires prior phosphorylation of Ser-45 by another kinase.

Phosphorylation proceeds then from Thr-41 to Ser-37 and Ser-33.

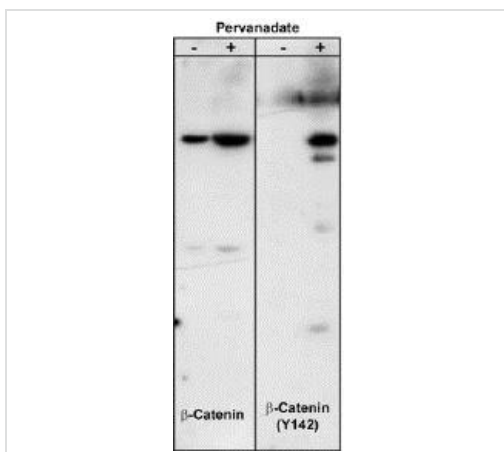
EGF stimulates tyrosine phosphorylation. Phosphorylation on Tyr-654 decreases CDH1 binding and enhances TBP binding.

Ubiquitinated by the SCF(BTRC) E3 ligase complex when phosphorylated by GSK3B, leading to its degradation. Ubiquitinated by a E3 ubiquitin ligase complex containing UBE2D1, SIAH1, CACYBP/SIP, SKP1, APC and TBL1X, leading to its subsequent proteasomal degradation.

細胞内局在

Cytoplasm. Nucleus. Cytoplasm > cytoskeleton. Cell junction > adherens junction. Cell junction. Cell membrane. Cytoplasmic when it is unstabilized (high level of phosphorylation) or bound to CDH1. Translocates to the nucleus when it is stabilized (low level of phosphorylation). Interaction with GLIS2 and MUC1 promotes nuclear translocation. Interaction with EMD inhibits nuclear localization.

画像



Western blot - Anti-beta Catenin (phospho Y142) antibody (ab27798)

Lanes 1-2 : Anti-beta Catenin (phospho Y142) antibody (ab27798)

Lanes 3-4 : Anti-beta Catenin (phospho Y142) antibody (ab27798) at 1/500 dilution

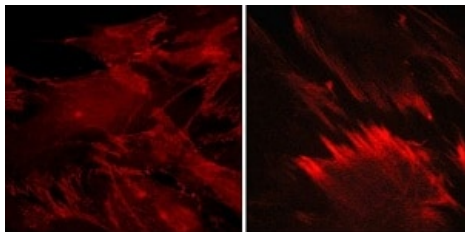
Lanes 1 & 3 : Hct116 src transformed cells serum starved overnight.

Lanes 2 & 4 : Hct116 src transformed cells treated with pervanadate (1 mM) for 30 min.

Lysates/proteins at 20 µg per lane.

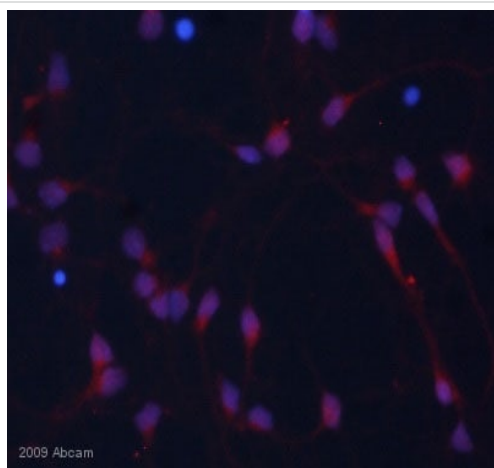
Predicted band size: 86 kDa

Membrane was incubated with diluted antibody in 5% non-fat milk, PBS, 0.04% Tween20 for 1 hour at room temperature.



Immunocytochemistry/ Immunofluorescence - Anti-beta Catenin (phospho Y142) antibody (ab27798)

ICC/IF labeling of phosphorylated β -Catenin in paraformaldehyde-fixed and NP-40-permeabilized rabbit spleen fibroblasts. The cells were labeled with mouse monoclonal β -Catenin (left panel) and ab27798 antibodies, then the antibodies were detected using appropriate secondary antibodies conjugated to Cy3.



Immunocytochemistry/ Immunofluorescence - Anti-beta Catenin (phospho Y142) antibody (ab27798)

Image courtesy of an Abreview submitted by Judit Herreros.

ab27798 staining beta Catenin (phospho Y142) in rat hippocampal neurons by Immunocytochemistry/ Immunofluorescence. The cells were pre-treated with pervanadate for 15 minutes before being fixed in paraformaldehyde and then blocked using 10% serum for 1 hour at 25°C. Samples were then incubated with primary antibody at 1/50 for 8 hours at 4°C. The secondary antibody used was a donkey anti-rabbit IgG conjugated to Alexa Fluor® 594 (red) **ab150076** used at a 1/500 dilution. Hoestch was used to stain the cell nuclei (blue).

Please note: All products are "FOR RESEARCH USE ONLY. NOT FOR USE IN DIAGNOSTIC PROCEDURES"

Our Abpromise to you: Quality guaranteed and expert technical support

- Replacement or refund for products not performing as stated on the datasheet
- Valid for 12 months from date of delivery
- Response to your inquiry within 24 hours

- We provide support in Chinese, English, French, German, Japanese and Spanish
- Extensive multi-media technical resources to help you
- We investigate all quality concerns to ensure our products perform to the highest standards

If the product does not perform as described on this datasheet, we will offer a refund or replacement. For full details of the Abpromise, please visit <https://www.abcam.co.jp/abpromise> or contact our technical team.

Terms and conditions

- Guarantee only valid for products bought direct from Abcam or one of our authorized distributors