

### Anti-beta Actin antibody [8F10-G10] ab170325

★★★★☆ [2 Abreviews](#) [14 References](#) [画像数 8](#)

#### 製品の概要

---

製品名	Anti-beta Actin antibody [8F10-G10]
製品の詳細	Mouse monoclonal [8F10-G10] to beta Actin
由来種	Mouse
アプリケーション	<b>適用あり:</b> WB
種交差性	<b>交差種:</b> Mouse, Rat, Rabbit, Goat, Human, Saccharomyces cerevisiae, Drosophila melanogaster, Zebrafish, African green monkey, Chinese hamster
免疫原	Recombinant fragment corresponding to Human beta Actin. Expressed in E.coli. Database link: <a href="#">P60709</a>
ポジティブ・コントロール	WB: COS7, K562, HeLa, 3T3 cell lysate.
特記事項	<p>This product was changed from ascites to tissue culture supernatant on 17.08.2018. Please note that the dilutions may need to be adjusted accordingly. If you have any questions, please do not hesitate to contact our scientific support team.</p> <p>The Life Science industry has been in the grips of a reproducibility crisis for a number of years. Abcam is leading the way in addressing this with our range of recombinant monoclonal antibodies and knockout edited cell lines for gold-standard validation. Please check that this product meets your needs before purchasing.</p> <p>If you have any questions, special requirements or concerns, please send us an inquiry and/or contact our Support team ahead of purchase. Recommended alternatives for this product can be found below, along with publications, customer reviews and Q&amp;As</p>

#### 製品の特性

---

製品の状態	Liquid
保存方法	Shipped at 4°C. Store at +4°C short term (1-2 weeks). Upon delivery aliquot. Store at -20°C long term. Avoid freeze / thaw cycle.
バッファー	pH: 7.40 Preservative: 0.03% Proclin 300 Constituent: 50% Glycerol
精製度	Concentrated Culture Supernatant
ポリ/モノ	モノクローナル
クローン名	8F10-G10

アプリケーション

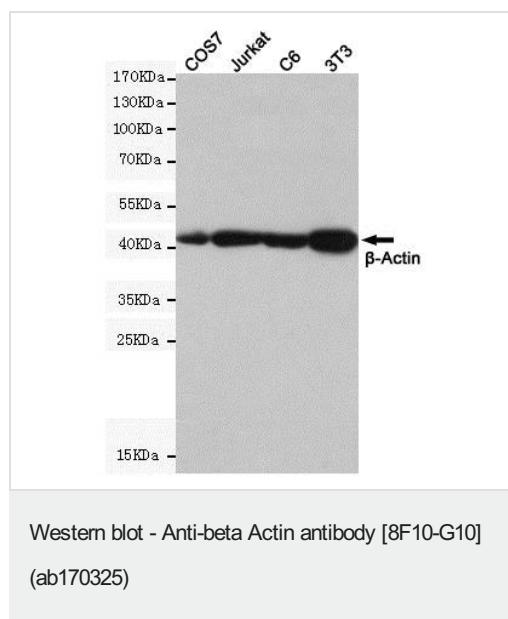
**The Abpromise guarantee** Abpromise保証は、次のテスト済みアプリケーションにおけるab170325の使用に適用されます  
 アプリケーションノートには、推奨の開始希釈率がありますが、適切な希釈率につきましてはご検討ください。

アプリケーション	Abreviews	特記事項
WB	★★★★★ (2)	1/5000. Predicted molecular weight: 42 kDa.

ターゲット情報

<b>機能</b>	Actins are highly conserved proteins that are involved in various types of cell motility and are ubiquitously expressed in all eukaryotic cells.
<b>関連疾患</b>	Defects in ACTB are a cause of dystonia juvenile-onset (DYTJ) [MIM:607371]. DYTJ is a form of dystonia with juvenile onset. Dystonia is defined by the presence of sustained involuntary muscle contraction, often leading to abnormal postures. DYTJ patients manifest progressive, generalized, dopa-unresponsive dystonia, developmental malformations and sensory hearing loss.
<b>配列類似性</b>	Belongs to the actin family.
<b>翻訳後修飾</b>	ISGylated.
<b>細胞内局在</b>	Cytoplasm > cytoskeleton. Localized in cytoplasmic mRNP granules containing untranslated mRNAs.

画像



**All lanes** : Anti-beta Actin antibody [8F10-G10] (ab170325) at 1/5000 dilution

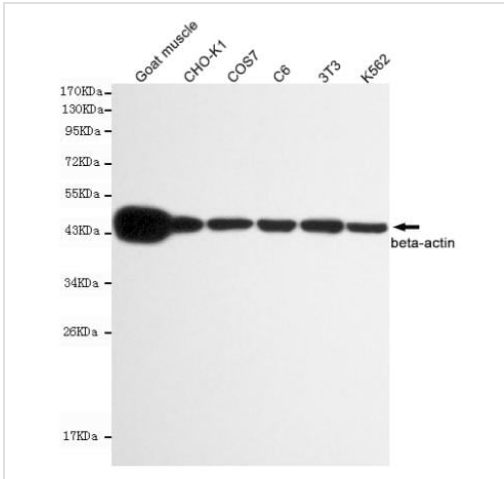
**Lane 1** : COS7 cell lysate

**Lane 2** : Jurkat cell lysate

**Lane 3** : C6 cell lysate

**Lane 4** : 3T3 cell lysate

**Predicted band size:** 42 kDa



Western blot - Anti-beta Actin antibody [8F10-G10] (ab170325)

**All lanes :** Anti-beta Actin antibody [8F10-G10] (ab170325) at 1/10000 dilution

**Lane 1 :** Goat muscle cell lysate

**Lane 2 :** CHO-K1 cell lysate

**Lane 3 :** COS7 cell lysate

**Lane 4 :** C6 cell lysate

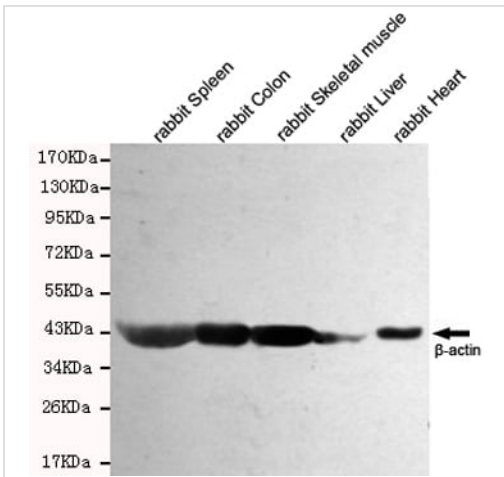
**Lane 5 :** 3T3 cell lysate

**Lane 6 :** K562 cell lysate

**Predicted band size:** 42 kDa

**Observed band size:** 45 kDa

This image was produced with antibody produced in ascites.



Western blot - Anti-beta Actin antibody [8F10-G10] (ab170325)

**All lanes :**

**Lane 1 :** Rabbit spleen cell lysate

**Lane 2 :** Rabbit colon cell lysate

**Lane 3 :** Rabbit skeletal muscle cell lysate

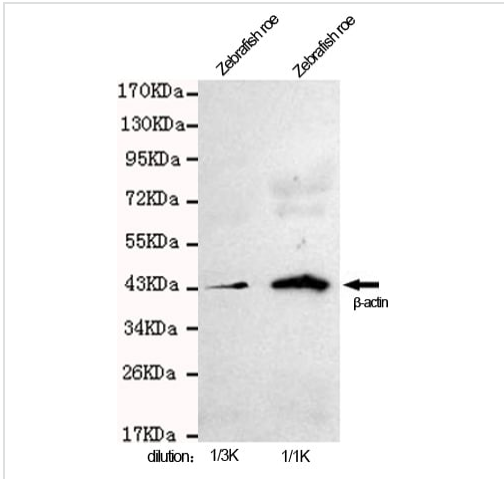
**Lane 4 :** Rabbit liver cell lysate

**Lane 5 :** Rabbit heart cell lysate

**Predicted band size:** 42 kDa

**Observed band size:** 45 kDa

This image was produced with antibody produced in ascites.



Western blot - Anti-beta Actin antibody [8F10-G10] (ab170325)

**Lane 1** : Anti-beta Actin antibody [8F10-G10] (ab170325) at 1/3000 dilution

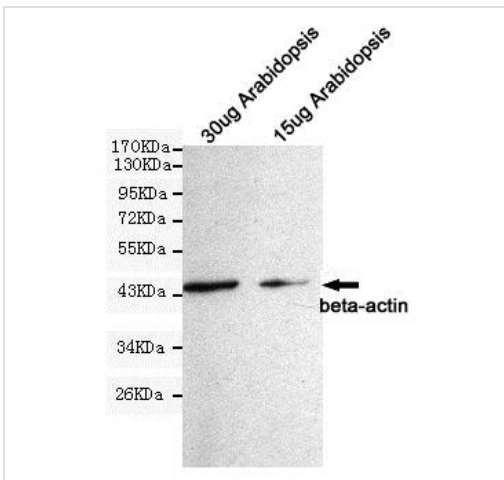
**Lane 2** : Anti-beta Actin antibody [8F10-G10] (ab170325) at 1/1000 dilution

**All lanes** : Zebrafish roe cell lysate

**Predicted band size:** 42 kDa

**Observed band size:** 45 kDa

This image was produced with antibody produced in ascites.



Western blot - Anti-beta Actin antibody [8F10-G10] (ab170325)

**All lanes** : Anti-beta Actin antibody [8F10-G10] (ab170325) at 1/1000 dilution

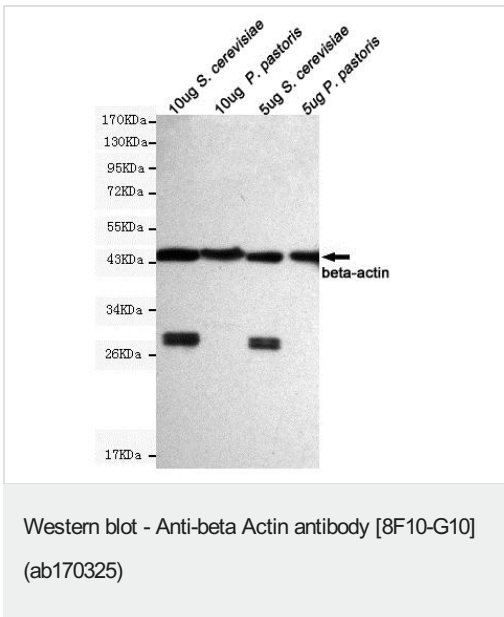
**Lane 1** : Arabidopsis cell lysate at 30  $\mu$ g

**Lane 2** : Arabidopsis cell lysate at 15  $\mu$ g

**Predicted band size:** 42 kDa

**Observed band size:** 45 kDa

This image was produced with antibody produced in ascites.



**All lanes :** Anti-beta Actin antibody [8F10-G10] (ab170325) at 1/5000 dilution

**Lane 1 :** *S. cerevisiae* cell lysate at 10 µg

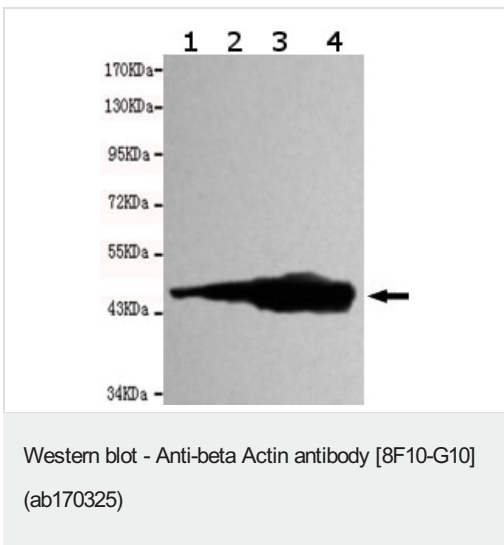
**Lane 2 :** *P. pastoris* cell lysate at 10 µg

**Lane 3 :** *S. cerevisiae* cell lysate at 5 µg

**Lane 4 :** *P. pastoris* cell lysate at 5 µg

**Predicted band size:** 42 kDa

**Observed band size:** 45 kDa



**All lanes :**

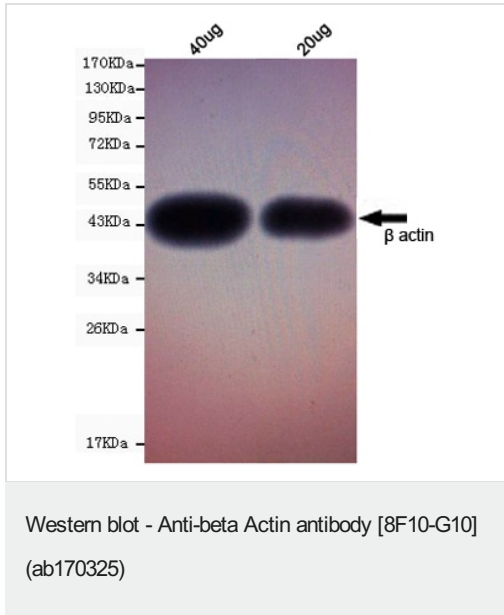
**Lane 1 :** COS7 cell lysate

**Lane 2 :** 3T3 cell lysate

**Lane 3 :** k562 cell lysate

**Lane 4 :** HeLa cell lysate

**Predicted band size:** 42 kDa



**All lanes** : Anti-beta Actin antibody [8F10-G10] (ab170325) at 1/3000 dilution

**Lane 1** : Drosophila melanogaster cell lysate at 40  $\mu$ g

**Lane 2** : Drosophila melanogaster cell lysate at 20  $\mu$ g

**Predicted band size:** 42 kDa

**Observed band size:** 45 kDa

**Please note:** All products are "FOR RESEARCH USE ONLY. NOT FOR USE IN DIAGNOSTIC PROCEDURES"

### Our Abpromise to you: Quality guaranteed and expert technical support

- Replacement or refund for products not performing as stated on the datasheet
- Valid for 12 months from date of delivery
- Response to your inquiry within 24 hours
- We provide support in Chinese, English, French, German, Japanese and Spanish
- Extensive multi-media technical resources to help you
- We investigate all quality concerns to ensure our products perform to the highest standards

If the product does not perform as described on this datasheet, we will offer a refund or replacement. For full details of the Abpromise, please visit <https://www.abcam.co.jp/abpromise> or contact our technical team.

### Terms and conditions

- Guarantee only valid for products bought direct from Abcam or one of our authorized distributors