




Anti-beta 3 Adrenergic Receptor antibody ab77588

2 References [画像数 1](#)

製品の概要

製品名	Anti-beta 3 Adrenergic Receptor antibody
製品の詳細	Goat polyclonal to beta 3 Adrenergic Receptor
由来種	Goat
アプリケーション	適用あり: WB
種交差性	交差種: Human 交差が予測される動物種: Chimpanzee 
免疫原	Synthetic peptide: PHENSSLAPWPD-C , corresponding to N terminal amino acids 5-16 of human beta 3 Adrenergic Receptor (NP_000016.1) <div>  Run BLAST with  Run BLAST with </div>
ポジティブ・コントロール	Human brain (cerebellum, cerebral cortex, frontal cortex) lysates.
特記事項	<p>The Life Science industry has been in the grips of a reproducibility crisis for a number of years. Abcam is leading the way in addressing this with our range of recombinant monoclonal antibodies and knockout edited cell lines for gold-standard validation. Please check that this product meets your needs before purchasing.</p> <p>If you have any questions, special requirements or concerns, please send us an inquiry and/or contact our Support team ahead of purchase. Recommended alternatives for this product can be found below, along with publications, customer reviews and Q&As</p>

製品の特性

製品の状態	Liquid
保存方法	Shipped at 4°C. Upon delivery aliquot and store at -20°C. Avoid repeated freeze / thaw cycles.
バッファー	pH: 7.30 Preservative: 0.02% Sodium azide Constituents: 0.5% BSA, 0.5% Tris buffered saline
精製度	Immunogen affinity purified
特記事項 (精製)	ab77588 is purified from goat serum by ammonium sulphate precipitation followed by antigen affinity chromatography using the immunizing peptide.

ポリモノ
アイソタイプ

ポリクローナル
IgG

アプリケーション

The Abpromise guarantee Abpromise保証は、 次のテスト済みアプリケーションにおけるab77588の使用に適用されます
アプリケーションノートには、推奨の開始希釈率がありますが、適切な希釈率につきましてはご確認ください。

アプリケーション	Abreviews	特記事項
WB		

追加情報

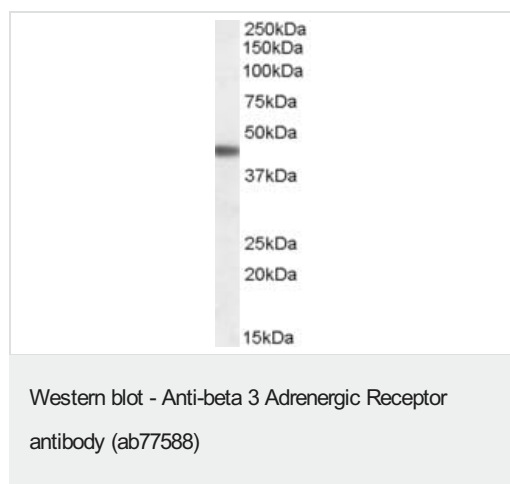
Peptide ELISA: Antibody detection limit dilution 1/128000.
WB: Use at a concentration of 0.03 - 0.1 µg/ml. Detects a band of approximately 45 kDa (predicted molecular weight: 45 kDa).

Not yet tested in other applications.
Optimal dilutions/concentrations should be determined by the end user.

ターゲット情報

機能	Beta-adrenergic receptors mediate the catecholamine-induced activation of adenylate cyclase through the action of G proteins. Beta-3 is involved in the regulation of lipolysis and thermogenesis.
組織特異性	Expressed mainly in adipose tissues.
配列類似性	Belongs to the G-protein coupled receptor 1 family. Adrenergic receptor subfamily. ADRB3 sub-subfamily.
細胞内局在	Cell membrane.

画像



Anti-beta 3 Adrenergic Receptor antibody (ab77588) at 0.03 µg/ml
+ human brain (cerebral cortex) lysate (in RIPA buffer) at 35 µg

Predicted band size: 45 kDa
Observed band size: 45 kDa

Primary incubation was 1 hour.

Our Abpromise to you: Quality guaranteed and expert technical support

- Replacement or refund for products not performing as stated on the datasheet
- Valid for 12 months from date of delivery
- Response to your inquiry within 24 hours

- We provide support in Chinese, English, French, German, Japanese and Spanish
- Extensive multi-media technical resources to help you
- We investigate all quality concerns to ensure our products perform to the highest standards

If the product does not perform as described on this datasheet, we will offer a refund or replacement. For full details of the Abpromise, please visit <https://www.abcam.co.jp/abpromise> or contact our technical team.

Terms and conditions

- Guarantee only valid for products bought direct from Abcam or one of our authorized distributors