


Anti-beta 1 Adrenergic Receptor antibody ab85037

★★★★☆ [4 Abreviews](#) [4 References](#) [画像数 2](#)

製品の概要

製品名	Anti-beta 1 Adrenergic Receptor antibody
製品の詳細	Rabbit polyclonal to beta 1 Adrenergic Receptor
由来種	Rabbit
特異性	From Jan 2024, QC testing of replenishment batches of this polyclonal changed. All tested and expected application and reactive species combinations are still covered by our Abcam product promise. However, we no longer test all applications. For more information on a specific batch, please contact our Scientific Support who will be happy to help.
アプリケーション	適用あり: ICC/IF, WB
種交差性	交差種: Mouse, Human 交差が予測される動物種: Sheep, Cow, Cat, Pig 
免疫原	Synthetic peptide corresponding to Mouse beta 1 Adrenergic Receptor aa 150-250 conjugated to keyhole limpet haemocyanin. (Peptide available as ab97424)
ポジティブ・コントロール	This antibody gave a positive signal in Mouse Spinal cord tissue lysate. ICC/IF: THP-1 cells
特記事項	The Life Science industry has been in the grips of a reproducibility crisis for a number of years. Abcam is leading the way in addressing this with our range of recombinant monoclonal antibodies and knockout edited cell lines for gold-standard validation. Please check that this product meets your needs before purchasing. If you have any questions, special requirements or concerns, please send us an inquiry and/or contact our Support team ahead of purchase. Recommended alternatives for this product can be found below, along with publications, customer reviews and Q&As

製品の特性

製品の状態	Liquid
保存方法	Shipped at 4°C. Store at +4°C short term (1-2 weeks). Upon delivery aliquot. Store at -20°C or -80°C. Avoid freeze / thaw cycle.
バッファー	pH: 7.40 Preservative: 0.02% Sodium azide Constituent: PBS

Batches of this product that have a concentration < 1mg/ml may have BSA added as a stabilising agent. If you would like information about the formulation of a specific lot, please contact our scientific support team who will be happy to help.

精製度	Immunogen affinity purified
ポリ/モノ	ポリクローナル
アイソタイプ	IgG

アプリケーション

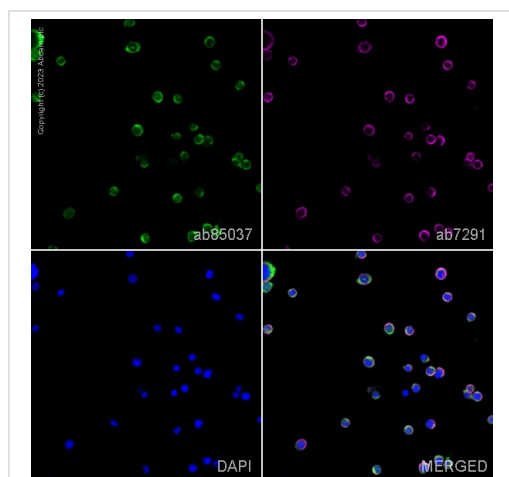
The Abpromise guarantee **Abpromise保証は、** 次のテスト済みアプリケーションにおけるab85037の使用に適用されます
アプリケーションノートには、推奨の開始希釈率がありますが、適切な希釈率につきましてはご検討ください。

アプリケーション	Abreviews	特記事項
ICC/IF	★★★★☆ (1)	Use a concentration of 5 µg/ml.
WB	★★★★☆ (2)	Use a concentration of 1 µg/ml. Detects a band of approximately 55 kDa (predicted molecular weight: 51 kDa).

ターゲット情報

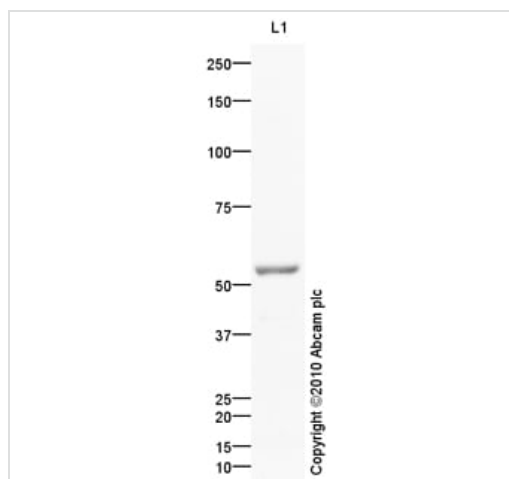
機能	Beta-adrenergic receptors mediate the catecholamine-induced activation of adenylate cyclase through the action of G proteins. This receptor binds epinephrine and norepinephrine with approximately equal affinity.
配列類似性	Belongs to the G-protein coupled receptor 1 family. Adrenergic receptor subfamily. ADRB1 subfamily.
ドメイン	The PDZ domain-binding motif mediates competitive interactions with GOPC, MAGI3 and DLG4 and plays a role in subcellular location of the receptor.
翻訳後修飾	Homologous desensitization of the receptor is mediated by its phosphorylation by beta-adrenergic receptor kinase.
細胞内局在	Cell membrane. Localized at the plasma membrane. Found in the Golgi upon GOPC overexpression.

画像



Immunocytochemistry/ Immunofluorescence - Anti-beta 1 Adrenergic Receptor antibody (ab85037)

ab85037 staining beta 1 Adrenergic Receptor in THP-1 cells. The cells were fixed with 100% methanol (5 min), permeabilized with 0.1% PBS-Tween for 5 minutes and then blocked with 1% BSA/10% normal goat serum/0.3M glycine in 0.1%PBS-Tween for 1h. The cells were then incubated overnight at 4°C with ab85037 at 5µg/ml and **ab7291**, Mouse monoclonal [DM1A] to alpha Tubulin - Loading Control. Cells were then incubated with **ab150081**, Goat polyclonal Secondary Antibody to Rabbit IgG - H&L (Alexa Fluor® 488), pre-adsorbed at 1/1000 dilution (shown in green) and **ab150120**, Goat polyclonal Secondary Antibody to Mouse IgG - H&L (Alexa Fluor® 594), pre-adsorbed at 1/1000 dilution (shown in pseudocolour magenta). Nuclear DNA was labelled with DAPI (shown in blue). Image was acquired with a confocal microscope (Leica-Microsystems TCS SP8) and a single confocal section is shown.



Western blot - Anti-beta 1 Adrenergic Receptor antibody (ab85037)

Anti-beta 1 Adrenergic Receptor antibody (ab85037) at 1 µg/ml + Spinal Cord (Mouse) Tissue Lysate at 10 µg

Secondary

Goat polyclonal to Rabbit IgG - H&L - Pre-Adsorbed at 1/3000 dilution

Developed using the ECL technique.

Performed under reducing conditions.

Predicted band size: 51 kDa

Observed band size: 55 kDa

Exposure time: 20 minutes

Mouse Beta-1 adrenergic receptor contains a potential

glycosylation site (SwissProt) which may explain its migration at a higher molecular weight than predicted.

Please note: All products are "FOR RESEARCH USE ONLY. NOT FOR USE IN DIAGNOSTIC PROCEDURES"

Our Abpromise to you: Quality guaranteed and expert technical support

- Replacement or refund for products not performing as stated on the datasheet
- Valid for 12 months from date of delivery
- Response to your inquiry within 24 hours
- We provide support in Chinese, English, French, German, Japanese and Spanish
- Extensive multi-media technical resources to help you
- We investigate all quality concerns to ensure our products perform to the highest standards

If the product does not perform as described on this datasheet, we will offer a refund or replacement. For full details of the Abpromise, please visit <https://www.abcam.co.jp/abpromise> or contact our technical team.

Terms and conditions

- Guarantee only valid for products bought direct from Abcam or one of our authorized distributors