

Anti-Beclin 1 antibody [OTI4A10] ab118148

KO 評価済

1 References 画像数 3

製品の概要

製品名	Anti-Beclin 1 antibody [OTI4A10]
製品の詳細	Mouse monoclonal [OTI4A10] to Beclin 1
由来種	Mouse
アプリケーション	適用あり: WB 適用なし: Flow Cyt or ICC/IF
種交差性	交差種: Human
免疫原	Recombinant full length protein corresponding to Human Beclin 1. Produced in HEK-293T cells. NP_003757 Database link: Q14457
ポジティブ・コントロール	WB: Beclin 1 transfected HEK-293T cell lysate; HeLa cell lysate.
特記事項	The clone number has been updated from 4A10 to OTI4A10, both clone numbers name the same clone. The Life Science industry has been in the grips of a reproducibility crisis for a number of years. Abcam is leading the way in addressing this with our range of recombinant monoclonal antibodies and knockout edited cell lines for gold-standard validation. Please check that this product meets your needs before purchasing. If you have any questions, special requirements or concerns, please send us an inquiry and/or contact our Support team ahead of purchase. Recommended alternatives for this product can be found below, along with publications, customer reviews and Q&As

製品の特性

製品の状態	Liquid
保存方法	Shipped at 4°C. Store at +4°C short term (1-2 weeks). Upon delivery aliquot. Store at -20°C. Avoid freeze / thaw cycle.
バッファー	pH: 7.30 Preservative: 0.02% Sodium azide Constituents: PBS, 1% BSA, 50% Glycerol
精製度	Affinity purified

特記事項(精製)	Purified from cell culture supernatant by affinity chromatography
ポリ/モノ	モノクローナル
クローン名	OT4A10
アイソタイプ	IgG2a

アプリケーション

The Abpromise guarantee Abpromise保証は、次のテスト済みアプリケーションにおけるab118148の使用に適用されます
アプリケーションノートには、推奨の開始希釈率がありますが、適切な希釈率につきましてはご確認ください。

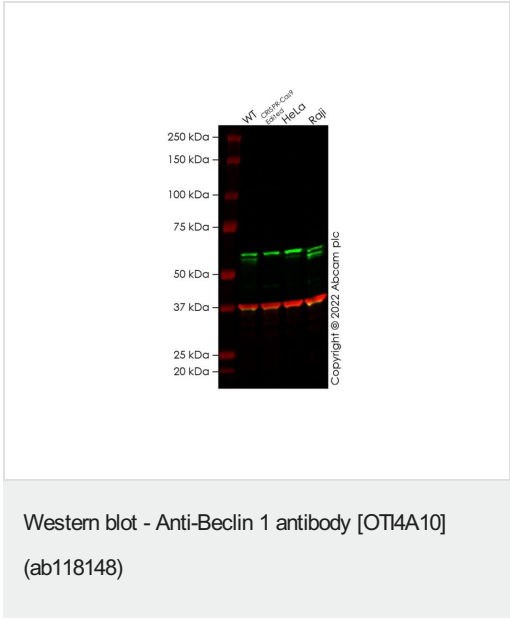
アプリケーション	Abreviews	特記事項
WB		1/2000. Predicted molecular weight: 52 kDa.

追加情報 Is unsuitable for Flow Cyt or ICC/IF.

ターゲット情報

機能	Plays a central role in autophagy (By similarity). May play a role in antiviral host defense. Protects against infection by a neurovirulent strain of Sindbis virus.
組織特異性	Ubiquitous.
配列類似性	Belongs to the beclin family.
細胞内局在	Golgi apparatus > trans-Golgi network membrane. Interaction with ATG14 promotes translocation to autophagosomes. Expressed in dendrites and cell bodies of cerebellar Purkinje cells.

画像



All lanes : Anti-Beclin 1 antibody [OT4A10] (ab118148) at 1/2000 dilution

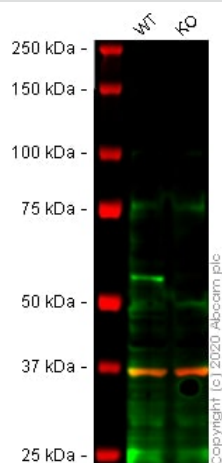
Lane 1 : Wild-type Jurkat cell lysate
Lane 2 : BECN1 CRISPR-Cas9 edited Jurkat cell lysate
Lane 3 : HeLa cell lysate
Lane 4 : Raji cell lysate

Lysates/proteins at 20 µg per lane.

Performed under reducing conditions.

Predicted band size: 52 kDa
Observed band size: 52 kDa

False colour image of Western blot: Anti-Beclin 1 antibody [OT4A10] staining at 1/2000 dilution, shown in green; Rabbit Anti-GAPDH antibody [EPR16891] ([ab181602](#)) loading control staining at 1/20000 dilution, shown in red. In Western blot, ab118148 was shown to bind specifically to Beclin 1. A band was observed at 52 kDa in wild-type Jurkat cell lysates with no signal observed at this size in BECN1 CRISPR-Cas9 edited cell line [ab283778](#) (BECN1 CRISPR-Cas9 edited cell lysate [ab283792](#)). The band observed in the CRISPR-Cas9 edited lysate lane above 52 kDa is likely to represent Beclin 1 with an insertion. This has not been investigated further and the functional properties of the gene product have not been determined. To generate this image, wild-type and BECN1 CRISPR-Cas9 edited Jurkat cell lysates were analysed. First, samples were run on an SDS-PAGE gel then transferred onto a nitrocellulose membrane. Membranes were blocked in 3 % milk in TBS-0.1 % Tween[®] 20 (TBS-T) before incubation with primary antibodies overnight at 4 °C. Blots were washed four times in TBS-T, incubated with secondary antibodies for 1 h at room temperature, washed again four times then imaged. Secondary antibodies used were Goat anti-Mouse IgG H&L 800CW and Goat anti-Rabbit IgG H&L 680RD at 1/20000 dilution.



Western blot - Anti-Beclin 1 antibody [OT4A10] (ab118148)

All lanes : Anti-Beclin 1 antibody [OT4A10] (ab118148) at 1/1000 dilution

Lane 1 : Wild-type HeLa (Human epithelial cell line from cervix adenocarcinoma) whole cell lysate

Lane 2 : BECN1 knockout HeLa (Human epithelial cell line from cervix adenocarcinoma) whole cell lysate

Lysates/proteins at 20 µg per lane.

Performed under reducing conditions.

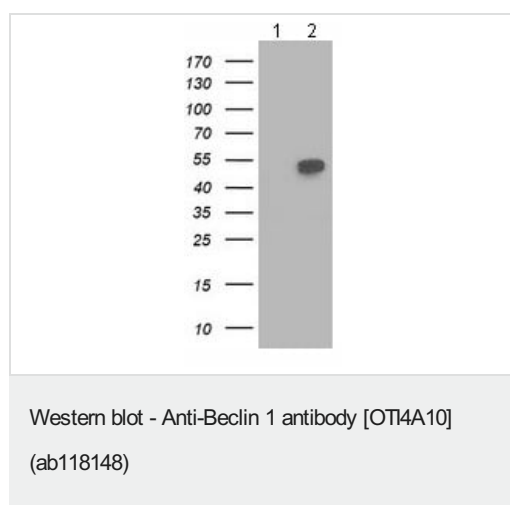
Predicted band size: 52 kDa

Observed band size: 60 kDa

Lanes 1 - 2: Merged signal (red and green). Green - ab118148 observed at 60 kDa. Red - loading control, [ab181602](#) (Rabbit Anti-GAPDH antibody [EPR16891]) observed at 37kDa.

ab118148 was shown to react with Beclin 1 in wild-type HeLa cells

in western blot. Loss of signal was observed when BECN1 knockout sample was used. Wild-type HeLa and BECN1 knockout cell lysates were subjected to SDS-PAGE. Membranes were blocked in non-mammalian (TBS-based) blocking solution before incubation with ab118148 and **ab181602** (Rabbit Anti-GAPDH antibody [EPR16891]) overnight at 4°C at a 1 in 1000 dilution and a 1 in 20000 dilution respectively. Blots were incubated with Goat anti-Rabbit IgG H&L (IRDye® 800CW) preabsorbed (**ab216773**) and Goat anti-Mouse IgG H&L (IRDye® 680RD) preabsorbed (**ab216776**) secondary antibodies at 1 in 20000 dilution for 1 hour at room temperature before imaging.



All lanes : Anti-Beclin 1 antibody [OT14A10] (ab118148) at 1/2000 dilution

Lane 1 : HEK-293T (Human epithelial cell line from embryonic kidney transformed with large T antigen) cells transfected with pCMV6-ENTRY control

Lane 2 : HEK-293T cells transfected with pCMV6-ENTRY Beclin 1

Lysates/proteins at 5 µg per lane.

Predicted band size: 52 kDa

Please note: All products are "FOR RESEARCH USE ONLY. NOT FOR USE IN DIAGNOSTIC PROCEDURES"

Our Abpromise to you: Quality guaranteed and expert technical support

- Replacement or refund for products not performing as stated on the datasheet
- Valid for 12 months from date of delivery
- Response to your inquiry within 24 hours
- We provide support in Chinese, English, French, German, Japanese and Spanish
- Extensive multi-media technical resources to help you
- We investigate all quality concerns to ensure our products perform to the highest standards

If the product does not perform as described on this datasheet, we will offer a refund or replacement. For full details of the Abpromise, please visit <https://www.abcam.co.jp/abpromise> or contact our technical team.

Terms and conditions

- Guarantee only valid for products bought direct from Abcam or one of our authorized distributors