

Anti-Beclin 1 antibody ab62557

★★★★★ **7 Abreviews** **266 References** 画像数 9

製品の概要

製品名	Anti-Beclin 1 antibody
製品の詳細	Rabbit polyclonal to Beclin 1
由来種	Rabbit
アプリケーション	適用あり: IHC-P, WB, ICC/IF
種交差性	交差種: Mouse, Rat, Human
免疫原	Synthetic peptide corresponding to Human Beclin 1 (N terminal). ab62557 was raised against a 17 amino acid synthetic peptide from near the amino terminus of human Beclin-1. The immunogen is located within amino acids 40 - 90 of Beclin-1. Database link: Q14457
ポジティブ・コントロール	WB: HEK-293, A549, HeLa, HepG2, K562, MCF7 and SK-N-SH cell lines. Mouse heart, brain and colon tissue. Rat liver, lung, brain and colon tissue. IHC-P: Human brain tissue, mouse kidney and rat liver and spleen tissues. IF: Mouse brain. ICC/IF: HeLa cells.
特記事項	For Western blot protocol see the applications section. For information on sample preparation for western blot, please refer here . The Life Science industry has been in the grips of a reproducibility crisis for a number of years. Abcam is leading the way in addressing this with our range of recombinant monoclonal antibodies and knockout edited cell lines for gold-standard validation. Please check that this product meets your needs before purchasing. If you have any questions, special requirements or concerns, please send us an inquiry and/or contact our Support team ahead of purchase. Recommended alternatives for this product can be found below, along with publications, customer reviews and Q&As

製品の特性

製品の状態	Liquid
保存方法	Shipped at 4°C. Store at +4°C.
バッファー	pH: 7.2 Preservative: 0.02% Sodium azide Constituent: PBS
精製度	Immunogen affinity purified
ポリ/モノ	ポリクローナル

アプリケーション

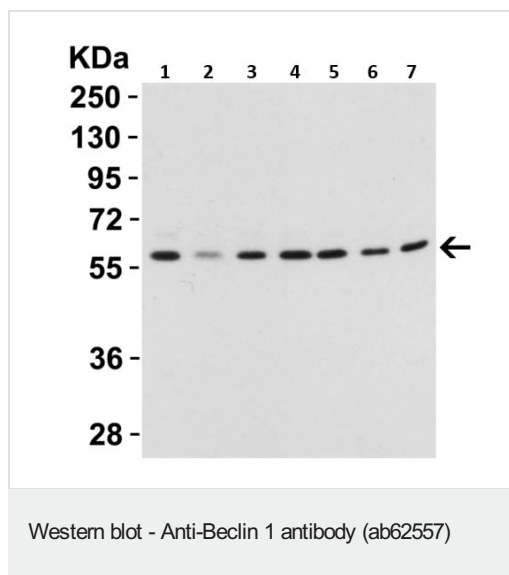
The Abpromise guarantee Abpromise保証は、次のテスト済みアプリケーションにおけるab62557の使用に適用されます
アプリケーションノートには、推奨の開始希釈率がありますが、適切な希釈率につきましてはご確認ください。

アプリケーション	Abreviews	特記事項
IHC-P	★★★★★ (2)	Use a concentration of 2 µg/ml.
WB	★★★★★ (4)	Use a concentration of 0.5 - 2 µg/ml. Detects a band of approximately 52 kDa (predicted molecular weight: 52 kDa). After transfer, wash membrane in TBST. Incubate membrane with 5% non-fat dry milk in TBS, 4C, overnight.. Dilute ab62557 to recommended dilution in 10mL of blocking buffer. Incubate membrane with ab62557 for 1 h at room temperature. Wash 3 times x 10 min in washing buffer with gentle
IF		Use a concentration of 20 µg/ml.
ICC/IF	★★★★★ (1)	1/100.

ターゲット情報

機能	Plays a central role in autophagy (By similarity). May play a role in antiviral host defense. Protects against infection by a neurovirulent strain of Sindbis virus.
組織特異性	Ubiquitous.
配列類似性	Belongs to the beclin family.
細胞内局在	Golgi apparatus > trans-Golgi network membrane. Interaction with ATG14 promotes translocation to autophagosomes. Expressed in dendrites and cell bodies of cerebellar Purkinje cells.

画像



All lanes : Anti-Beclin 1 antibody (ab62557) at 1 µg/ml

Lane 1 : 293 human cell line

Lane 2 : A549 human cell line

Lane 3 : HeLa cell line

Lane 4 : HepG2 cell line

Lane 5 : K562 cell line

Lane 6 : MCF7 cell line

Lane 7 : SK-N-SH cell line

Lysates/proteins at 15 µg per lane.

Secondary

All lanes : Rabbit IgG antibody (HRP) at 1/1000 dilution

Predicted band size: 52 kDa

Gel: 10%

Running condition: 130V, 1.5hrs

Transfer condition: Wet, 250mA, 2 hrs (NC membrane)

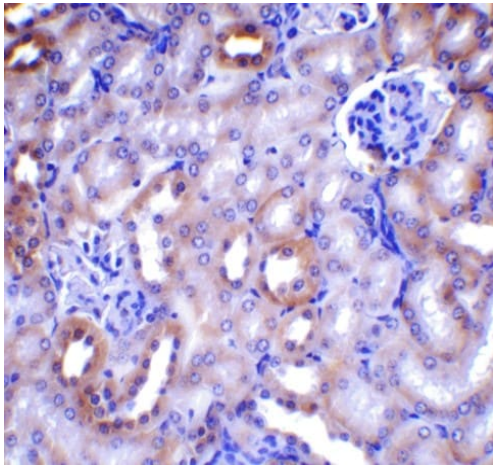
Blocking condition: 5% non-fat milk in TBS at 4 overnight

Primary antibody incubation: RT, 1hr

Secondary antibody incubation: RT, 1hr

Washing condition: 5 ml TBST, 4 x 5min

Exposure system: GE ECL 10 sec

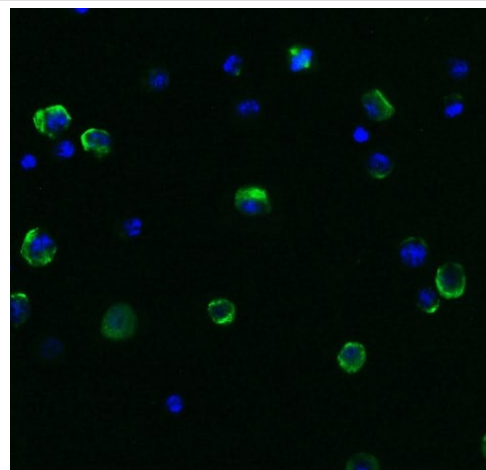


Immunohistochemistry (Formalin/PFA-fixed paraffin-embedded sections) - Anti-Beclin 1 antibody (ab62557)

Immunohistochemistry (Formalin/PFA-fixed paraffin-embedded sections) analysis of mouse kidney tissue labelling Beclin 1 with **ab6257** at 1 µg/mL. Heat mediated antigen retrieval was performed using citrate buffer, pH 6.0, microwave, for 20min. Streptavidin-HRP Kit (Rabbit IgG) was used as the secondary antibody.

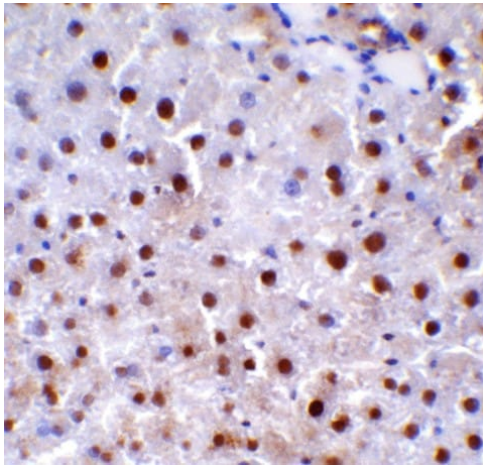
blocking condition: 5% BSA at Room Temperature for 1 hour

Chromagen system: DAB



Immunocytochemistry/ Immunofluorescence - Anti-Beclin 1 antibody (ab62557)

Immunofluorescence analysis of HeLa cells labelling Beclin 1 with ab62557 at 1/100 dilution. Cells were fixed with 4% paraformaldehyde at room temperature for 15 minutes and was permeabilized with 0.1% Triton X-100 at room temperature for 4 minutes. Rabbit IgG antibody (Alexa Fluor 488) at 1/2000 was used as the secondary antibody (green). Nuclear DNA was labelled with DAPI (blue).

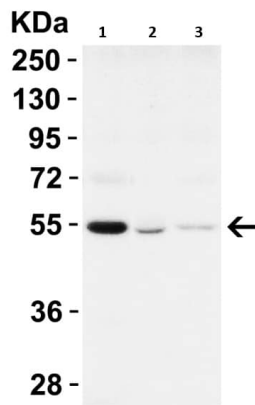


Immunohistochemistry (Formalin/PFA-fixed paraffin-embedded sections) - Anti-Beclin 1 antibody (ab62557)

Immunohistochemistry (Formalin/PFA-fixed paraffin-embedded sections) analysis of rat liver tissue labelling Beclin 1 with **ab6257** at 1 µg/mL. Heat mediated antigen retrieval was performed using citrate buffer, pH 6.0, microwave, for 20min. Streptavidin-HRP Kit (Rabbit IgG) was used as the secondary antibody.

blocking condition: 5% BSA at Room Temperature for 1 hour

Chromagen system: DAB



Western blot - Anti-Beclin 1 antibody (ab62557)

All lanes : Anti-Beclin 1 antibody (ab62557) at 1 µg/ml

Lane 1 : Mouse heart tissue

Lane 2 : Mouse brain tissue

Lane 3 : Mouse colon tissue

Lysates/proteins at 15 µg per lane.

Secondary

All lanes : Rabbit IgG antibody (HRP) at 1/10000 dilution

Predicted band size: 52 kDa

Gel: 10%

Running condition: 130V, 1.5hrs

Transfer condition: Wet, 250mA, 2 hrs (NC membrane)

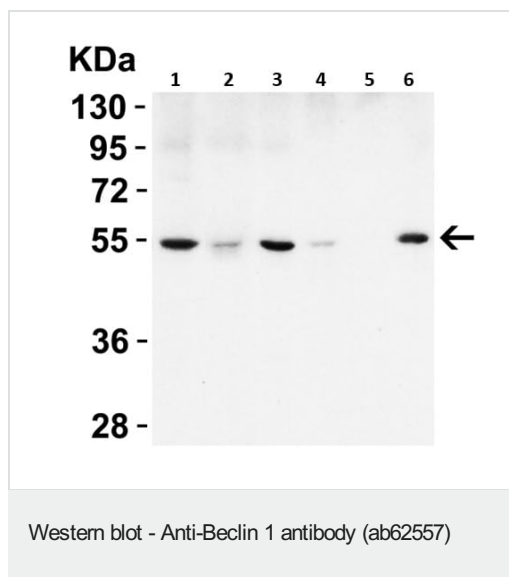
Blocking condition: 5% non-fat milk in TBS at 4 overnight

Primary antibody incubation: RT, 1hr

Secondary antibody incubation: RT, 1hr

Washing condition: 5 ml TBST, 4 x 5min

Exposure system: GE ECL 10 sec



All lanes : Anti-Beclin 1 antibody (ab62557) at 1 μ g

Lane 1 : Rat liver tissue

Lane 2 : Rat heart tissue

Lane 3 : Rat lung tissue

Lane 4 : Rat brain tissue

Lane 5 : Rat ovary tissue

Lane 6 : Rat colon tissue

Lysates/proteins at 15 μ g per lane.

Secondary

All lanes : Rabbit IgG antibody (HRP) at 1/10000 dilution

Predicted band size: 52 kDa

Gel: 10%

Running condition: 130V, 1.5hrs

Transfer condition: Wet, 250mA, 2 hrs (NC membrane)

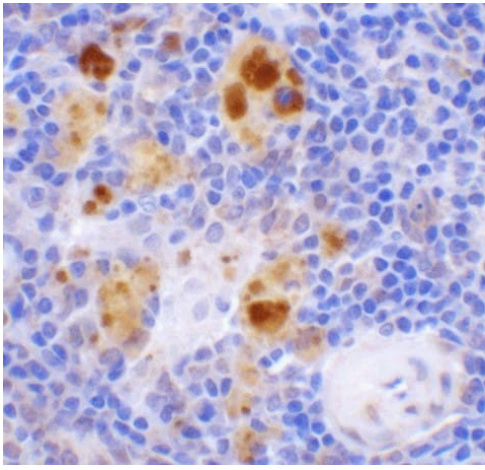
Blocking condition: 5% non-fat milk in TBS at 4 overnight

Primary antibody incubation: RT, 1hr

Secondary antibody incubation: RT, 1hr

Washing condition: 5 ml TBST, 4 x 5min

Exposure system: GE ECL 10 sec

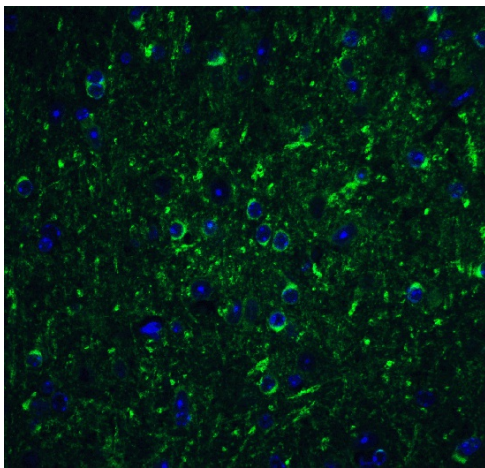


Immunohistochemistry (Formalin/PFA-fixed paraffin-embedded sections) - Anti-Beclin 1 antibody (ab62557)

Immunohistochemistry (Formalin/PFA-fixed paraffin-embedded sections) analysis of rat spleen tissue labelling Beclin 1 with **ab6257** at 1 µg/mL. Heat mediated antigen retrieval was performed using citrate buffer, pH 6.0, microwave, for 20min. Streptavidin-HRP Kit (Rabbit IgG) was used as the secondary antibody.

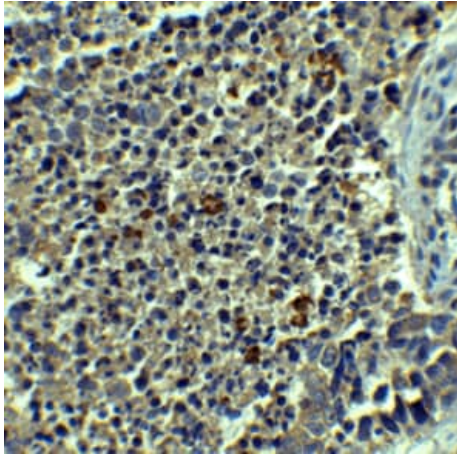
blocking condition: 5% BSA at Room Temperature for 1 hour

Chromagen system: DAB



Immunofluorescence - Anti-Beclin 1 antibody (ab62557)

ab62557 at 20 µg/mL staining Beclin 1 (green) in mouse brain tissue by Immunofluorescence. DAPI staining in blue.



Paraffin-embedded human brain tissue stained for Beclin 1 using ab62557 at 2.5 µg/ml in immunohistochemical analysis.

Immunohistochemistry (Formalin/PFA-fixed paraffin-embedded sections) - Anti-Beclin 1 antibody (ab62557)

Please note: All products are "FOR RESEARCH USE ONLY. NOT FOR USE IN DIAGNOSTIC PROCEDURES"

Our Abpromise to you: Quality guaranteed and expert technical support

- Replacement or refund for products not performing as stated on the datasheet
- Valid for 12 months from date of delivery
- Response to your inquiry within 24 hours
- We provide support in Chinese, English, French, German, Japanese and Spanish
- Extensive multi-media technical resources to help you
- We investigate all quality concerns to ensure our products perform to the highest standards

If the product does not perform as described on this datasheet, we will offer a refund or replacement. For full details of the Abpromise, please visit <https://www.abcam.co.jp/abpromise> or contact our technical team.

Terms and conditions

- Guarantee only valid for products bought direct from Abcam or one of our authorized distributors