


Anti-Bcr (phospho Y177) antibody [EPR576(2)Y] ab68216

リコンビナント RabMAb[®]

画像数 2

製品の概要

| | |
|--------------|---|
| 製品名 | Anti-Bcr (phospho Y177) antibody [EPR576(2)Y] |
| 製品の詳細 | Rabbit monoclonal [EPR576(2)Y] to Bcr (phospho Y177) |
| 由来種 | Rabbit |
| アプリケーション | 適用あり: WB 適用なし: Flow Cyt, ICC/IF, IHC-P or IP |
| 種交差性 | 交差種: Mouse 交差が予測される動物種: Human  |
| 免疫原 | Synthetic peptide within Human Bcr (phospho Y177). The exact sequence is proprietary. |
| ポジティブ・コントロール | 3T3 cell lysates |
| 特記事項 | <p>This product is a recombinant monoclonal antibody, which offers several advantages including:</p> <ul style="list-style-type: none">- High batch-to-batch consistency and reproducibility- Improved sensitivity and specificity- Long-term security of supply- Animal-free production <p>For more information see here.</p> <p>Our RabMAb[®] technology is a patented hybridoma-based technology for making rabbit monoclonal antibodies. For details on our patents, please refer to RabMAb[®] patents.</p> <p>Mouse, Rat: We have preliminary internal testing data to indicate this antibody may not react with these species. Please contact us for more information.</p> |

製品の特性

| | |
|-------|--|
| 製品の状態 | Liquid |
| 保存方法 | Shipped at 4°C. Upon delivery aliquot and store at -20°C. Avoid freeze / thaw cycles. |
| バッファー | pH: 7.2 Preservative: 0.01% Sodium azide Constituents: 9% PBS, 40% Glycerol (glycerin, glycerine), 0.05% BSA, 50% Tissue culture supernatant |
| 精製度 | Protein A purified |

| | |
|--------|------------|
| ポリ/モノ | モノクローナル |
| クローン名 | EPR576(2)Y |
| アイソタイプ | IgG |

アプリケーション

The Abpromise guarantee **Abpromise保証は、次のテスト済みアプリケーションにおけるab68216の使用に適用されず**
 アプリケーションノートには、推奨の開始希釈率がありますが、適切な希釈率につきましてはご検討ください。

| アプリケーション | Abreviews | 特記事項 |
|----------|-----------|------|
| WB | | |

追加情報

WB: 1/1000 - 1/2000. Detects a band of approximately 153 kDa (predicted molecular weight: 143 kDa).

Is unsuitable for Flow Cyt, ICC, IHC-P or IP.

Not yet tested in other applications.

Optimal dilutions/concentrations should be determined by the end user.

ターゲット情報

機能

GTPase-activating protein for RAC1 and CDC42. Promotes the exchange of RAC or CDC42-bound GDP by GTP, thereby activating them. Displays serine/threonine kinase activity.

関連疾患

Note=A chromosomal aberration involving BCR is a cause of chronic myeloid leukemia. Translocation t(9;22)(q34;q11) with ABL1. The translocation produces a BCR-ABL found also in acute myeloid leukemia (AML) and acute lymphoblastic leukemia (ALL).

配列類似性

Contains 1 C2 domain.
 Contains 1 DH (DBL-homology) domain.
 Contains 1 PH domain.
 Contains 1 Rho-GAP domain.

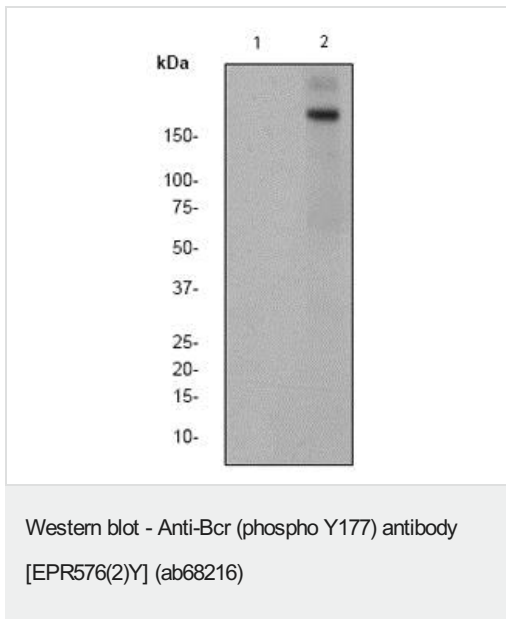
ドメイン

The region involved in binding to ABL1 SH2-domain is rich in serine residues and needs to be Ser/Thr phosphorylated prior to SH2 binding. This region is essential for the activation of the ABL1 tyrosine kinase and transforming potential of the chimeric BCR-ABL oncogene. The DH domain is involved in interaction with CCGP1.

翻訳後修飾

Autophosphorylated. Phosphorylated by FES/FPS on tyrosine residues, leading to down-regulation of the BCR kinase activity. Phosphorylation at Tyr-177 by HCK is important for interaction with GRB2.

画像



All lanes : Anti-Bcr (phospho Y177) antibody [EPR576(2)Y] (ab68216) at 1/1000 dilution

Lane 1 : 3T3 cell lysate, membrane un-treated

Lane 2 : 3T3 cell lysate, membrane treated with pervanadate

Lysates/proteins at 10 µg per lane.

Secondary

All lanes : HRP labelled goat anti-rabbit at 1/2000 dilution

Predicted band size: 143 kDa

Observed band size: 153 kDa

Why choose a recombinant antibody?

| | |
|--|--|
| <p>Research with confidence Consistent and reproducible results</p> | <p>Long-term and scalable supply Recombinant technology</p> |
| <p>Success from the first experiment Confirmed specificity</p> | <p>Ethical standards compliant Animal-free production</p> |

Anti-Bcr (phospho Y177) antibody [EPR576(2)Y] (ab68216)

Please note: All products are "FOR RESEARCH USE ONLY. NOT FOR USE IN DIAGNOSTIC PROCEDURES"

Our Abpromise to you: Quality guaranteed and expert technical support

- Replacement or refund for products not performing as stated on the datasheet
- Valid for 12 months from date of delivery
- Response to your inquiry within 24 hours
- We provide support in Chinese, English, French, German, Japanese and Spanish
- Extensive multi-media technical resources to help you
- We investigate all quality concerns to ensure our products perform to the highest standards

If the product does not perform as described on this datasheet, we will offer a refund or replacement. For full details of the Abpromise, please visit <https://www.abcam.co.jp/abpromise> or contact our technical team.

Terms and conditions

- Guarantee only valid for products bought direct from Abcam or one of our authorized distributors