

Anti-BCMA antibody - C-terminal ab5972

8 References [画像数 4](#)

製品の概要

製品名	Anti-BCMA antibody - C-terminal
製品の詳細	Rabbit polyclonal to BCMA - C-terminal
由来種	Rabbit
アプリケーション	適用あり: ICC/IF, IHC-P, WB
種交差性	交差種: Human
免疫原	Synthetic peptide corresponding to Human BCMA (C terminal). (Peptide available as ab6087)
ポジティブ・コントロール	Human spleen tissue lysate, K562 or U937 whole cell lysates.
特記事項	<p>Members in the TNF superfamily regulate immune responses and induce apoptosis. Two novel members in the TNF family were recently identified and designated BAFF/BLyS/TALL1/THANK/zTNF4 and April/TALL2, respectively. BAFF was characterized as a B cell activator since it induced B cell proliferation and immunoglobulin secretion. April regulates immunological and non immunological cell growth. Three receptors, BCMA (for B cell maturation protein), TACI, and BAFFR, for BAFF were recently identified. BCMA, like TACI, binds BAFF and April. BAFF and its receptors induce B cell development and survival, activate NF-kappaB and c-jun N-terminal kinase, and are involved in B cell associated autoimmune diseases.</p> <p>The Life Science industry has been in the grips of a reproducibility crisis for a number of years. Abcam is leading the way in addressing this with our range of recombinant monoclonal antibodies and knockout edited cell lines for gold-standard validation. Please check that this product meets your needs before purchasing.</p> <p>If you have any questions, special requirements or concerns, please send us an inquiry and/or contact our Support team ahead of purchase. Recommended alternatives for this product can be found below, along with publications, customer reviews and Q&As</p>

製品の特性

製品の状態	Liquid
保存方法	Shipped at 4°C. Store at +4°C short term (1-2 weeks). Store at +4°C.
バッファー	pH: 7.2 Preservative: 0.02% Sodium azide
精製度	Immunogen affinity purified

特記事項 (精製)

BCMA Antibody is affinity chromatography purified via peptide column.

一次抗体 備考

Members in the TNF superfamily regulate immune responses and induce apoptosis. Two novel members in the TNF family were recently identified and designated BAFF/BLyS/TALL1/THANK/zTNF4 and April/TALL2, respectively. BAFF was characterized as a B cell activator since it induced B cell proliferation and immunoglobulin secretion. April regulates immunological and non immunological cell growth. Three receptors, BCMA (for B cell maturation protein), TACI, and BAFFR, for BAFF were recently identified. BCMA, like TACI, binds BAFF and April. BAFF and its receptors induce B cell development and survival, activate NF-kappaB and c-jun N-terminal kinase, and are involved in B cell associated autoimmune diseases.

ポリ/モノ

ポリクローナル

アイソタイプ

IgG

アプリケーション**The Abpromise guarantee**

Abpromise保証は、次のテスト済みアプリケーションにおけるab5972の使用に適用されます

アプリケーションノートには、推奨の開始希釈率がありますが、適切な希釈率につきましてはご検討ください。

アプリケーション	Abreviews	特記事項
ICC/IF		Use a concentration of 20 µg/ml.
IHC-P		Use a concentration of 10 µg/ml.
WB		Use a concentration of 2 - 5 µg/ml. Predicted molecular weight: 20 kDa.

ターゲット情報**機能**

Receptor for TNFSF13B/BLyS/BAFF and TNFSF13/APRIL. Promotes B-cell survival and plays a role in the regulation of humoral immunity. Activates NF-kappa-B and JNK.

組織特異性

Expressed in mature B-cells, but not in T-cells or monocytes.

関連疾患

Note=A chromosomal aberration involving TNFRSF17 is found in a form of T-cell acute lymphoblastic leukemia (T-ALL). Translocation t(4;16)(q26;p13) with IL2.

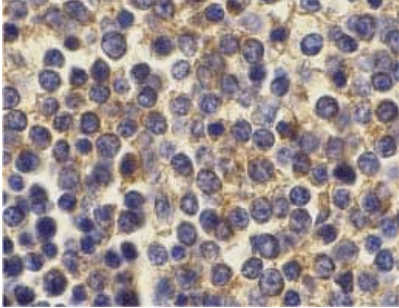
配列類似性

Contains 1 TNFR-Cys repeat.

細胞内局在

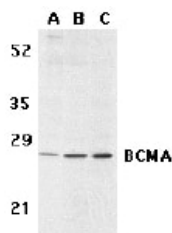
Cell membrane. Endomembrane system. Perinuclear Golgi-like structures.

画像



ab5972 at 10µg/ml staining BCMA in human spleen cells by IHC

Immunohistochemistry (Formalin/PFA-fixed paraffin-embedded sections) - Anti-BCMA antibody - C-terminal (ab5972)



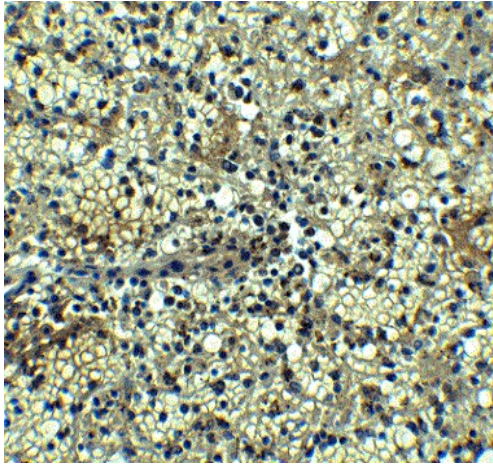
Western blot analysis of BCMA in human spleen (A) tissue lysate, K562 (B), and U937 (C) cell lysates with ab5972 at 5 µg/ml.

Western blot analysis of BCMA in human spleen (A) tissue lysate, K562 (B), and U937 (C) cell lysates with ab5972 at 5 µg/ml.

Western blot - Anti-BCMA antibody - C-terminal (ab5972)

Immunocytochemistry/ Immunofluorescence - Anti-BCMA antibody - C-terminal (ab5972)

Immunofluorescence of BCMA in Human Spleen cells using ab5972 at 10 ug/ml.



Immunohistochemistry of BCMA in human spleen tissue with BCMA antibody at 5 µg/ml.

Immunohistochemistry (Formalin/PFA-fixed paraffin-embedded sections) - Anti-BCMA antibody - C-terminal (ab5972)

Please note: All products are "FOR RESEARCH USE ONLY. NOT FOR USE IN DIAGNOSTIC PROCEDURES"

Our Abpromise to you: Quality guaranteed and expert technical support

- Replacement or refund for products not performing as stated on the datasheet
- Valid for 12 months from date of delivery
- Response to your inquiry within 24 hours
- We provide support in Chinese, English, French, German, Japanese and Spanish
- Extensive multi-media technical resources to help you
- We investigate all quality concerns to ensure our products perform to the highest standards

If the product does not perform as described on this datasheet, we will offer a refund or replacement. For full details of the Abpromise, please visit <https://www.abcam.co.jp/abpromise> or contact our technical team.

Terms and conditions

- Guarantee only valid for products bought direct from Abcam or one of our authorized distributors