

Anti-Bcl6 antibody ab19011

14 References 画像数 1

医薬用外劇物

製品の概要

製品名	Anti-Bcl6 antibody
製品の詳細	Rabbit polyclonal to Bcl6
由来種	Rabbit
特異性	Detects 80-100 kDa Bcl-6 of human, mouse, and rat origins.
アプリケーション	適用あり: WB
種交差性	交差種: Human
免疫原	Synthetic peptide mapping to the C terminus of human Bcl6.
特記事項	<p>This product is manufactured by BioVision, an Abcam company and was previously called 3408 Anti-Bcl-6 Antibody.</p> <p>The Life Science industry has been in the grips of a reproducibility crisis for a number of years. Abcam is leading the way in addressing this with our range of recombinant monoclonal antibodies and knockout edited cell lines for gold-standard validation. Please check that this product meets your needs before purchasing.</p> <p>If you have any questions, special requirements or concerns, please send us an inquiry and/or contact our Support team ahead of purchase. Recommended alternatives for this product can be found below, along with publications, customer reviews and Q&As</p>

製品の特性

製品の状態	Liquid
保存方法	Shipped at 4°C. Store at +4°C short term (1-2 weeks). Upon delivery aliquot. Store at -20°C long term. Avoid freeze / thaw cycle.
バッファー	Preservative: 0.01% Thimerosal (merthiolate) Constituents: PBS, 30% Glycerol (glycerin, glycerine), 0.5% BSA
精製度	Immunogen affinity purified
ポリ/モノ	ポリクローナル
アイソタイプ	IgG

アプリケーション

The Abpromise guarantee

Abpromise保証は、次のテスト済みアプリケーションにおけるab19011の使用に適用されます

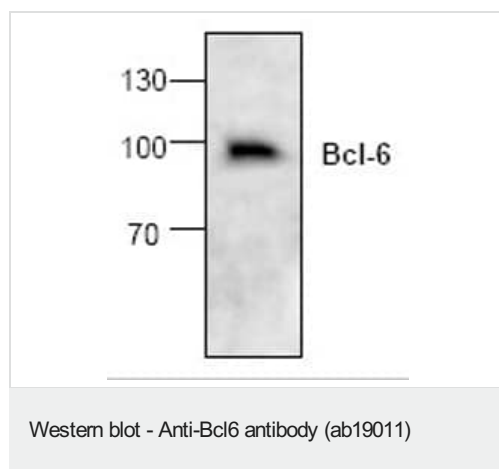
アプリケーションノートには、推奨の開始希釈率がありますが、適切な希釈率につきましてはご確認ください。

アプリケーション	Abreviews	特記事項
WB		Use a concentration of 1 - 4 µg/ml. Predicted molecular weight: 79 kDa.

ターゲット情報

機能	Transcriptional repressor which is required for germinal center formation and antibody affinity maturation. Probably plays an important role in lymphomagenesis.
組織特異性	Expressed in germinal center T and B cells and in primary immature dendritic cells.
関連疾患	Note=Chromosomal aberrations involving BCL6 may be a cause of B-cell non-Hodgkin lymphoma. Translocation t(3;14)(q27;q32); translocation t(3;22)(q27;q11) with immunoglobulin gene regions. Note=A chromosomal aberration involving BCL6 may be a cause of a form of B-cell leukemia. Translocation t(3;11)(q27;q23) with POU2AF1/OBF1. Note=A chromosomal aberration involving BCL6 may be a cause of lymphoma. Translocation t(3;4)(q27;p11) with ARHH/TTF.
配列類似性	Contains 1 BTB (POZ) domain. Contains 6 C2H2-type zinc fingers.
ドメイン	The BTB domain mediates homodimerization. Its dimer interface mediates peptide binding such as to corepressors BCOR and NCOR2.
翻訳後修飾	Phosphorylated by MAPK1 in response to antigen receptor activation. Phosphorylation induces its degradation by ubiquitin/proteasome pathway.
細胞内局在	Nucleus.

画像



Western blot analysis of Bcl-6 in Jurkat cell lysate using **ab19011**.

Western blot analysis of Bcl-6 in Jurkat cell lysate using **ab19011**.

Please note: All products are "FOR RESEARCH USE ONLY. NOT FOR USE IN DIAGNOSTIC PROCEDURES"

Our Abpromise to you: Quality guaranteed and expert technical support

- Replacement or refund for products not performing as stated on the datasheet
- Valid for 12 months from date of delivery
- Response to your inquiry within 24 hours

- We provide support in Chinese, English, French, German, Japanese and Spanish
- Extensive multi-media technical resources to help you
- We investigate all quality concerns to ensure our products perform to the highest standards

If the product does not perform as described on this datasheet, we will offer a refund or replacement. For full details of the Abpromise, please visit <https://www.abcam.co.jp/abpromise> or contact our technical team.

Terms and conditions

- Guarantee only valid for products bought direct from Abcam or one of our authorized distributors