

Anti-Bcl3 antibody ab27780

★☆☆☆☆ 2 Abreviews 2 References 画像数 1

医薬用外劇物

製品の概要

製品名	Anti-Bcl3 antibody
製品の詳細	Rabbit polyclonal to Bcl3
由来種	Rabbit
アプリケーション	適用あり: WB
種交差性	交差種: Human
免疫原	Synthetic peptide corresponding to Human Bcl3. Synthetic peptide surrounding amino acid 424 of human Bcl-3 Database link: P20749
ポジティブ・コントロール	WB: Jurkat
特記事項	<p>This product is manufactured by BioVision, an Abcam company and was previously called 3407 Bcl-3 Antibody. 3407-100 is the same size as the 100 µg size of ab27780.</p> <p>The Life Science industry has been in the grips of a reproducibility crisis for a number of years. Abcam is leading the way in addressing this with our range of recombinant monoclonal antibodies and knockout edited cell lines for gold-standard validation. Please check that this product meets your needs before purchasing.</p> <p>If you have any questions, special requirements or concerns, please send us an inquiry and/or contact our Support team ahead of purchase. Recommended alternatives for this product can be found below, along with publications, customer reviews and Q&As</p>

製品の特性

製品の状態	Liquid
保存方法	Shipped at 4°C. Store at +4°C short term (1-2 weeks). Upon delivery aliquot. Store at -20°C. Avoid freeze / thaw cycle.
バッファー	pH: 7.2 Preservative: 0.01% Thimerosal (merthiolate) Constituents: 30% Glycerol (glycerin, glycerine), 0.5% BSA, 69% PBS
精製度	Protein G purified
特記事項(精製)	Affinity purified
ポリ/モノ	ポリクローナル

アプリケーション

The Abpromise guarantee

Abpromise保証は、次のテスト済みアプリケーションにおけるab27780の使用に適用されます

アプリケーションノートには、推奨の開始希釈率がありますが、適切な希釈率につきましてはご検討ください。

アプリケーション	Abreviews	特記事項
WB	★☆☆☆☆ (1)	Use a concentration of 1 - 4 µg/ml. Detects a band of approximately 60 kDa (predicted molecular weight: 47 kDa).

ターゲット情報

機能

Contributes to the regulation of transcriptional activation of NF-kappa-B target genes. In the cytoplasm, inhibits the nuclear translocation of the NF-kappa-B p50 subunit. In the nucleus, acts as transcriptional activator that promotes transcription of NF-kappa-B target genes. Contributes to the regulation of cell proliferation.

関連疾患

Note=A chromosomal aberration involving BCL3 may be a cause of B-cell chronic lymphocytic leukemia (B-CLL). Translocation t(14;19)(q32;q13.1) with immunoglobulin gene regions.

配列類似性

Contains 7 ANK repeats.

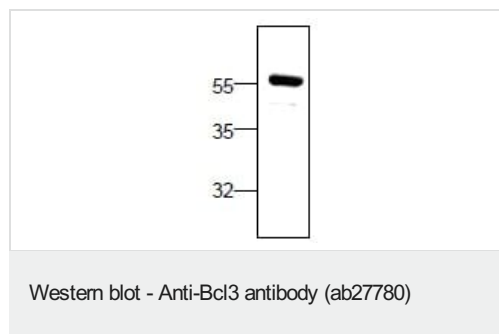
翻訳後修飾

Polyubiquitinated. Ubiquitination via 'Lys-63'-linked ubiquitin chains is required for nuclear accumulation. Deubiquitinated by CYLD, which acts on 'Lys-63'-linked ubiquitin chains. Deubiquitination by CYLD prevents nuclear accumulation. Activated by phosphorylation.

細胞内局在

Nucleus. Cytoplasm. Cytoplasm > perinuclear region. Ubiquitination via 'Lys-63'-linked ubiquitin chains is required for nuclear accumulation.

画像



Anti-Bcl3 antibody (ab27780) at 2 µg/ml + Jurkat

Predicted band size: 47 kDa

Please note: All products are "FOR RESEARCH USE ONLY. NOT FOR USE IN DIAGNOSTIC PROCEDURES"

Our Abpromise to you: Quality guaranteed and expert technical support

- Replacement or refund for products not performing as stated on the datasheet

- Valid for 12 months from date of delivery
- Response to your inquiry within 24 hours

- We provide support in Chinese, English, French, German, Japanese and Spanish
- Extensive multi-media technical resources to help you
- We investigate all quality concerns to ensure our products perform to the highest standards

If the product does not perform as described on this datasheet, we will offer a refund or replacement. For full details of the Abpromise, please visit <https://www.abcam.co.jp/abpromise> or contact our technical team.

Terms and conditions

- Guarantee only valid for products bought direct from Abcam or one of our authorized distributors