

Anti-Bcl10 antibody [ep605y] ab40752

リコンビナント **RabMAb**

1 References [画像数 8](#)

製品の概要

製品名	Anti-Bcl10 antibody [ep605y]
製品の詳細	Rabbit monoclonal [ep605y] to Bcl10
由来種	Rabbit
特異性	Not suitable for mouse IHC-P.
アプリケーション	適用あり: Flow Cyt (Intra), WB, IHC-P, IP
種交差性	交差種: Mouse, Human
免疫原	Synthetic peptide within Human Bcl10 (N terminal). The exact sequence is proprietary.
ポジティブ・コントロール	WB: Raji, WEHI-231, RAW 264.7 whole cell and mouse spleen tissue lysates. Flow Cyt (intra): Daudi cells. IP: Daudi and WEHI-231 whole cell lysates. IHC-P: Human colon carcinoma.
特記事項	<p>This product is a recombinant monoclonal antibody, which offers several advantages including:</p> <ul style="list-style-type: none"> - High batch-to-batch consistency and reproducibility - Improved sensitivity and specificity - Long-term security of supply - Animal-free production <p>For more information see here.</p> <p>Our RabMAb[®] technology is a patented hybridoma-based technology for making rabbit monoclonal antibodies. For details on our patents, please refer to RabMAb[®] patents.</p> <p>Mouse, Rat: We have preliminary internal testing data to indicate this antibody may not react with these species. Please contact us for more information.</p>

製品の特性

製品の状態	Liquid
保存方法	Shipped at 4°C. Upon delivery aliquot and store at -20°C. Avoid freeze / thaw cycles.
バッファー	<p>pH: 7.20</p> <p>Preservative: 0.01% Sodium azide</p> <p>Constituents: 9% PBS, 40% Glycerol (glycerin, glycerine), 0.05% BSA, 50% Tissue culture supernatant</p>
精製度	Protein A purified

ポリ/モノ	モノクローナル
クローン名	ep605y
アイソタイプ	IgG

アプリケーション

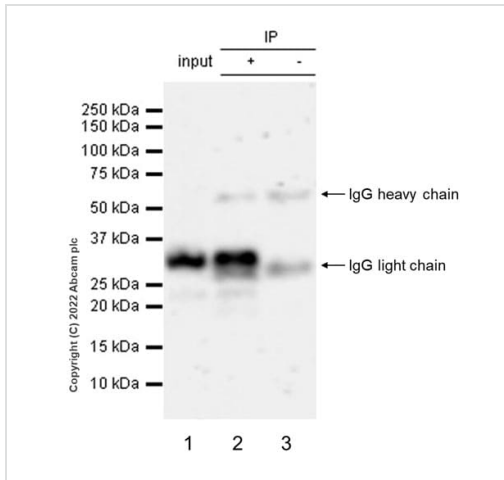
The Abpromise guarantee **Abpromise保証は、次のテスト済みアプリケーションにおけるab40752の使用に適用されます**
 アプリケーションノートには、推奨の開始希釈率がありますが、適切な希釈率につきましてはご検討ください。

アプリケーション	Abreviews	特記事項
Flow Cyt (Intra)		1/100. ab172730 - Rabbit monoclonal IgG, is suitable for use as an isotype control with this antibody.
WB		1/2000. Detects a band of approximately 32 kDa (predicted molecular weight: 31 kDa).
IHC-P		Use at an assay dependent concentration. Perform heat mediated antigen retrieval with citrate buffer pH 6 before commencing with IHC staining protocol.
IP		1/30 - 1/50.

ターゲット情報

機能	Promotes apoptosis, pro-caspase-9 maturation and activation of NF-kappa-B via NIK and IKK. May be an adapter protein between upstream TNFR1-TRADD-RIP complex and the downstream NIK-IKK-IKAP complex. Is a substrate for MALT1.
組織特異性	Ubiquitous.
関連疾患	Note=A chromosomal aberration involving BCL10 is recurrent in low-grade mucosa-associated lymphoid tissue (MALT lymphoma). Translocation t(1;14)(p22;q32). Although the BCL10/IgH translocation leaves the coding region of BCL10 intact, frequent BCL10 mutations could be attributed to the Ig somatic hypermutation mechanism resulting in nucleotide transitions. Note=Defects in BCL10 are involved in various types of cancer.
配列類似性	Contains 1 CARD domain.
翻訳後修飾	Phosphorylated. Phosphorylation results in dissociation from TRAF2 and binding to BIRC2/c-IAP2.
細胞内局在	Cytoplasm > perinuclear region. Membrane raft. Appears to have a perinuclear, compact and filamentous pattern of expression. Also found in the nucleus of several types of tumor cells. Colocalized with DPP4 in membrane rafts.

画像



Immunoprecipitation - Anti-Bcl10 antibody [ep605y]
(ab40752)

32 kDa Bcl10 was immunoprecipitated from 0.35mg WEHI-231 (mouse B cell lymphoma B lymphocyte), whole cell lysate with ab40752 at 1/30 dilution. Western blot was performed from the immunoprecipitate using ab40752 at 1/1000 dilution. VeriBlot for IP Detection Reagent (HRP) ([ab131366](#)) was used at 1/1000 dilution.

Lane 1 (Input): WEHI-231 (mouse B cell lymphoma B lymphocyte), whole cell lysate 10 µg.

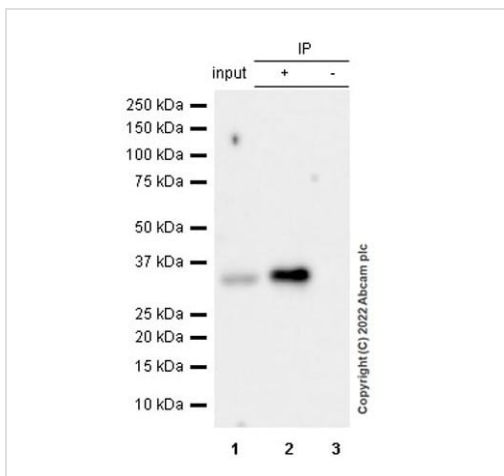
Lane 2 (+): WEHI-231 whole cell lysate.

Lane 3 (-): Rabbit monoclonal IgG ([ab172730](#)) instead of ab40752 in WEHI-231 whole cell lysate.

Blocking buffer and concentration: 5% NFDM/TBST.

Diluting buffer and concentration: 5% NFDM/TBST.

Exposure time: 102 seconds.



Immunoprecipitation - Anti-Bcl10 antibody [ep605y]
(ab40752)

32 kDa Bcl10 was immunoprecipitated from 0.35mg of Daudi (human Burkitt's lymphoma lymphoblast) whole cell lysate with ab40752 at 1/30 dilution. Western blot was performed from the immunoprecipitate using ab40752 at 1/500 dilution. VeriBlot for IP Detection Reagent (HRP) ([ab131366](#)) was used at 1/1000 dilution.

Lane 1 (Input): Daudi (human Burkitt's lymphoma lymphoblast) whole cell lysate 10 µg.

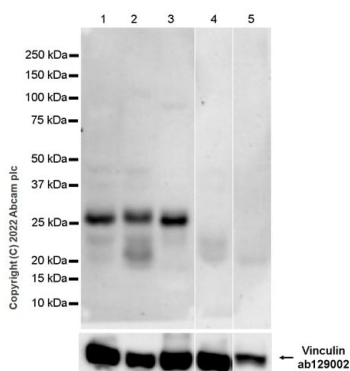
Lane 2 (+): Daudi whole cell lysate.

Lane 3 (-): Rabbit monoclonal IgG ([ab172730](#)) instead of ab40752 in Daudi whole cell lysate.

Blocking buffer and concentration: 5% NFDM/TBST.

Diluting buffer and concentration: 5% NFDM/TBST.

Exposure time: 32 seconds.



Western blot - Anti-Bcl10 antibody [ep605y]
(ab40752)

All lanes : Anti-Bcl10 antibody [ep605y] (ab40752) at 1/2000 dilution

Lane 1 : WEHI-231 (mouse B cell lymphoma B lymphocyte) whole cell lysate

Lane 2 : RAW 264.7 (mouse Abelson murine leukemia virus-induced tumor macrophage) whole cell lysate

Lane 3 : Mouse spleen tissue lysate

Lane 4 : Mouse kidney tissue lysate

Lane 5 : Mouse bone marrow lysate

Lysates/proteins at 20 µg per lane.

Secondary

All lanes : Goat Anti-Rabbit IgG H&L (HRP) (**ab97051**) at 1/20000 dilution

Predicted band size: 31 kDa

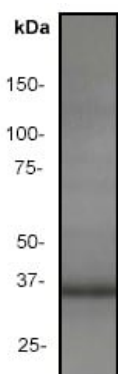
Exposure time: 103 seconds

Blocking buffer and concentration: 5% NFDM/TBST.

Diluting buffer and concentration: 5% NFDM/TBST.

ab129002 was used as a loading control.

The expression profile observed is consistent with what has been described in the literature (PMID: 10319863).

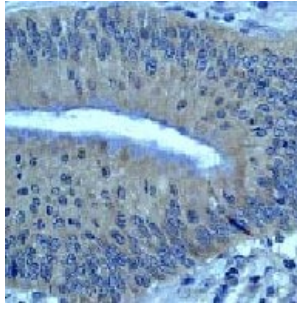


Western blot - Anti-Bcl10 antibody [ep605y]
(ab40752)

Anti-Bcl10 antibody [ep605y] (ab40752) at 1/2000 dilution + Raji cell lysate at 10 µg

Predicted band size: 31 kDa

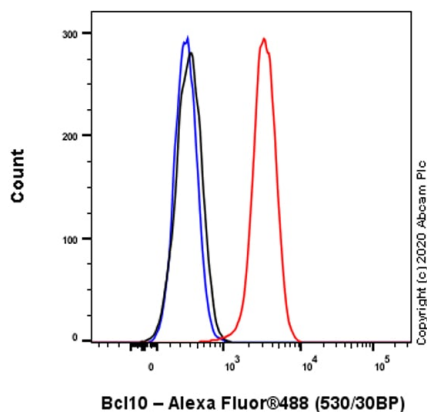
Observed band size: 32 kDa



Immunohistochemistry (Formalin/PFA-fixed paraffin-embedded sections) - Anti-Bcl10 antibody [ep605y] (ab40752)

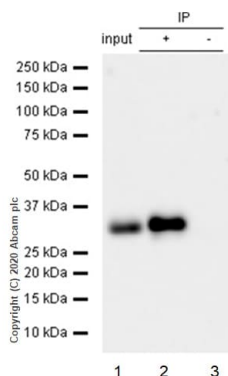
Immunohistochemical analysis of paraffin-embedded human colon carcinoma using ab40752 at a dilution of 1/50.

Perform heat mediated antigen retrieval with citrate buffer pH 6 before commencing with IHC staining protocol.



Flow Cytometry (Intracellular) - Anti-Bcl10 antibody [ep605y] (ab40752)

Intracellular Flow Cytometry analysis of Daudi (Human Burkitt's lymphoma lymphoblast) cells labeling Bcl10 with purified ab40752 at 1/100 dilution (10 µg/mL) (Red). Cells were fixed with 4% Paraformaldehyde and permeabilised with 90% Methanol. A Goat anti rabbit IgG (Alexa Fluor® 488, [ab150077](#)) secondary antibody was used at 1/2000. Isotype control - Rabbit monoclonal IgG (Black). Unlabeled control - Cells without incubation with primary antibody and secondary antibody (Blue).



Immunoprecipitation - Anti-Bcl10 antibody [ep605y] (ab40752)

Purified ab40752 at 1/50 dilution (2µg) immunoprecipitating Bcl10 in Daudi whole cell lysate.

Lane 1 (input): Daudi (Human Burkitt's lymphoma B lymphocyte) whole cell lysate 10µg

Lane 2 (+): ab40752 + Daudi whole cell lysate.

Lane 3 (-): Rabbit monoclonal IgG ([ab172730](#)) instead of ab40752 in Daudi whole cell lysate.





VeriBlot for IP Detection Reagent (HRP) ([ab131366](#)) (1/1000 dilution) was used for Western blotting.

Blocking Buffer and concentration: 5% NFDm/TBST.

Diluting buffer and concentration: 5% NFDm/TBST.

Observed band size: 32 kDa

Why choose a recombinant antibody?

 <p>Research with confidence Consistent and reproducible results</p>	 <p>Long-term and scalable supply Recombinant technology</p>
 <p>Success from the first experiment Confirmed specificity</p>	 <p>Ethical standards compliant Animal-free production</p>

Anti-Bcl10 antibody [ep605y] (ab40752)

Please note: All products are "FOR RESEARCH USE ONLY. NOT FOR USE IN DIAGNOSTIC PROCEDURES"

Our Abpromise to you: Quality guaranteed and expert technical support

- Replacement or refund for products not performing as stated on the datasheet
- Valid for 12 months from date of delivery
- Response to your inquiry within 24 hours
- We provide support in Chinese, English, French, German, Japanese and Spanish
- Extensive multi-media technical resources to help you
- We investigate all quality concerns to ensure our products perform to the highest standards

If the product does not perform as described on this datasheet, we will offer a refund or replacement. For full details of the Abpromise, please visit <https://www.abcam.co.jp/abpromise> or contact our technical team.

Terms and conditions

- Guarantee only valid for products bought direct from Abcam or one of our authorized distributors