

Anti-Bcl10 antibody [4F8E8H8] ab36585

画像数 5

製品の概要

製品名	Anti-Bcl10 antibody [4F8E8H8]
製品の詳細	Mouse monoclonal [4F8E8H8] to Bcl10
由来種	Mouse
アプリケーション	適用あり: IHC-P, WB, Flow Cyt, ICC/IF
種交差性	交差種: Mouse, Human
免疫原	Ni-NTA purified recombinant human BCL-10 expressed in E. Coli strain BL21 (DE3).
ポジティブ・コントロール	MCF-7 cell extract. Human breast and liver carcinoma tissue.
特記事項	<p>The Life Science industry has been in the grips of a reproducibility crisis for a number of years. Abcam is leading the way in addressing this with our range of recombinant monoclonal antibodies and knockout edited cell lines for gold-standard validation. Please check that this product meets your needs before purchasing.</p> <p>If you have any questions, special requirements or concerns, please send us an inquiry and/or contact our Support team ahead of purchase. Recommended alternatives for this product can be found below, along with publications, customer reviews and Q&As</p>

製品の特性

製品の状態	Liquid
保存方法	Shipped at 4°C. Upon delivery aliquot and store at -20°C or -80°C. Avoid repeated freeze / thaw cycles.
バッファー	Preservative: 0.05% Sodium azide Constituent: PBS
精製度	Protein G purified
特記事項(精製)	Purified from tissue culture supernatant.
ポリ/モノ	モノクローナル
クローン名	4F8E8H8
アイソタイプ	IgG1

アプリケーション

The Abpromise guarantee

Abpromise保証は、次のテスト済みアプリケーションにおけるab36585の使用に適用されます

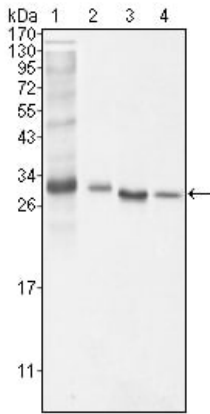
アプリケーションノートには、推奨の開始希釈率がありますが、適切な希釈率につきましてはご検討ください。

アプリケーション	Abreviews	特記事項
IHC-P		Use at an assay dependent concentration.
WB		1/500 - 1/2000. Detects a band of approximately 34 kDa (predicted molecular weight: 31 kDa).
Flow Cyt		1/200.
ICC/IF		1/200 - 1/1000.

ターゲット情報

機能	Promotes apoptosis, pro-caspase-9 maturation and activation of NF-kappa-B via NIK and IKK. May be an adapter protein between upstream TNFR1-TRADD-RIP complex and the downstream NIK-IKK-IKAP complex. Is a substrate for MALT1.
組織特異性	Ubiquitous.
関連疾患	Note=A chromosomal aberration involving BCL10 is recurrent in low-grade mucosa-associated lymphoid tissue (MALT lymphoma). Translocation t(1;14)(p22;q32). Although the BCL10/IgH translocation leaves the coding region of BCL10 intact, frequent BCL10 mutations could be attributed to the Ig somatic hypermutation mechanism resulting in nucleotide transitions. Note=Defects in BCL10 are involved in various types of cancer.
配列類似性	Contains 1 CARD domain.
翻訳後修飾	Phosphorylated. Phosphorylation results in dissociation from TRAF2 and binding to BIRC2/c-IAP2.
細胞内局在	Cytoplasm > perinuclear region. Membrane raft. Appears to have a perinuclear, compact and filamentous pattern of expression. Also found in the nucleus of several types of tumor cells. Colocalized with DPP4 in membrane rafts.

画像



Western blot - Anti-Bcl10 antibody [4F8E8H8] (ab36585)

All lanes : Anti-Bcl10 antibody [4F8E8H8] (ab36585) at 1/500 dilution

Lane 1 : Cell lysates prepared from NIH/3T3 cells

Lane 2 : Cell lysates prepared from HeLa cells

Lane 3 : Cell lysates prepared from MCF-7 cells

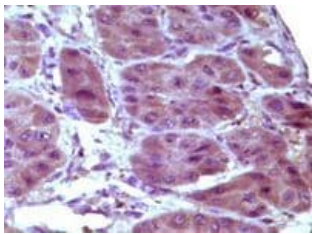
Lane 4 : Cell lysates prepared from Jurkat cells

Lysates/proteins at 100 µg per lane.

Secondary

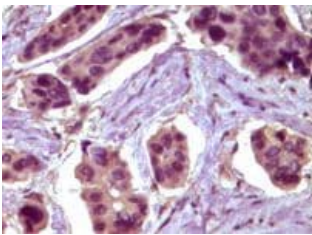
All lanes : HRP-conjugated Goat polyclonal to mouse IgG1

Predicted band size: 31 kDa



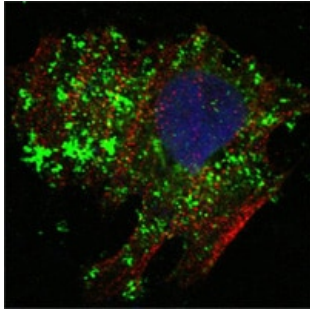
Immunohistochemistry (Formalin/PFA-fixed paraffin-embedded sections) - Anti-Bcl10 antibody [4F8E8H8] (ab36585)

Ab36585, at a 1/100 - 1/500 dilution, staining Bcl-10 in paraffin embedded human liver carcinoma tissue by immunohistochemistry with DAB staining.



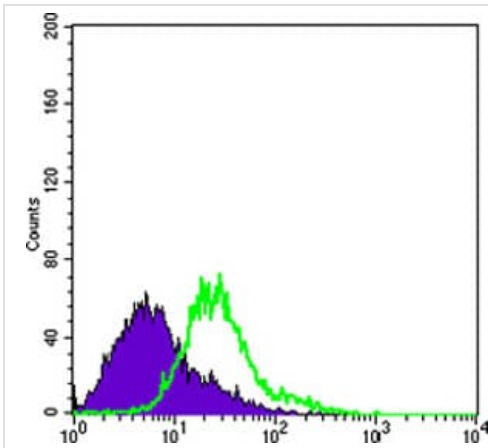
Immunohistochemistry (Formalin/PFA-fixed paraffin-embedded sections) - Anti-Bcl10 antibody [4F8E8H8] (ab36585)

Ab36585, at a 1/100 - 1/500 dilution, staining Bcl-10 in paraffin embedded human breast carcinoma tissue by immunohistochemistry with DAB staining.



Immunocytochemistry/ Immunofluorescence - Anti-Bcl10 antibody [4F8E8H8] (ab36585)

ab36585 at 1/1000 dilution staining Bcl10 in human HeLa cells by Immunocytochemistry/ Immunofluorescence. Bcl10 show green staining in image and actin filament stained red with Alexa Fluor®555 conjugated secondary. Nuclei stained blue with DRAQ5 fluorescent DNA dye.



Flow Cytometry - Anti-Bcl10 antibody [4F8E8H8] (ab36585)

Flow cytometric analysis of HeLa cells using ab36585 at a 1/200 dilution (green) and negative control (purple).

Please note: All products are "FOR RESEARCH USE ONLY. NOT FOR USE IN DIAGNOSTIC PROCEDURES"

Our Abpromise to you: Quality guaranteed and expert technical support

- Replacement or refund for products not performing as stated on the datasheet
- Valid for 12 months from date of delivery
- Response to your inquiry within 24 hours
- We provide support in Chinese, English, French, German, Japanese and Spanish
- Extensive multi-media technical resources to help you
- We investigate all quality concerns to ensure our products perform to the highest standards

If the product does not perform as described on this datasheet, we will offer a refund or replacement. For full details of the Abpromise, please visit <https://www.abcam.co.jp/abpromise> or contact our technical team.

Terms and conditions

- Guarantee only valid for products bought direct from Abcam or one of our authorized distributors