

Anti-Bcl10 antibody [151] ab93022

3 References [画像数 1](#)

製品の概要

製品名	Anti-Bcl10 antibody [151]
製品の詳細	Mouse monoclonal [151] to Bcl10
由来種	Mouse
アプリケーション	適用あり: IHC-P
種交差性	交差種: Human
免疫原	Recombinant full length protein within Human Bcl10 aa 100-200. The exact immunogen sequence used to generate this antibody is proprietary information. If additional detail on the immunogen is needed to determine the suitability of the antibody for your needs, please <u>contact</u> our Scientific Support team to discuss your requirements.
ポジティブ・コントロール	IHC-P: Human tonsil tissue.
特記事項	<p>The Life Science industry has been in the grips of a reproducibility crisis for a number of years. Abcam is leading the way in addressing this with our range of recombinant monoclonal antibodies and knockout edited cell lines for gold-standard validation. Please check that this product meets your needs before purchasing.</p> <p>If you have any questions, special requirements or concerns, please send us an inquiry and/or contact our Support team ahead of purchase. Recommended alternatives for this product can be found below, along with publications, customer reviews and Q&As</p>

製品の特性

製品の状態	Liquid
保存方法	Shipped at 4°C. Store at +4°C short term (1-2 weeks). Store at -20°C or -80°C. Avoid freeze / thaw cycle.
バッファー	<p>pH: 7.3</p> <p>Preservative: 0.05% Sodium azide</p> <p>Constituents: PBS, BSA</p>
精製度	Protein G purified
ポリ/モノ	モノクローナル
クローン名	151
アイソタイプ	IgG1

アプリケーション

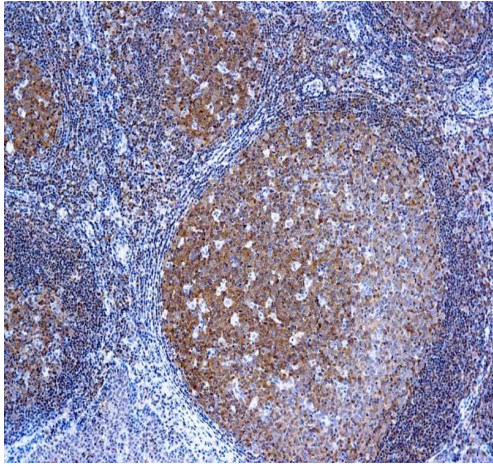
The Abpromise guarantee Abpromise保証は、次のテスト済みアプリケーションにおけるab93022の使用に適用されます
アプリケーションノートには、推奨の開始希釈率がありますが、適切な希釈率につきましてはご検討ください。

アプリケーション	Abreviews	特記事項
IHC-P		1/25 - 1/100. Pretreat tissue with citrate buffer pH 6. Incubate with primary antibody for 30 minutes at room temperature.

ターゲット情報

機能	Promotes apoptosis, pro-caspase-9 maturation and activation of NF-kappa-B via NIK and IKK. May be an adapter protein between upstream TNFR1-TRADD-RIP complex and the downstream NIK-IKK-IKAP complex. Is a substrate for MALT1.
組織特異性	Ubiquitous.
関連疾患	Note=A chromosomal aberration involving BCL10 is recurrent in low-grade mucosa-associated lymphoid tissue (MALT lymphoma). Translocation t(1;14)(p22;q32). Although the BCL10/IgH translocation leaves the coding region of BCL10 intact, frequent BCL10 mutations could be attributed to the Ig somatic hypermutation mechanism resulting in nucleotide transitions. Note=Defects in BCL10 are involved in various types of cancer.
配列類似性	Contains 1 CARD domain.
翻訳後修飾	Phosphorylated. Phosphorylation results in dissociation from TRAF2 and binding to BIRC2/c-IAP2.
細胞内局在	Cytoplasm > perinuclear region. Membrane raft. Appears to have a perinuclear, compact and filamentous pattern of expression. Also found in the nucleus of several types of tumor cells. Colocalized with DPP4 in membrane rafts.

画像



Immunohistochemistry (Formalin/PFA-fixed paraffin-embedded sections) analysis of Human tonsil tissue labeling Bcl10 with ab93022.

Immunohistochemistry (Formalin/PFA-fixed paraffin-embedded sections) - Anti-Bcl10 antibody [151] (ab93022)

Please note: All products are "FOR RESEARCH USE ONLY. NOT FOR USE IN DIAGNOSTIC PROCEDURES"

Our Abpromise to you: Quality guaranteed and expert technical support

- Replacement or refund for products not performing as stated on the datasheet
- Valid for 12 months from date of delivery
- Response to your inquiry within 24 hours
- We provide support in Chinese, English, French, German, Japanese and Spanish
- Extensive multi-media technical resources to help you
- We investigate all quality concerns to ensure our products perform to the highest standards

If the product does not perform as described on this datasheet, we will offer a refund or replacement. For full details of the Abpromise, please visit <https://www.abcam.co.jp/abpromise> or contact our technical team.

Terms and conditions

- Guarantee only valid for products bought direct from Abcam or one of our authorized distributors