

### Anti-Bcl-2 antibody ab59348

★★★★★ [3 Abreviews](#) [601 References](#) [画像数 3](#)

#### 製品の概要

製品名	Anti-Bcl-2 antibody
製品の詳細	Rabbit polyclonal to Bcl-2
由来種	Rabbit
アプリケーション	<b>適用あり:</b> WB, IHC-P, ICC/IF
種交差性	<b>交差種:</b> Human
免疫原	Synthetic peptide corresponding to Human Bcl-2. Sequence:  The antiserum was produced against synthesized non-phosphopeptide derived from human BCL-2 around the phosphorylation site of threonine 69 (A-R-TP-S-P).

Database link: [P10415](#)

 [Run BLAST with](#)

 [Run BLAST with](#)

#### 特記事項

Store at -20°C for year

The Life Science industry has been in the grips of a reproducibility crisis for a number of years. Abcam is leading the way in addressing this with our range of recombinant monoclonal antibodies and knockout edited cell lines for gold-standard validation. Please check that this product meets your needs before purchasing.

If you have any questions, special requirements or concerns, please send us an inquiry and/or contact our Support team ahead of purchase. Recommended alternatives for this product can be found below, along with publications, customer reviews and Q&As

#### 製品の特性

製品の状態	Liquid
保存方法	Shipped at 4°C. Upon delivery aliquot and store at -20°C. Avoid freeze / thaw cycles.
バッファー	pH: 7 Preservative: 0.02% Sodium azide Constituents: PBS, 50% Glycerol, 0.87% Sodium chloride

	Without Mg+2 and Ca+2
精製度	Immunogen affinity purified
特記事項 (精製)	Affinity purified from rabbit antiserum by affinity chromatography, using epitope specific immunogen
ポリ/モノ	ポリクローナル
アイソタイプ	IgG

アプリケーション

The Abpromise guarantee      **Abpromise保証は、** 次のテスト済みアプリケーションにおけるab59348の使用に適用されます  
 アプリケーションノートには、推奨の開始希釈率がありますが、適切な希釈率につきましてはご確認ください。

アプリケーション	Abreviews	特記事項
WB	★★★★★ (2)	1/500 - 1/1000. Detects a band of approximately 26 kDa. Positive control: K562 cell lysate.  Please see WB protocol details in the image legend.
IHC-P	★★★★★ (1)	1/50 - 1/100.
ICC/IF		1/100 - 1/500.

ターゲット情報

機能	Suppresses apoptosis in a variety of cell systems including factor-dependent lymphohematopoietic and neural cells. Regulates cell death by controlling the mitochondrial membrane permeability. Appears to function in a feedback loop system with caspases. Inhibits caspase activity either by preventing the release of cytochrome c from the mitochondria and/or by binding to the apoptosis-activating factor (APAF-1). May attenuate inflammation by impairing NLRP1-inflammasome activation, hence CASP1 activation and IL1B release (PubMed:17418785).
組織特異性	Expressed in a variety of tissues.
関連疾患	A chromosomal aberration involving BCL2 has been found in chronic lymphatic leukemia. Translocation t(14;18)(q32;q21) with immunoglobulin gene regions. BCL2 mutations found in non-Hodgkin lymphomas carrying the chromosomal translocation could be attributed to the Ig somatic hypermutation mechanism resulting in nucleotide transitions.
配列類似性	Belongs to the Bcl-2 family.
ドメイン	BH1 and BH2 domains are required for the interaction with BAX and for anti-apoptotic activity. The BH4 motif is required for anti-apoptotic activity and for interaction with RAF1 and EGLN3. The loop between motifs BH4 and BH3 is required for the interaction with NLRP1.
翻訳後修飾	Phosphorylation/dephosphorylation on Ser-70 regulates anti-apoptotic activity. Growth factor-stimulated phosphorylation on Ser-70 by PKC is required for the anti-apoptosis activity and occurs during the G2/M phase of the cell cycle. In the absence of growth factors, BCL2 appears to be phosphorylated by other protein kinases such as ERKs and stress-activated kinases. Phosphorylated by MAPK8/JNK1 at Thr-69, Ser-70 and Ser-87, wich stimulates starvation-induced autophagy. Dephosphorylated by protein phosphatase 2A (PP2A).

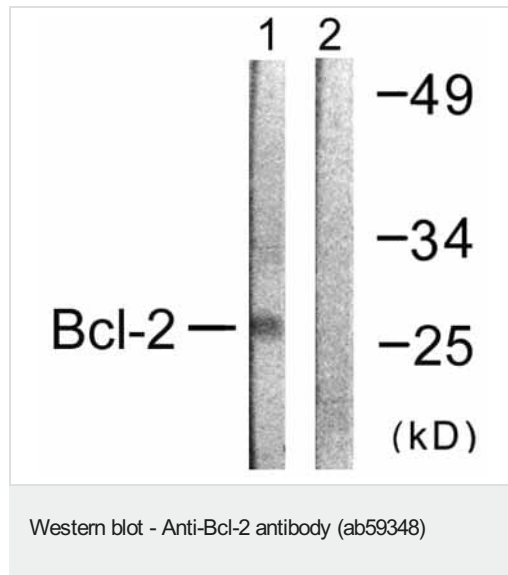
Proteolytically cleaved by caspases during apoptosis. The cleaved protein, lacking the BH4 motif, has pro-apoptotic activity, causes the release of cytochrome c into the cytosol promoting further caspase activity.

Monoubiquitinated by PARK2, leading to increase its stability. Ubiquitinated by SCF(FBXO10), leading to its degradation by the proteasome.

#### 細胞内局在

Mitochondrion outer membrane. Nucleus membrane. Endoplasmic reticulum membrane.

#### 画像



**All lanes :** Anti-Bcl-2 antibody (ab59348) at 1/500 dilution

**Lane 1 :** Extracts from K562 cells with no immunizing peptide

**Lane 2 :** Extracts from K562 cells with immunizing peptide

Lysates/proteins at 40 µg per lane.

**Observed band size:** 26 kDa

Blocking buffer: 5% (w/v) non-fat dry milk in TBST.

Primary antibody dilution buffer: 5%(w/v)non-fat dried milk,0.1% (v/v), Tween-20 in TBST.

Secondary antibody dilution buffer: 5%(w/v)non-fat dried milk,0.1% (v/v),Tween-20 in TBST.

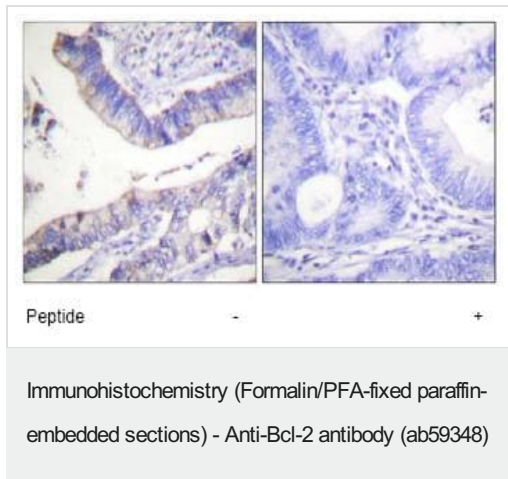
12% SDS gel. Nitrocellulose membrane.

Blocking: Room temperature for 2 hours or overnight at 4°C. Then wash 3x for 5 minutes with 0.05% blocking buffer.

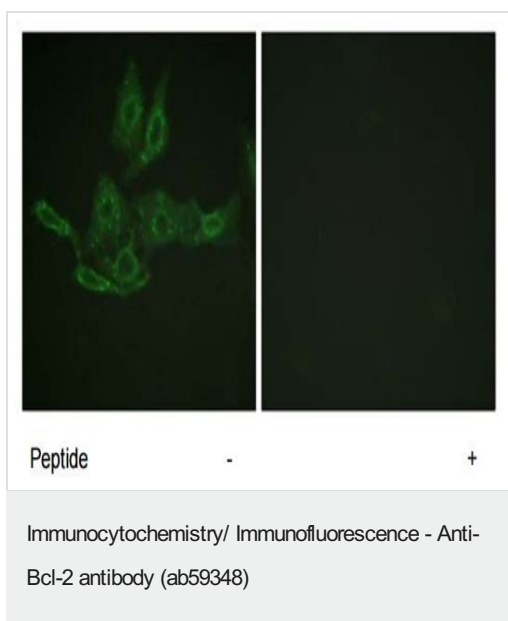
Primary antibody incubation: diluted in TBST at 1/500. Incubate overnight with 4 degrees shaking. Then, in 0.05% TBST, wash membrane 3-4 times for 10min.

Secondary antibody incubation: diluted in TBST at 1/2000. Incubate 37°C for 1 hour. Then, in 0.05% TBST, wash membrane 3-4 times for 10min.

ECL development.



ab59348, at a 1/50 dilution, staining human Bcl-2 in colon carcinoma, using Immunohistochemistry, Paraffin embedded tissue, in the absence (left image) and presence of the immunizing peptide (right image).



Immunocytochemistry/Immunofluorescence analysis of HepG2 cells labelling Bcl-2 with ab59348 in the absence (left image) and presence of the immunizing peptide (right image).

**Please note:** All products are "FOR RESEARCH USE ONLY. NOT FOR USE IN DIAGNOSTIC PROCEDURES"

### Our Abpromise to you: Quality guaranteed and expert technical support

- Replacement or refund for products not performing as stated on the datasheet
- Valid for 12 months from date of delivery
- Response to your inquiry within 24 hours
- We provide support in Chinese, English, French, German, Japanese and Spanish
- Extensive multi-media technical resources to help you
- We investigate all quality concerns to ensure our products perform to the highest standards

If the product does not perform as described on this datasheet, we will offer a refund or replacement. For full details of the Abpromise, please visit <https://www.abcam.co.jp/abpromise> or contact our technical team.

## Terms and conditions

---

- Guarantee only valid for products bought direct from Abcam or one of our authorized distributors