




Anti-Bcl-2 antibody [100/D5] - BSA and Azide free ab212800

画像数 3

製品の概要

製品名	Anti-Bcl-2 antibody [100/D5] - BSA and Azide free
製品の詳細	Mouse monoclonal [100/D5] to Bcl-2 - BSA and Azide free
由来種	Mouse
アプリケーション	適用あり: WB, Flow Cyt, IHC-P
種交差性	交差種: Human 交差が予測される動物種: Cow  非交差種: Mouse, Rat
免疫原	Synthetic peptide corresponding to Human Bcl-2 aa 1-100 (Cysteine residue). Database link: P10415  Run BLAST with  Run BLAST with
ポジティブ・コントロール	Jurkat, K562, HL60, or HeLa Cells. Tonsil or follicular lymphomas. Non- Hodgkin's lymphoma tissue. Human skin lysate.
特記事項	<p>The Life Science industry has been in the grips of a reproducibility crisis for a number of years. Abcam is leading the way in addressing this with our range of recombinant monoclonal antibodies and knockout edited cell lines for gold-standard validation. Please check that this product meets your needs before purchasing.</p> <p>If you have any questions, special requirements or concerns, please send us an inquiry and/or contact our Support team ahead of purchase. Recommended alternatives for this product can be found below, along with publications, customer reviews and Q&As</p>

製品の特性

製品の状態	Liquid
保存方法	Shipped at 4°C. Store at +4°C short term (1-2 weeks). Upon delivery aliquot. Store at -20°C long term. Avoid freeze / thaw cycle.
バッファー	pH: 7.2 Constituent: 100% PBS
キャリア・フリー	はい
精製度	Protein A/G purified
特記事項 (精製)	ab212800 is purified from Bioreactor Concentrate by Protein A/G.
ポリ/モノ	モノクローナル

クローン名	100/D5
アイソタイプ	IgG1
軽鎖の種類	kappa

アプリケーション

The Abpromise guarantee **Abpromise保証は、**次のテスト済みアプリケーションにおけるab212800の使用に適用されます
アプリケーションノートには、推奨の開始希釈率がありますが、適切な希釈率につきましてはご検討ください。

アプリケーション	Abreviews	特記事項
WB		Use a concentration of 1 - 2 µg/ml. Predicted molecular weight: 26 kDa.
Flow Cyt		Use 1-2µg for 10 ⁶ cells. (in 0.1ml volume)
IHC-P		Use a concentration of 1 - 2 µg/ml. Perform heat mediated antigen retrieval with Tris/EDTA buffer pH 9.0 before commencing with IHC staining protocol. (for 30 minutes at RT)

ターゲット情報

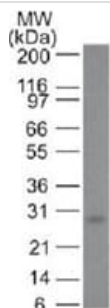
機能	Suppresses apoptosis in a variety of cell systems including factor-dependent lymphohematopoietic and neural cells. Regulates cell death by controlling the mitochondrial membrane permeability. Appears to function in a feedback loop system with caspases. Inhibits caspase activity either by preventing the release of cytochrome c from the mitochondria and/or by binding to the apoptosis-activating factor (APAF-1). May attenuate inflammation by impairing NLRP1-inflammasome activation, hence CASP1 activation and IL1B release (PubMed:17418785).
組織特異性	Expressed in a variety of tissues.
関連疾患	A chromosomal aberration involving BCL2 has been found in chronic lymphatic leukemia. Translocation t(14;18)(q32;q21) with immunoglobulin gene regions. BCL2 mutations found in non-Hodgkin lymphomas carrying the chromosomal translocation could be attributed to the Ig somatic hypermutation mechanism resulting in nucleotide transitions.
配列類似性	Belongs to the Bcl-2 family.
ドメイン	BH1 and BH2 domains are required for the interaction with BAX and for anti-apoptotic activity. The BH4 motif is required for anti-apoptotic activity and for interaction with RAF1 and EGLN3. The loop between motifs BH4 and BH3 is required for the interaction with NLRP1.
翻訳後修飾	Phosphorylation/dephosphorylation on Ser-70 regulates anti-apoptotic activity. Growth factor-stimulated phosphorylation on Ser-70 by PKC is required for the anti-apoptosis activity and occurs during the G2/M phase of the cell cycle. In the absence of growth factors, BCL2 appears to be phosphorylated by other protein kinases such as ERKs and stress-activated kinases. Phosphorylated by MAPK8/JNK1 at Thr-69, Ser-70 and Ser-87, wich stimulates starvation-induced autophagy. Dephosphorylated by protein phosphatase 2A (PP2A). Proteolytically cleaved by caspases during apoptosis. The cleaved protein, lacking the BH4 motif, has pro-apoptotic activity, causes the release of cytochrome c into the cytosol promoting further caspase activity.

Monoubiquitinated by PARK2, leading to increase its stability. Ubiquitinated by SCF(FBXO10), leading to its degradation by the proteasome.

細胞内局在

Mitochondrion outer membrane. Nucleus membrane. Endoplasmic reticulum membrane.

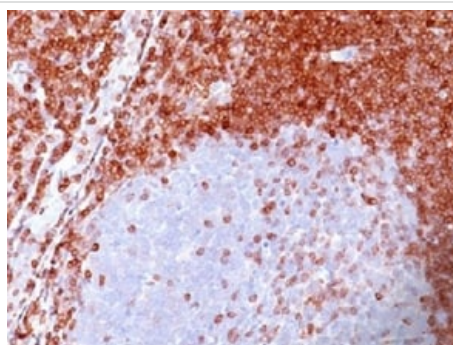
画像



Western blot - Anti-Bcl-2 antibody [100/D5] - BSA and Azide free (ab212800)

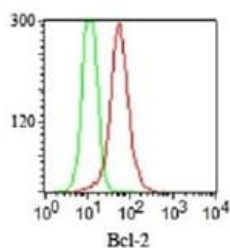
Anti-Bcl-2 antibody [100/D5] - BSA and Azide free (ab212800) at 1 μ g/ml + Human skin lysate

Predicted band size: 26 kDa



Immunohistochemistry (Formalin/PFA-fixed paraffin-embedded sections) - Anti-Bcl-2 antibody [100/D5] - BSA and Azide free (ab212800)

Immunohistochemical analysis of formalin-fixed, paraffin-embedded Human non-Hodgkin's Lymphoma tissue labeling Bcl-2 with ab212800 at 1 μ g/ml.



Flow Cytometry - Anti-Bcl-2 antibody [100/D5] - BSA and Azide free (ab212800)

Flow cytometric analysis of Jurkat cells labeling Bcl-2 with ab212800 at 1 μ g/ 10^6 cells (red), compared with an isotype control (green).

Please note: All products are "FOR RESEARCH USE ONLY. NOT FOR USE IN DIAGNOSTIC PROCEDURES"

Our Abpromise to you: Quality guaranteed and expert technical support

- Replacement or refund for products not performing as stated on the datasheet
- Valid for 12 months from date of delivery
- Response to your inquiry within 24 hours

- We provide support in Chinese, English, French, German, Japanese and Spanish
- Extensive multi-media technical resources to help you
- We investigate all quality concerns to ensure our products perform to the highest standards

If the product does not perform as described on this datasheet, we will offer a refund or replacement. For full details of the Abpromise, please visit <https://www.abcam.co.jp/abpromise> or contact our technical team.

Terms and conditions

- Guarantee only valid for products bought direct from Abcam or one of our authorized distributors