


Anti-BAP31 antibody [7A3BB6] ab112993

KO 評価済

画像数 5

製品の概要

製品名	Anti-BAP31 antibody [7A3BB6]
製品の詳細	Mouse monoclonal [7A3BB6] to BAP31
由来種	Mouse
特異性	Shotgun immunization of human HeLa cell lysates into mice. Targets were determined by mass spectrometry and validated by WB, ICC, ELISA pair and other techniques.
アプリケーション	適用あり: IHC-P, ICC/IF, WB, Flow Cyt
種交差性	交差種: Human 交差が予測される動物種: Mouse, Rat 
免疫原	Tissue, cells or virus. This information is considered to be commercially sensitive.
ポジティブ・コントロール	WB: HEK293T, HeLa, NCCIT and HepG2 cell lysates. Flow Cyt: HL60 cells. ICC/IF: Human fibroblast cells. IHC-P: Human normal colon FFPE tissue.
特記事項	<p>This antibody clone is manufactured by Abcam. If you require a custom buffer formulation or conjugation for your experiments, please contact orders@abcam.com.</p> <p>The Life Science industry has been in the grips of a reproducibility crisis for a number of years. Abcam is leading the way in addressing this with our range of recombinant monoclonal antibodies and knockout edited cell lines for gold-standard validation. Please check that this product meets your needs before purchasing.</p> <p>If you have any questions, special requirements or concerns, please send us an inquiry and/or contact our Support team ahead of purchase. Recommended alternatives for this product can be found below, along with publications, customer reviews and Q&As</p> <p>Product was previously marketed under the MitoSciences sub-brand.</p>

製品の特性

製品の状態	Liquid
保存方法	Shipped at 4°C. Store at +4°C. Do Not Freeze.
バッファー	pH: 7.5 Preservative: 0.02% Sodium azide

	Constituent: 99.98% HEPES buffered saline
精製度	Proprietary Purification
特記事項 (精製)	ab112993 was produced in vitro using hybridomas grown in serum-free medium, and then purified by biochemical fractionation. Monoclonal purity was near homogeneity as judged by SDS-PAGE (>95%).
ポリ/モノ	モノクローナル
クローン名	7A3BB6
アイソタイプ	IgG1
軽鎖の種類	kappa

アプリケーション

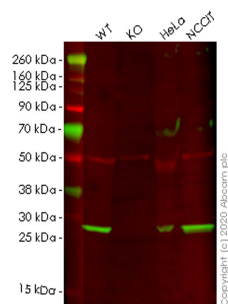
The Abpromise guarantee **Abpromise保証は、次のテスト済みアプリケーションにおけるab112993の使用に適用されます**
 アプリケーションノートには、推奨の開始希釈率がありますが、適切な希釈率につきましてはご確認ください。

アプリケーション	Abreviews	特記事項
IHC-P		Use a concentration of 5 µg/ml.
ICC/IF		Use a concentration of 5 µg/ml.
WB		Use a concentration of 0.5 µg/ml. Predicted molecular weight: 28 kDa.
Flow Cyt		Use a concentration of 1 µg/ml. ab170190 - Mouse monoclonal IgG1, is suitable for use as an isotype control with this antibody.

ターゲット情報

機能	May play a role in anterograde transport of membrane proteins from the endoplasmic reticulum to the Golgi. May be involved in CASP8-mediated apoptosis.
組織特異性	Ubiquitous.
関連疾患	Note=BCAP31 is deleted in the chromosome Xq28 deletion syndrome which involves BCAP31 and the and the promoter region of ABCD1.
配列類似性	Belongs to the BCAP29/BCAP31 family.
翻訳後修飾	Cleaved by CASP8 and other caspases.
細胞内局在	Endoplasmic reticulum membrane. Endoplasmic reticulum-Golgi intermediate compartment membrane. May shuttle between the ER and the intermediate compartment/cis-Golgi complex.

画像



Western blot - Anti-BAP31 antibody [7A3BB6] (ab112993)

All lanes : Anti-BAP31 antibody [7A3BB6] (ab112993) at 1/1000 dilution

Lane 1 : Wild-type HEK293T cell lysate

Lane 2 : BCAP31 knockout HEK293T cell lysate

Lane 3 : HeLa cell lysate

Lane 4 : NCCIT cell lysate

Lysates/proteins at 20 µg per lane.

Secondary

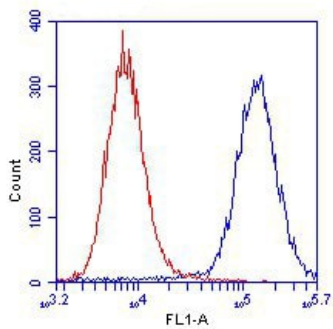
All lanes : Goat Anti-Rabbit IgG H&L (IRDye® 680RD) preadsorbed ([ab216777](#)) at 1/10000 dilution

Predicted band size: 28 kDa

Observed band size: 28 kDa

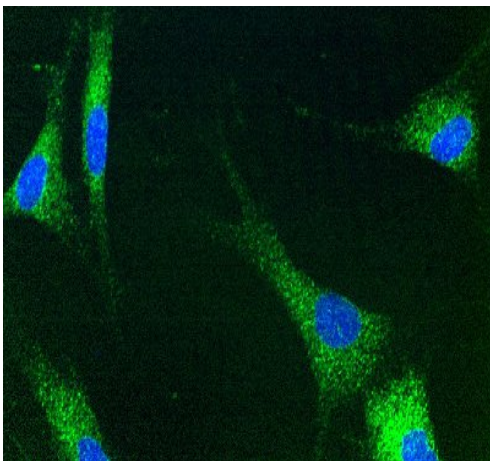
Lanes 1-4: Merged signal (red and green). Green - ab112993 observed at 28 kDa. Red - loading control [ab52901](#) observed at kDa.

ab112993 Anti-BAP31 antibody [7A3BB6] was shown to specifically react with BAP31 in wild-type HEK293T cells. Loss of signal was observed when knockout cell line [ab266634](#) (knockout cell lysate [ab257857](#)) was used. Wild-type and BAP31 knockout samples were subjected to SDS-PAGE. ab112993 and Anti-beta Tubulin [EP1331Y] - Microtubule Marker ([ab52901](#)) were incubated overnight at 4°C at 1 in 1000 dilution and 1 in 20000 dilution respectively. Blots were developed with Goat anti-Rabbit IgG H&L (IRDye® 680RD) preadsorbed ([ab216777](#)) and Goat anti-Mouse IgG H&L (IRDye® 800CW) preadsorbed ([ab216772](#)) secondary antibodies at 1 in 20000 dilution for 1 hour at room temperature before imaging.



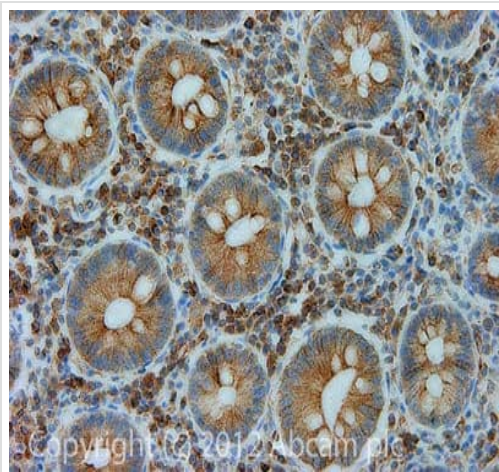
Flow Cytometry - Anti-BAP31 antibody [7A3BB6]
(ab112993)

ab112993 at 1ug/ml staining BAP31 in MeOH-fixed HL60 cells by Flow Cytometry (blue). Isotype control antibody (red).



Immunocytochemistry/ Immunofluorescence - Anti-BAP31 antibody [7A3BB6] (ab112993)

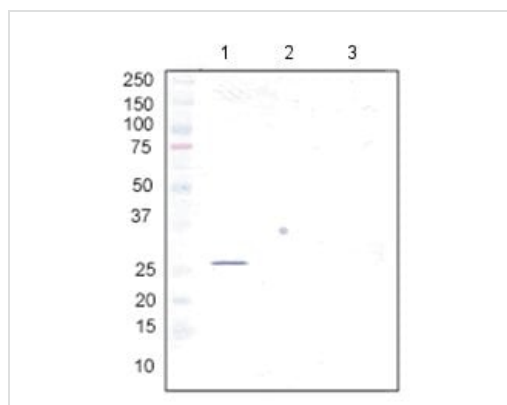
ab112993 at 5 µg/ml staining BAP31 in Human fibroblast cells by Immunocytochemistry (4% paraformaldehyde fixed and 0.1% Triton X-100 permeabilized) followed by Alexa Fluor® 488 goat anti-mouse IgG (H+L) used at a 1/1000 dilution for 1 hour (green). The target locates mainly in the endoplasmic reticulum.



Immunohistochemistry (Formalin/PFA-fixed paraffin-embedded sections) - Anti-BAP31 antibody [7A3BB6] (ab112993)

IHC image of BAP31 staining in Human normal colon formalin fixed paraffin embedded tissue section, performed on a Leica BondTM system using the standard protocol F. The section was pre-treated using heat mediated antigen retrieval with sodium citrate buffer (pH6, epitope retrieval solution 1) for 20 mins. The section was then incubated with ab112993, 5µg/ml, for 15 mins at room temperature and detected using an HRP conjugated compact polymer system. DAB was used as the chromogen. The section was then counterstained with haematoxylin and mounted with DPX.

For other IHC staining systems (automated and non-automated) customers should optimize variable parameters such as antigen retrieval conditions, primary antibody concentration and antibody incubation times.



Western blot - Anti-BAP31 antibody [7A3BB6] (ab112993)

All lanes : Anti-BAP31 antibody [7A3BB6] (ab112993) at 0.5 µg/ml

Lane 1 : HepG2 Cell Lysate

Lane 2 : H9C2 Cell Lysate

Lane 3 : MEF Cell Lysate

Predicted band size: 28 kDa

Please note: All products are "FOR RESEARCH USE ONLY. NOT FOR USE IN DIAGNOSTIC PROCEDURES"

Our Abpromise to you: Quality guaranteed and expert technical support

- Replacement or refund for products not performing as stated on the datasheet
- Valid for 12 months from date of delivery
- Response to your inquiry within 24 hours
- We provide support in Chinese, English, French, German, Japanese and Spanish
- Extensive multi-media technical resources to help you
- We investigate all quality concerns to ensure our products perform to the highest standards

If the product does not perform as described on this datasheet, we will offer a refund or replacement. For full details of the Abpromise, please visit <https://www.abcam.co.jp/abpromise> or contact our technical team.

Terms and conditions

- Guarantee only valid for products bought direct from Abcam or one of our authorized distributors