

Anti-BAP29 antibody ab62571

画像数 3

製品の概要

製品名	Anti-BAP29 antibody
製品の詳細	Rabbit polyclonal to BAP29
由来種	Rabbit
アプリケーション	適用あり: IHC-P, WB, ICC/IF
種交差性	交差種: Human
免疫原	A 17 amino acid peptide from near the center of human BAP29
ポジティブ・コントロール	Human heart tissue lysate and human heart tissue.
特記事項	<p>The Life Science industry has been in the grips of a reproducibility crisis for a number of years. Abcam is leading the way in addressing this with our range of recombinant monoclonal antibodies and knockout edited cell lines for gold-standard validation. Please check that this product meets your needs before purchasing.</p> <p>If you have any questions, special requirements or concerns, please send us an inquiry and/or contact our Support team ahead of purchase. Recommended alternatives for this product can be found below, along with publications, customer reviews and Q&As</p>

製品の特性

製品の状態	Liquid
保存方法	Shipped at 4°C. Store at +4°C.
バッファー	pH: 7.2 Preservative: 0.02% Sodium azide Constituent: PBS
精製度	Immunogen affinity purified
ポリ/モノ	ポリクローナル
アイソタイプ	IgG

アプリケーション

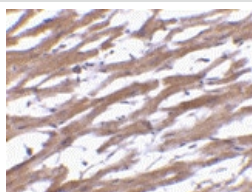
The Abpromise guarantee **Abpromise保証は、** 次のテスト済みアプリケーションにおけるab62571の使用に適用されます
アプリケーションノートには、推奨の開始希釈率がありますが、適切な希釈率につきましてはご検討ください。

アプリケーション	Abreviews	特記事項
IHC-P		Use a concentration of 10 µg/ml.
WB		Use a concentration of 0.5 - 1 µg/ml. Detects a band of approximately 27 kDa (predicted molecular weight: 27 kDa).
ICC/IF		Use a concentration of 20 µg/ml.

ターゲット情報

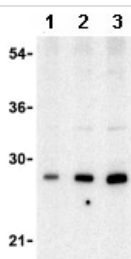
機能	May play a role in anterograde transport of membrane proteins from the endoplasmic reticulum to the Golgi. May be involved in CASP8-mediated apoptosis.
配列類似性	Belongs to the BCAP29/BCAP31 family.
細胞内局在	Endoplasmic reticulum membrane.

画像



Immunohistochemistry (Formalin/PFA-fixed paraffin-embedded sections) - Anti-BAP29 antibody (ab62571)

ab62571 at 10µg/ml staining BAP29 in paraffin embedded human heart tissue section by Immunohistochemistry.



Western blot - Anti-BAP29 antibody (ab62571)

Lane 1 : Anti-BAP29 antibody (ab62571) at 0.5 µg/ml

Lane 2 : Anti-BAP29 antibody (ab62571) at 1 µg/ml

Lane 3 : Anti-BAP29 antibody (ab62571) at 2 µg/ml

All lanes : human heart tissue lysate

Lysates/proteins at 15 µg per lane.

Predicted band size: 27 kDa

Observed band size: 27 kDa

Immunocytochemistry/ Immunofluorescence - Anti-BAP29 antibody (ab62571)

Immunofluorescence of BAP29 in Human Heart cells using ab62571 at 20 ug/ml.

Please note: All products are "FOR RESEARCH USE ONLY. NOT FOR USE IN DIAGNOSTIC PROCEDURES"

Our Abpromise to you: Quality guaranteed and expert technical support

- Replacement or refund for products not performing as stated on the datasheet
- Valid for 12 months from date of delivery
- Response to your inquiry within 24 hours
- We provide support in Chinese, English, French, German, Japanese and Spanish
- Extensive multi-media technical resources to help you
- We investigate all quality concerns to ensure our products perform to the highest standards

If the product does not perform as described on this datasheet, we will offer a refund or replacement. For full details of the Abpromise, please visit <https://www.abcam.co.jp/abpromise> or contact our technical team.

Terms and conditions

- Guarantee only valid for products bought direct from Abcam or one of our authorized distributors