


Anti-BANP antibody ab72076

画像数 3

製品の概要

製品名	Anti-BANP antibody
製品の詳細	Rabbit polyclonal to BANP
由来種	Rabbit
アプリケーション	適用あり: IHC-P, WB
種交差性	交差種: Mouse, Human 交差が予測される動物種: Rabbit, Horse, Guinea pig, Cow, Dog, Chimpanzee, Rhesus monkey, Chinese hamster, Orangutan 
免疫原	Synthetic peptide corresponding to a region between residue 425 and the C-terminus (residue 469) of human BANP (TrEMBL entry Q96GJ7)
特記事項	<p>The Life Science industry has been in the grips of a reproducibility crisis for a number of years. Abcam is leading the way in addressing this with our range of recombinant monoclonal antibodies and knockout edited cell lines for gold-standard validation. Please check that this product meets your needs before purchasing.</p> <p>If you have any questions, special requirements or concerns, please send us an inquiry and/or contact our Support team ahead of purchase. Recommended alternatives for this product can be found below, along with publications, customer reviews and Q&As</p>

製品の特性

製品の状態	Liquid
保存方法	Shipped at 4°C. Upon delivery aliquot and store at -20°C. Avoid freeze / thaw cycles.
バッファー	pH: 7 Preservative: 0.09% Sodium azide Constituents: 1.815% Tris, 1.764% Sodium citrate, 0.021% PBS
精製度	Immunogen affinity purified
ポリ/モノ	ポリクローナル
アイソタイプ	IgG

アプリケーション

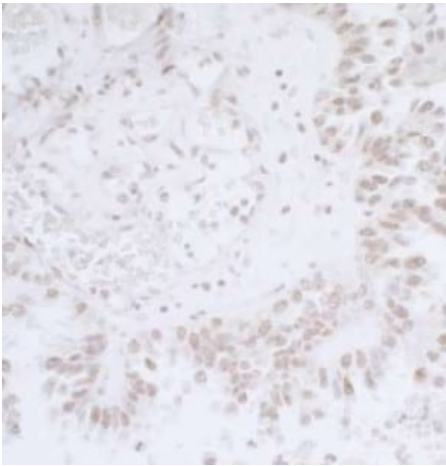
The Abpromise guarantee **Abpromise保証は、**次のテスト済みアプリケーションにおけるab72076の使用に適用されます
アプリケーションノートには、推奨の開始希釈率がありますが、適切な希釈率につきましてはご検討ください。

アプリケーション	Abreviews	特記事項
IHC-P		1/2000 - 1/10000.
WB		1/10000 - 1/25000. Predicted molecular weight: 59 kDa.

ターゲット情報

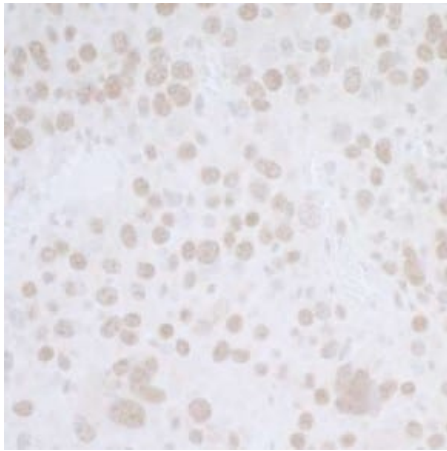
機能	Controls V(D)J recombination during T-cell development by repressing T-cell receptor (TCR) beta enhancer function. Binds to scaffold/matrix attachment region beta (S/MARbeta), an ATC-rich DNA sequence located upstream of the TCR beta enhancer. Represses cyclin D1 transcription by recruiting HDAC1 to its promoter, thereby diminishing H3K9ac, H3S10ph and H4K8ac levels. Promotes TP53 'Ser-15' phosphorylation and nuclear accumulation, which causes cell cycle arrest.
組織特異性	Down-regulated in breast cancer cell lines.
配列類似性	Belongs to the BANP/SMAR1 family. Contains 1 BEN domain.
細胞内局在	Nucleus.

画像



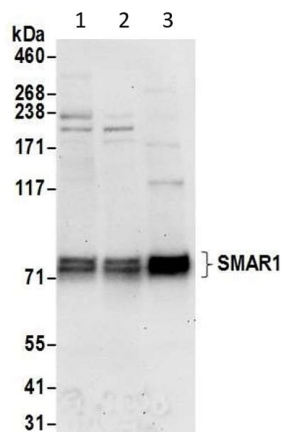
Immunohistochemistry (Formalin/PFA-fixed paraffin-embedded sections) - Anti-BANP antibody (ab72076)

Immunohistochemistry (Formalin/PFA-fixed paraffin-embedded sections) analysis of mouse renal cell tissue labelling BANP with ab72076 at 1/5000 (0.2µg/ml). Setection: DAB.



Immunohistochemistry (Formalin/PFA-fixed paraffin-embedded sections) analysis of human lung carcinoma tissue labelling BANP with ab72076 at 1/5000 (0.2µg/ml). Setection: DAB.

Immunohistochemistry (Formalin/PFA-fixed paraffin-embedded sections) - Anti-BANP antibody (ab72076)



All lanes : Anti-BANP antibody (ab72076) at 0.1 µg/ml

Lane 1 : HeLa whole cell lysate

Lane 2 : HEK293T whole cell lysate

Lane 3 : NIH 3T3 whole cell lysate

Lysates/proteins at 50 µg per lane.

Predicted band size: 59 kDa

Western blot - Anti-BANP antibody (ab72076)

Please note: All products are "FOR RESEARCH USE ONLY. NOT FOR USE IN DIAGNOSTIC PROCEDURES"

Our Abpromise to you: Quality guaranteed and expert technical support

- Replacement or refund for products not performing as stated on the datasheet
- Valid for 12 months from date of delivery
- Response to your inquiry within 24 hours
- We provide support in Chinese, English, French, German, Japanese and Spanish
- Extensive multi-media technical resources to help you

- We investigate all quality concerns to ensure our products perform to the highest standards

If the product does not perform as described on this datasheet, we will offer a refund or replacement. For full details of the Abpromise, please visit <https://www.abcam.co.jp/abpromise> or contact our technical team.

Terms and conditions

- Guarantee only valid for products bought direct from Abcam or one of our authorized distributors