




Anti-Bad (phospho S99) antibody ab28824

★★★★★ [1 Abreviews](#) [13 References](#) [画像数 2](#)

製品の概要

製品名	Anti-Bad (phospho S99) antibody
製品の詳細	Rabbit polyclonal to Bad (phospho S99)
由来種	Rabbit
特異性	Predicted to react with Mouse S136 and Rat S137
アプリケーション	適用あり: IHC-P, WB
種交差性	交差種: Human 交差が予測される動物種: Mouse, Rat 
免疫原	<p>Synthetic peptide within Human Bad (phospho S99). The exact immunogen sequence used to generate this antibody is proprietary information. If additional detail on the immunogen is needed to determine the suitability of the antibody for your needs, please contact our Scientific Support team to discuss your requirements.</p> <p>Database link: Q92934</p> <div>  Run BLAST with  Run BLAST with </div>
特記事項	<p>The Life Science industry has been in the grips of a reproducibility crisis for a number of years. Abcam is leading the way in addressing this with our range of recombinant monoclonal antibodies and knockout edited cell lines for gold-standard validation. Please check that this product meets your needs before purchasing.</p> <p>If you have any questions, special requirements or concerns, please send us an inquiry and/or contact our Support team ahead of purchase. Recommended alternatives for this product can be found below, along with publications, customer reviews and Q&As</p>

製品の特性

製品の状態	Liquid
保存方法	Shipped at 4°C. Store at +4°C short term (1-2 weeks). Upon delivery aliquot. Store at -20°C long term.
バッファー	<p>pH: 7.40</p> <p>Preservative: 0.02% Sodium azide</p> <p>Constituents: 50% Glycerol (glycerin, glycerine), 0.87% Sodium chloride</p> <p>Without Mg2+ and Ca2+</p>

精製度	Immunogen affinity purified
特記事項(精製)	The antibody was affinity purified from rabbit antiserum by affinity chromatography using epitope specific phosphopeptide. The antibody against non phosphopeptide was removed by chromatography using non phosphopeptide corresponding to the phosphorylation site.
ポリ/モノ	ポリクローナル
アイソタイプ	IgG

アプリケーション

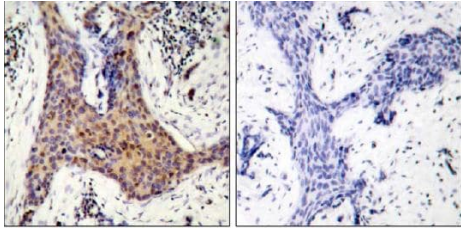
The Abpromise guarantee Abpromise保証は、次のテスト済みアプリケーションにおけるab28824の使用に適用されます
 アプリケーションノートには、推奨の開始希釈率がありますが、適切な希釈率につきましてはご検討ください。

アプリケーション	Abreviews	特記事項
IHC-P		Use at an assay dependent concentration.
WB		1/500 - 1/1000. Predicted molecular weight: 19 kDa.

ターゲット情報

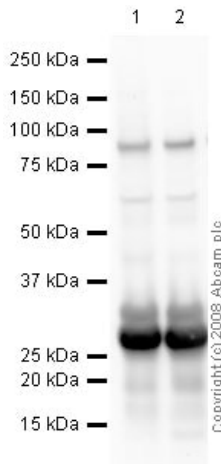
機能	Promotes cell death. Successfully competes for the binding to Bcl-X(L), Bcl-2 and Bcl-W, thereby affecting the level of heterodimerization of these proteins with BAX. Can reverse the death repressor activity of Bcl-X(L), but not that of Bcl-2 (By similarity). Appears to act as a link between growth factor receptor signaling and the apoptotic pathways.
組織特異性	Expressed in a wide variety of tissues.
配列類似性	Belongs to the Bcl-2 family.
ドメイン	Intact BH3 motif is required by BIK, BID, BAK, BAD and BAX for their pro-apoptotic activity and for their interaction with anti-apoptotic members of the Bcl-2 family.
翻訳後修飾	Phosphorylated on one or more of Ser-75, Ser-99, Ser-118 and Ser-134 in response to survival stimuli, which blocks its pro-apoptotic activity. Phosphorylation on Ser-99 or Ser-75 promotes heterodimerization with 14-3-3 proteins. This interaction then facilitates the phosphorylation at Ser-118, a site within the BH3 motif, leading to the release of Bcl-X(L) and the promotion of cell survival. Ser-99 is the major site of AKT/PKB phosphorylation, Ser-118 the major site of protein kinase A (CAPK) phosphorylation. Ser-75 is phosphorylated by AKT/PKB, protein kinase A and PIM2.
細胞内局在	Mitochondrion outer membrane. Cytoplasm. Upon phosphorylation, locates to the cytoplasm.

画像



Immunohistochemistry (Formalin/PFA-fixed paraffin-embedded sections) - Anti-Bad (phospho S99) antibody (ab28824)

Immunohistochemical analysis of paraffin embedded breast carcinoma, using ab28824. Left: Untreated. Right: Treated with synthesized phosphopeptide.



Western blot - Anti-Bad (phospho S99) antibody (ab28824)

All lanes : Anti-Bad (phospho S99) antibody (ab28824) at 1/500 dilution

Lane 1 : MOLT4 (Human acute lymphoblastic leukemia cell line) Whole Cell Lysate

Lane 2 : U2OS (Human osteosarcoma cell line) Whole Cell Lysate

Lysates/proteins at 10 µg per lane.

Secondary

All lanes : Goat polyclonal to Rabbit IgG - H&L - Pre-Adsorbed (HRP) at 1/3000 dilution

Predicted band size: 19 kDa

Observed band size: 26 kDa

Please note: All products are "FOR RESEARCH USE ONLY. NOT FOR USE IN DIAGNOSTIC PROCEDURES"

Our Abpromise to you: Quality guaranteed and expert technical support

- Replacement or refund for products not performing as stated on the datasheet
- Valid for 12 months from date of delivery
- Response to your inquiry within 24 hours
- We provide support in Chinese, English, French, German, Japanese and Spanish
- Extensive multi-media technical resources to help you
- We investigate all quality concerns to ensure our products perform to the highest standards

If the product does not perform as described on this datasheet, we will offer a refund or replacement. For full details of the Abpromise, please visit <https://www.abcam.co.jp/abpromise> or contact our technical team.

Terms and conditions

- Guarantee only valid for products bought direct from Abcam or one of our authorized distributors