

# Anti-BACE1 antibody ab10716

**6 References** [画像数 4](#)

### 製品の概要

製品名	Anti-BACE1 antibody
製品の詳細	Rabbit polyclonal to BACE1
由来種	Rabbit
特異性	Detects transfected beta-secretase 1.
アプリケーション	<b>適用あり:</b> WB, ICC/IF
種交差性	<b>交差種:</b> Mouse, Human <b>交差が予測される動物種:</b> Guinea pig, Cow 
免疫原	Synthetic peptide corresponding to Human BACE1 aa 485-501 (C terminal). Sequence: CLRQHQHDDFADDISLLK  (Peptide available as <a href="#">ab7883</a> ) <a href="#">Run BLAST with</a> <a href="#">Run BLAST with</a>
ポジティブ・コントロール	WB: U87-MG, HeLa and Mouse brain cell lysate. ICC/IF: SH-SY5Y cells, Neuro-2a cells, HeLa cells.
特記事項	<p>The Life Science industry has been in the grips of a reproducibility crisis for a number of years. Abcam is leading the way in addressing this with our range of recombinant monoclonal antibodies and knockout edited cell lines for gold-standard validation. Please check that this product meets your needs before purchasing.</p> <p>If you have any questions, special requirements or concerns, please send us an inquiry and/or contact our Support team ahead of purchase. Recommended alternatives for this product can be found below, along with publications, customer reviews and Q&amp;As</p>

### 製品の特性

製品の状態	Liquid
保存方法	Shipped at 4°C. Store at +4°C short term (1-2 weeks). Upon delivery aliquot. Store at -20°C or -80°C. Avoid freeze / thaw cycle.
バッファー	Preservative: 0.05% Sodium azide Constituents: 99% PBS, 0.1% BSA
精製度	Immunogen affinity purified

ポリ/モノ  
アイソタイプ

ポリクローナル  
IgG

## アプリケーション

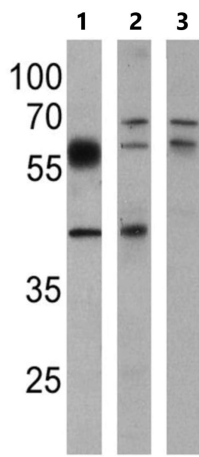
**The Abpromise guarantee** **Abpromise保証は、次のテスト済みアプリケーションにおけるab10716の使用に適用されず**  
アプリケーションノートには、推奨の開始希釈率がありますが、適切な希釈率につきましてはご検討ください。

アプリケーション	Abreviews	特記事項
WB		1/1000. Predicted molecular weight: 56 kDa.
ICC/IF		1/20 - 1/200.

## ターゲット情報

機能	Responsible for the proteolytic processing of the amyloid precursor protein (APP). Cleaves at the N-terminus of the A-beta peptide sequence, between residues 671 and 672 of APP, leads to the generation and extracellular release of beta-cleaved soluble APP, and a corresponding cell-associated C-terminal fragment which is later released by gamma-secretase.
組織特異性	Expressed at high levels in the brain and pancreas. In the brain, expression is highest in the substantia nigra, locus coeruleus and medulla oblongata.
配列類似性	Belongs to the peptidase A1 family.
ドメイン	The transmembrane domain is necessary for its activity. It determines its late Golgi localization and access to its substrate, APP.
翻訳後修飾	Glycosylated.
細胞内局在	Membrane. Golgi apparatus > trans-Golgi network. Endoplasmic reticulum. Endosome. Cell surface. Predominantly localized to the later Golgi/trans-Golgi network (TGN) and minimally detectable in the early Golgi compartments. A small portion is also found in the endoplasmic reticulum, endosomes and on the cell surface.

## 画像



Western blot - Anti-BACE1 antibody (ab10716)

**All lanes :** Anti-BACE1 antibody (ab10716) at 1/1000 dilution

**Lane 1 :** U87-MG cell lysate

**Lane 2 :** HeLa cell lysate

**Lane 3 :** Mouse brain cell lysate

Lysates/proteins at 25 µg per lane.

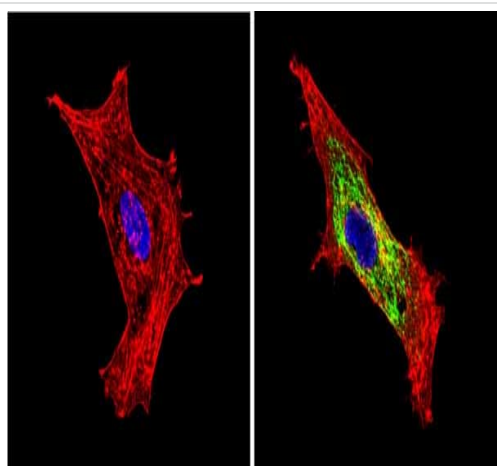
**Secondary**

**All lanes :** HRP-conjugated secondary antibody

**Predicted band size:** 56 kDa

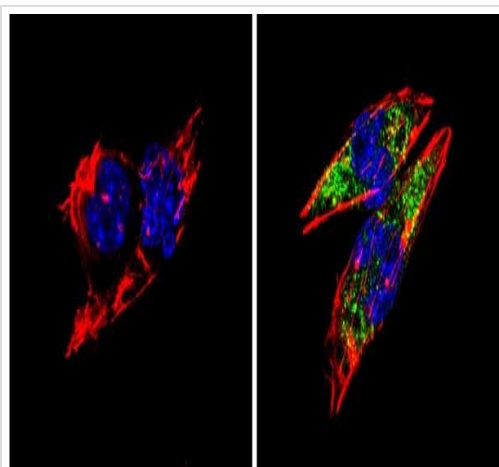
**Observed band size:** 42,56,70 kDa

Western blot analysis of BACE1 was performed by loading Samples onto an SDS polyacrylamide gel. Proteins were transferred to a PVDF membrane and blocked at 4°C overnight. The membrane was probed with primary antibody overnight at 4°C, washed in TBST, and probed with secondary antibody for 1 hour at room temperature in the dark. Chemiluminescent detection was performed using Pierce ECL Plus Western Blotting Substrate.



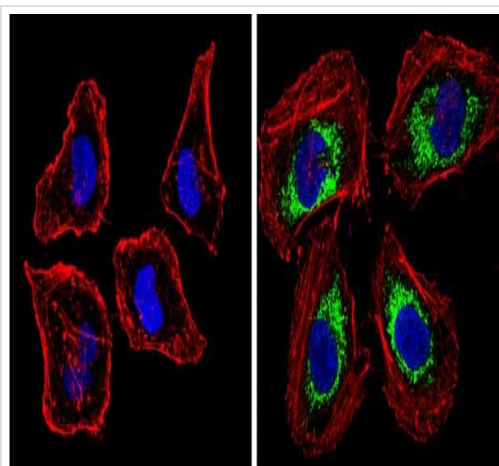
Immunocytochemistry/ Immunofluorescence - Anti-BACE1 antibody (ab10716)

Immunocytochemistry/Immunofluorescent analysis of BACE1 (green) showing staining in the Golgi apparatus of SH-SY5Y cells. Formalin-fixed cells were permeabilized with 0.1% Triton X-100 in TBS for 5-10 minutes and blocked with 3% BSA-PBS for 30 minutes at room temperature. Cells were probed with a10716 in 3% BSA-PBS at a dilution of 1/100 and incubated overnight at 4°C in a humidified chamber. Cells were washed with PBST and incubated with a DyLight-conjugated secondary antibody in PBS at room temperature in the dark. F-actin (red) was stained with a fluorescent red phalloidin and nuclei (blue) were stained with Hoechst or DAPI. Images were taken at a magnification of 60x.



Immunocytochemistry/ Immunofluorescence - Anti-BACE1 antibody (ab10716)

Immunocytochemistry/Immunofluorescent analysis of BACE1 (green) showing staining in the Golgi apparatus of Neuro-2a cells. Formalin-fixed cells were permeabilized with 0.1% Triton X-100 in TBS for 5-10 minutes and blocked with 3% BSA-PBS for 30 minutes at room temperature. Cells were probed with ab10716 in 3% BSA-PBS at a dilution of 1/100 and incubated overnight at 4°C in a humidified chamber. Cells were washed with PBST and incubated with a DyLight-conjugated secondary antibody in PBS at room temperature in the dark. F-actin (red) was stained with a fluorescent red phalloidin and nuclei (blue) were stained with Hoechst or DAPI. Images were taken at a magnification of 60x.



Immunocytochemistry/ Immunofluorescence - Anti-BACE1 antibody (ab10716)

Immunocytochemistry/Immunofluorescent analysis of BACE1 (green) showing staining in the Golgi apparatus of HeLa cells. Formalin-fixed cells were permeabilized with 0.1% Triton X-100 in TBS for 5-10 minutes and blocked with 3% BSA-PBS for 30 minutes at room temperature. Cells were probed with ab10716 in 3% BSA-PBS at a dilution of 1/100 and incubated overnight at 4°C in a humidified chamber. Cells were washed with PBST and incubated with a DyLight-conjugated secondary antibody in PBS at room temperature in the dark. F-actin (red) was stained with a fluorescent red phalloidin and nuclei (blue) were stained with Hoechst or DAPI. Images were taken at a magnification of 60x.

**Please note:** All products are "FOR RESEARCH USE ONLY. NOT FOR USE IN DIAGNOSTIC PROCEDURES"

### Our Promise to you: Quality guaranteed and expert technical support

- Replacement or refund for products not performing as stated on the datasheet
- Valid for 12 months from date of delivery
- Response to your inquiry within 24 hours
- We provide support in Chinese, English, French, German, Japanese and Spanish

- Extensive multi-media technical resources to help you
- We investigate all quality concerns to ensure our products perform to the highest standards

If the product does not perform as described on this datasheet, we will offer a refund or replacement. For full details of the Abpromise, please visit <https://www.abcam.co.jp/abpromise> or contact our technical team.

### **Terms and conditions**

---

- Guarantee only valid for products bought direct from Abcam or one of our authorized distributors