


Anti-B4GALT3 antibody ab74825

1 [References](#) **2** [画像数](#)

製品の概要

製品名	Anti-B4GALT3 antibody
製品の詳細	Rabbit polyclonal to B4GALT3
由来種	Rabbit
アプリケーション	適用あり: WB, IHC-P
種交差性	交差種: Human 交差が予測される動物種: Mouse, Rat 
免疫原	Synthesized peptide derived from an internal region of human B4GALT3
ポジティブ・コントロール	WB: extracts from HepG2 cells, HeLa cells and Jurkat cells IHC-P: human liver carcinoma tissue
特記事項	<p>The Life Science industry has been in the grips of a reproducibility crisis for a number of years. Abcam is leading the way in addressing this with our range of recombinant monoclonal antibodies and knockout edited cell lines for gold-standard validation. Please check that this product meets your needs before purchasing.</p> <p>If you have any questions, special requirements or concerns, please send us an inquiry and/or contact our Support team ahead of purchase. Recommended alternatives for this product can be found below, along with publications, customer reviews and Q&As</p>

製品の特性

製品の状態	Liquid
保存方法	Shipped at 4°C. Upon delivery aliquot and store at -20°C. Avoid freeze / thaw cycles.
バッファー	<p>pH: 7.40</p> <p>Preservative: 0.02% Sodium azide</p> <p>Constituents: 50% Glycerol (glycerin, glycerine), 0.87% Sodium chloride, PBS</p> <p>Without Mg2+ and Ca2+</p>
精製度	Immunogen affinity purified
特記事項 (精製)	The antibody was affinity purified from rabbit antiserum by affinity chromatography using epitope specific immunogen.
ポリ/モノ	ポリクローナル
アイソタイプ	IgG

アプリケーション

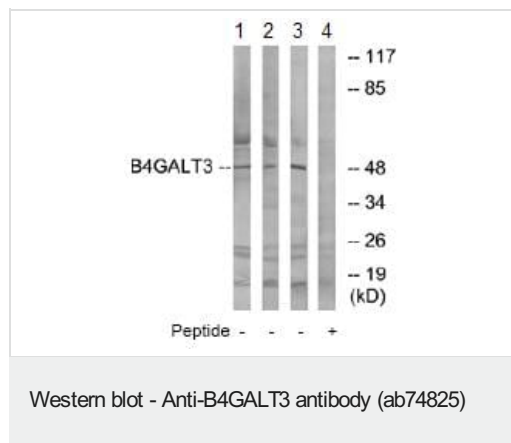
The Abpromise guarantee Abpromise保証は、 次のテスト済みアプリケーションにおけるab74825の使用に適用されます
アプリケーションノートには、推奨の開始希釈率がありますが、適切な希釈率につきましてはご検討ください。

アプリケーション	Abreviews	特記事項
WB		1/500 - 1/1000. Predicted molecular weight: 44 kDa.
IHC-P		Use at an assay dependent concentration.

ターゲット情報

機能	Responsible for the synthesis of complex-type N-linked oligosaccharides in many glycoproteins as well as the carbohydrate moieties of glycolipids.
組織特異性	Found in various tissues. Highest expression in placenta, prostate, testis, ovary, intestine and muscle, and in fetal brain.
パスウェイ	Protein modification; protein glycosylation.
配列類似性	Belongs to the glycosyltransferase 7 family.
細胞内局在	Golgi apparatus > Golgi stack membrane. Trans cisternae of Golgi stack.

画像



All lanes : Anti-B4GALT3 antibody (ab74825) at 1/500 dilution

Lane 1 : extracts from HepG2 cells

Lane 2 : extracts from HeLa cells

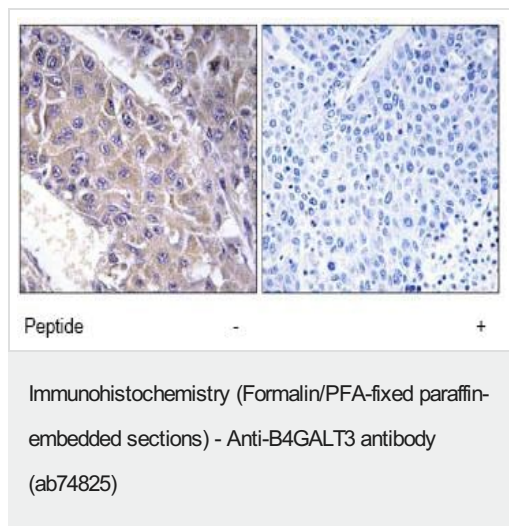
Lane 3 : extracts from Jurkat cells

Lane 4 : extracts from Jurkat cells with immunizing peptide at 10 µg

Lysates/proteins at 30 µg per lane.

Predicted band size: 44 kDa

Observed band size: 44 kDa



ab74825, at a dilution of 1/50, staining B4GALT3 in paraffin embedded human liver carcinoma tissue sections by Immunohistochemistry in the absence (left image) or presence (right image) of the immunizing peptide.

Please note: All products are "FOR RESEARCH USE ONLY. NOT FOR USE IN DIAGNOSTIC PROCEDURES"

Our Abpromise to you: Quality guaranteed and expert technical support

- Replacement or refund for products not performing as stated on the datasheet
- Valid for 12 months from date of delivery
- Response to your inquiry within 24 hours
- We provide support in Chinese, English, French, German, Japanese and Spanish
- Extensive multi-media technical resources to help you
- We investigate all quality concerns to ensure our products perform to the highest standards

If the product does not perform as described on this datasheet, we will offer a refund or replacement. For full details of the Abpromise, please visit <https://www.abcam.co.jp/abpromise> or contact our technical team.

Terms and conditions

- Guarantee only valid for products bought direct from Abcam or one of our authorized distributors