

Anti-B1R antibody ab77366

画像数 1

製品の概要

製品名	Anti-B1R antibody
製品の詳細	Goat polyclonal to B1R
由来種	Goat
アプリケーション	適用あり: WB
種交差性	交差種: Human 交差が予測される動物種: Cynomolgus monkey, Rhesus monkey 
免疫原	Synthetic peptide corresponding to Human B1R (internal sequence). Sequence: KVVWELYKQCTPK Database link: NP_000701.2  Run BLAST with  Run BLAST with
ポジティブ・コントロール	Daudi, K562 and U937 cell lysates
特記事項	<p>The Life Science industry has been in the grips of a reproducibility crisis for a number of years. Abcam is leading the way in addressing this with our range of recombinant monoclonal antibodies and knockout edited cell lines for gold-standard validation. Please check that this product meets your needs before purchasing.</p> <p>If you have any questions, special requirements or concerns, please send us an inquiry and/or contact our Support team ahead of purchase. Recommended alternatives for this product can be found below, along with publications, customer reviews and Q&As</p>

製品の特性

製品の状態	Liquid
保存方法	Shipped at 4°C. Upon delivery aliquot and store at -20°C. Avoid freeze / thaw cycles.
バッファー	pH: 7.30 Preservative: 0.02% Sodium azide Constituents: 0.5% BSA, Tris buffered saline
精製度	Immunogen affinity purified
特記事項 (精製)	Purified from goat serum by ammonium sulphate precipitation followed by antigen affinity chromatography using the immunizing peptide.

ポリ/モノ
アイソタイプ

ポリクローナル
IgG

アプリケーション

The Abpromise guarantee Abpromise保証は、次のテスト済みアプリケーションにおけるab77366の使用に適用されず
アプリケーションノートには、推奨の開始希釈率がありますが、適切な希釈率につきましてはご確認ください。

アプリケーション	Abreviews	特記事項
WB		

追加情報

Peptide ELISA: Antibody detection limit dilution 1/1000.
WB: Use at a concentration of 2 - 4 µg/ml. Predicted molecular weight: 40 kDa.

Not yet tested in other applications.
Optimal dilutions/concentrations should be determined by the end user.

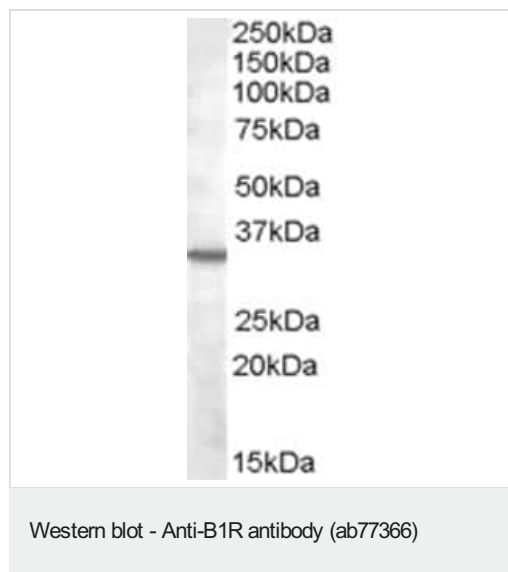
ターゲット情報

機能 This is a receptor for bradykinin. Could be a factor in chronic pain and inflammation.

配列類似性 Belongs to the G-protein coupled receptor 1 family. Bradykinin receptor subfamily. BDKRB1 sub-subfamily.

細胞内局在 Cell membrane.

画像



Anti-B1R antibody (ab77366) at 2 µg/ml + K562 lysate in RIPA buffer at 35 µg

Predicted band size: 40 kDa

Observed band size: 35 kDa

Please note: All products are "FOR RESEARCH USE ONLY. NOT FOR USE IN DIAGNOSTIC PROCEDURES"

Our Abpromise to you: Quality guaranteed and expert technical support

- Replacement or refund for products not performing as stated on the datasheet
- Valid for 12 months from date of delivery
- Response to your inquiry within 24 hours

- We provide support in Chinese, English, French, German, Japanese and Spanish
- Extensive multi-media technical resources to help you
- We investigate all quality concerns to ensure our products perform to the highest standards

If the product does not perform as described on this datasheet, we will offer a refund or replacement. For full details of the Abpromise, please visit <https://www.abcam.co.jp/abpromise> or contact our technical team.

Terms and conditions

- Guarantee only valid for products bought direct from Abcam or one of our authorized distributors