

Anti-B Cell antibody [CA2.1D6] ab34125

1 References [画像数 1](#)

製品の概要

製品名	Anti-B Cell antibody [CA2.1D6]
製品の詳細	Mouse monoclonal [CA2.1D6] to B Cell
由来種	Mouse
特異性	This antibody is specific for a cell surface antigen expressed by canine B lymphocytes.
アプリケーション	適用あり: Flow Cyt 適用なし: IHC-P
種交差性	交差種: Horse, Cat, Dog
免疫原	The details of the immunogen for this antibody are not available.
特記事項	<p>The Life Science industry has been in the grips of a reproducibility crisis for a number of years. Abcam is leading the way in addressing this with our range of recombinant monoclonal antibodies and knockout edited cell lines for gold-standard validation. Please check that this product meets your needs before purchasing.</p> <p>If you have any questions, special requirements or concerns, please send us an inquiry and/or contact our Support team ahead of purchase. Recommended alternatives for this product can be found below, along with publications, customer reviews and Q&As</p>

製品の特性

製品の状態	Liquid
保存方法	Shipped at 4°C. Store at +4°C short term (1-2 weeks). Upon delivery aliquot. Store at -20°C long term.
バッファー	pH: 7.40 Preservative: 0.09% Sodium azide Constituent: PBS
精製度	Protein G purified
ポリ/モノ	モノクローナル
クローン名	CA2.1D6
アイソタイプ	IgG1

アプリケーション

The Abpromise guarantee

Abpromise保証は、次のテスト済みアプリケーションにおけるab34125の使用に適用されます

アプリケーションノートには、推奨の開始希釈率がありますが、適切な希釈率につきましてはご検討ください。

アプリケーション	Abreviews	特記事項
Flow Cyt		

追加情報

FACS: 1/100. Use 10ul of the suggested working dilution to label 10^6 cells or 100ul whole blood.

IHC-Fr: Use at an assay dependent dilution.

IP: Use at an assay dependent dilution.

Is unsuitable for IHC-P.

Not yet tested in other applications.

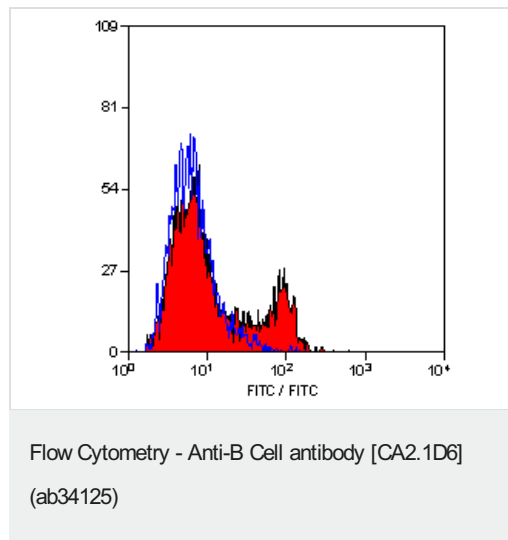
Optimal dilutions/concentrations should be determined by the end user.

ターゲット情報

関連性

B cells are lymphocytes that are produced in the bone marrow and require bone marrow stromal cells and their cytokines for maturation. During its development, each B cell becomes genetically programmed through a series of gene splicing reactions to produce an antibody molecule with a unique specificity.

画像



ab34125 at a 1/100 dilution staining canine peripheral blood lymphocytes using FACS. 10ul of 1/100 dilution to label 10^6 cells or 100ul whole blood.

Please note: All products are "FOR RESEARCH USE ONLY. NOT FOR USE IN DIAGNOSTIC PROCEDURES"

Our Abpromise to you: Quality guaranteed and expert technical support

- Replacement or refund for products not performing as stated on the datasheet

- Valid for 12 months from date of delivery
- Response to your inquiry within 24 hours
- We provide support in Chinese, English, French, German, Japanese and Spanish
- Extensive multi-media technical resources to help you
- We investigate all quality concerns to ensure our products perform to the highest standards

If the product does not perform as described on this datasheet, we will offer a refund or replacement. For full details of the Abpromise, please visit <https://www.abcam.co.jp/abpromise> or contact our technical team.

Terms and conditions

- Guarantee only valid for products bought direct from Abcam or one of our authorized distributors