


Anti-Aurora B antibody ab70238

3 References [画像数 3](#)

製品の概要

製品名	Anti-Aurora B antibody
製品の詳細	Rabbit polyclonal to Aurora B
由来種	Rabbit
アプリケーション	適用あり: WB, IP, ICC
種交差性	交差種: Human 交差が予測される動物種: Chimpanzee, Rhesus monkey, Gorilla, Orangutan 
免疫原	Synthetic peptide corresponding to a region between residue 300 and the C-terminus (residue 344) of Human Aurora B (Swiss-Prot Q96GD4).
ポジティブ・コントロール	IP: Lysate from nocodazole treated HeLa cells; WB: Lysates from nocodazole treated HeLa cells; ICC: HeLa cells.
特記事項	<p>The Life Science industry has been in the grips of a reproducibility crisis for a number of years. Abcam is leading the way in addressing this with our range of recombinant monoclonal antibodies and knockout edited cell lines for gold-standard validation. Please check that this product meets your needs before purchasing.</p> <p>If you have any questions, special requirements or concerns, please send us an inquiry and/or contact our Support team ahead of purchase. Recommended alternatives for this product can be found below, along with publications, customer reviews and Q&As</p>

製品の特性

製品の状態	Liquid
保存方法	Shipped at 4°C. Upon delivery aliquot and store at -20°C. Avoid freeze / thaw cycles.
バッファー	pH: 7 Preservative: 0.09% Sodium azide Constituents: 1.815% Tris, 1.764% Sodium citrate, 0.021% PBS
精製度	Immunogen affinity purified
ポリ/モノ	ポリクローナル
アイソタイプ	IgG

アプリケーション

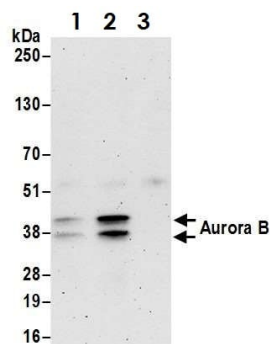
The Abpromise guarantee **Abpromise保証は、次のテスト済みアプリケーションにおけるab70238の使用に適用されます**
 アプリケーションノートには、推奨の開始希釈率がありますが、適切な希釈率につきましてはご検討ください。

アプリケーション	Abreviews	特記事項
WB		1/5000 - 1/15000. Detects a band of approximately 39 kDa (predicted molecular weight: 39 kDa).
IP		Use at 2-10 µg/mg of lysate.
ICC		1/500 - 1/2000.

ターゲット情報

機能	May be directly involved in regulating the cleavage of polar spindle microtubules and is a key regulator for the onset of cytokinesis during mitosis. Component of the chromosomal passenger complex (CPC), a complex that acts as a key regulator of mitosis. The CPC complex has essential functions at the centromere in ensuring correct chromosome alignment and segregation and is required for chromatin-induced microtubule stabilization and spindle assembly. Phosphorylates 'Ser-10' and 'Ser-28' of histone H3 during mitosis. Required for kinetochore localization of BUB1 and SGOL1. Interacts with INCENP.
組織特異性	High level expression seen in the thymus. It is also expressed in the spleen, lung, testis, colon, placenta and fetal liver. Expressed during S and G2/M phase and expression is up-regulated in cancer cells during M phase.
関連疾患	Note=Disruptive regulation of expression is a possible mechanism of the perturbation of chromosomal integrity in cancer cells through its dominant-negative effect on cytokinesis.
配列類似性	Belongs to the protein kinase superfamily. Ser/Thr protein kinase family. Aurora subfamily. Contains 1 protein kinase domain.
翻訳後修飾	Ubiquitinated by different BCR (BTB-CUL3-RBX1) E3 ubiquitin ligase complexes. Ubiquitinated by the BCR(KLHL9-KLHL13) E3 ubiquitin ligase complex, ubiquitination leads to removal from mitotic chromosomes and is required for cytokinesis. During anaphase, the BCR(KLHL21) E3 ubiquitin ligase complex recruits the CPC complex from chromosomes to the spindle midzone and mediates the ubiquitination of AURKB. Ubiquitination of AURKB by BCR(KLHL21) E3 ubiquitin ligase complex may not lead to its degradation by the proteasome.
細胞内局在	Nucleus. Chromosome. Chromosome > centromere. Cytoplasm > cytoskeleton > spindle. Localizes on chromosome arms and inner centromeres from prophase through metaphase and then transferring to the spindle midzone and midbody from anaphase through cytokinesis. Colocalized with gamma tubulin in the mid-body.

画像



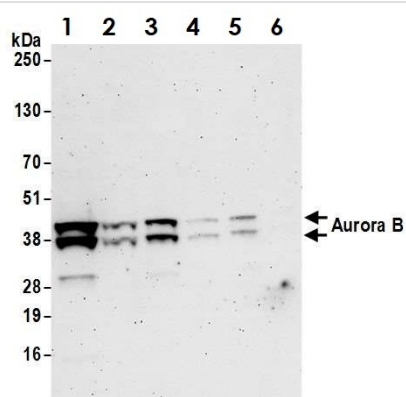
Immunoprecipitation - Anti-Aurora B antibody
(ab70238)

Immunoprecipitation of nocodazole-treated HeLa whole cell lysate

Lane 1: ab70238 current lot

Lane 2: ab70238 previous lot

Lane 3: Control IgG



Western blot - Anti-Aurora B antibody (ab70238)

All lanes : Anti-Aurora B antibody (ab70238) at 0.1 µg/ml

Lane 1 : HeLa cells treated with Nocodazole at 50 µg

Lane 2 : HeLa cells mock treated at 50 µg

Lane 3 : HeLa cells treated with Nocodazole at 15 µg

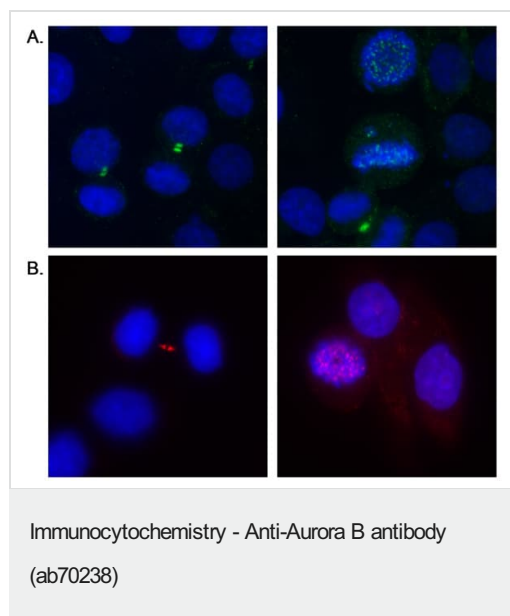
Lane 4 : HeLa cells mock treated at 15 µg

Lane 5 : HeLa cells treated with Nocodazole at 5 µg

Lane 6 : HeLa cells mock treated at 5 µg

Predicted band size: 39 kDa

Exposure time: 3 minutes



Immunocytochemistry/Immunofluorescence analysis of asynchronous HeLa cells labelling Aurora B with ab70238 at 0.5µg/ml in A and at 2µg/ml in B. A FITC-conjugated anti-rabbit IgG was used as the secondary antibody in A. A Texas Red-conjugated anti-rabbit IgG was used as the secondary antibody in B.

Please note: All products are "FOR RESEARCH USE ONLY. NOT FOR USE IN DIAGNOSTIC PROCEDURES"

Our Abpromise to you: Quality guaranteed and expert technical support

- Replacement or refund for products not performing as stated on the datasheet
- Valid for 12 months from date of delivery
- Response to your inquiry within 24 hours
- We provide support in Chinese, English, French, German, Japanese and Spanish
- Extensive multi-media technical resources to help you
- We investigate all quality concerns to ensure our products perform to the highest standards

If the product does not perform as described on this datasheet, we will offer a refund or replacement. For full details of the Abpromise, please visit <https://www.abcam.co.jp/abpromise> or contact our technical team.

Terms and conditions

- Guarantee only valid for products bought direct from Abcam or one of our authorized distributors