

Anti-Aurora A (phospho T288) antibody ab83968

★★★★☆ [2 Abreviews](#) [5 References](#) [画像数 2](#)

製品の概要

製品名	Anti-Aurora A (phospho T288) antibody
製品の詳細	Rabbit polyclonal to Aurora A (phospho T288)
由来種	Rabbit
アプリケーション	適用あり: ICC/IF
種交差性	交差種: Human
免疫原	Synthetic peptide corresponding to Human Aurora A (phospho T288). Database link: NP_003591.2
ポジティブ・コントロール	NBF fixed asynchronous HeLa cells.
特記事項	<p>The Life Science industry has been in the grips of a reproducibility crisis for a number of years. Abcam is leading the way in addressing this with our range of recombinant monoclonal antibodies and knockout edited cell lines for gold-standard validation. Please check that this product meets your needs before purchasing.</p> <p>If you have any questions, special requirements or concerns, please send us an inquiry and/or contact our Support team ahead of purchase. Recommended alternatives for this product can be found below, along with publications, customer reviews and Q&As</p>

製品の特性

製品の状態	Liquid
保存方法	Shipped at 4°C. Upon delivery aliquot and store at -20°C. Avoid freeze / thaw cycles.
バッファー	pH: 6.8 Preservative: 0.09% Sodium azide Constituents: 0.1% BSA, Tris buffered saline
精製度	Immunogen affinity purified
特記事項(精製)	Antibody was affinity purified using an epitope specific to Phospho Aurora A immobilized on a solid support.
ポリ/モノ	ポリクローナル
アイソタイプ	IgG

アプリケーション

The Abpromise guarantee **Abpromise保証は、次のテスト済みアプリケーションにおけるab83968の使用に適用されます**

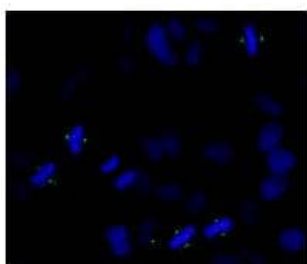
アプリケーションノートには、推奨の開始希釈率がありますが、適切な希釈率につきましてはご検討ください。

アプリケーション	Abreviews	特記事項
ICC/IF	★★★★★ (1)	1/100 - 1/500. Formaldehyde fixed cells. Permeabilisation with Triton-X100 is recommended.

ターゲット情報

機能	Contributes to the regulation of cell cycle progression. Required for normal mitosis. Associates with the centrosome and the spindle microtubules during mitosis and functions in centrosome maturation, spindle assembly, maintenance of spindle bipolarity, centrosome separation and mitotic checkpoint control. Phosphorylates numerous target proteins, including ARHGEF2, BRCA1, KIF2A, NDEL1, PARD3, PLK1 and BORA. Regulates KIF2A tubulin depolymerase activity (By similarity). Required for normal axon formation. Plays a role in microtubule remodeling during neurite extension. Important for microtubule formation and/or stabilization.
組織特異性	Highly expressed in testis and weakly in skeletal muscle, thymus and spleen. Also highly expressed in colon, ovarian, prostate, neuroblastoma, breast and cervical cancer cell lines.
配列類似性	Belongs to the protein kinase superfamily. Ser/Thr protein kinase family. Aurora subfamily. Contains 1 protein kinase domain.
翻訳後修飾	Activated by phosphorylation at Thr-288; this brings about a change in the conformation of the activation segment. Phosphorylation at Thr-288 varies during the cell cycle and is highest during M phase. Autophosphorylated at Thr-288 upon TPX2 binding. Phosphorylated upon DNA damage, probably by ATM or ATR. Ubiquitinated by CHFR, leading to its degradation by the proteasome (By similarity). Ubiquitinated by the anaphase-promoting complex (APC), leading to its degradation by the proteasome.
細胞内局在	Cytoplasm > cytoskeleton > centrosome. Cytoplasm > cytoskeleton > spindle pole. Detected at the neurite hillock in developing neurons (By similarity). Localizes on centrosomes in interphase cells and at each spindle pole in mitosis.

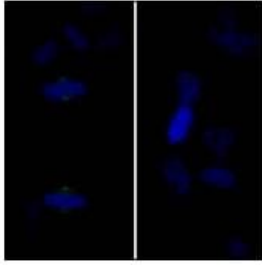
画像



ab83968, at a dilution of 1/250, staining Aurora A in NBF fixed asynchronous HeLa cells by Immunocytochemistry/Immunofluorescence.

Detection: Anti-rabbit IgG-FITC conjugated antibody used at a dilution of 1/100.

Immunocytochemistry/ Immunofluorescence - Anti-Aurora A (phospho T288) antibody (ab83968)



Immunocytochemistry/ Immunofluorescence - Anti-Aurora A (phospho T288) antibody (ab83968)

ab83968, at a dilution of 1/250, staining Aurora A in NBF fixed asynchronous HeLa cells by

Immunocytochemistry/Immunofluorescence.

Mock phosphatase treated section (left), or calf intestinal phosphatase treated section (right).

Detection: Anti-rabbit IgG-FITC conjugated antibody used at a dilution of 1/100.

Please note: All products are "FOR RESEARCH USE ONLY. NOT FOR USE IN DIAGNOSTIC PROCEDURES"

Our Abpromise to you: Quality guaranteed and expert technical support

- Replacement or refund for products not performing as stated on the datasheet
- Valid for 12 months from date of delivery
- Response to your inquiry within 24 hours

- We provide support in Chinese, English, French, German, Japanese and Spanish
- Extensive multi-media technical resources to help you
- We investigate all quality concerns to ensure our products perform to the highest standards

If the product does not perform as described on this datasheet, we will offer a refund or replacement. For full details of the Abpromise, please visit <https://www.abcam.co.jp/abpromise> or contact our technical team.

Terms and conditions

- Guarantee only valid for products bought direct from Abcam or one of our authorized distributors