

Anti-Aurora A antibody [EP1008Y] ab52973

リコンビナント RabMAb

★★★★☆ **2 Abreviews** **12 References** **画像数 4**

製品の概要

製品名	Anti-Aurora A antibody [EP1008Y]
製品の詳細	Rabbit monoclonal [EP1008Y] to Aurora A
由来種	Rabbit
アプリケーション	適用あり: WB, IP, IHC-P 適用なし: Flow Cyt or ICC/IF
種交差性	交差種: Human
免疫原	Synthetic peptide within Human Aurora A aa 350-450 (C terminal). The exact sequence is proprietary.
ポジティブ・コントロール	HepG2 nuclear cell lysate Human cervical carcinoma tissue IP: HepG2 whole cell lysate.
特記事項	<p>This product is a recombinant monoclonal antibody, which offers several advantages including:</p> <ul style="list-style-type: none">- High batch-to-batch consistency and reproducibility- Improved sensitivity and specificity- Long-term security of supply- Animal-free production <p>For more information see here.</p> <p>Our RabMAb[®] technology is a patented hybridoma-based technology for making rabbit monoclonal antibodies. For details on our patents, please refer to RabMAb[®] patents.</p> <p>Mouse, Rat: We have preliminary internal testing data to indicate this antibody may not react with these species. Please contact us for more information.</p>

製品の特性

製品の状態	Liquid
保存方法	Shipped at 4°C. Store at +4°C short term (1-2 weeks). Upon delivery aliquot. Store at -20°C. Avoid freeze / thaw cycle.
バッファー	pH: 7.20 Preservative: 0.05% Sodium azide Constituents: 0.1% BSA, 40% Glycerol (glycerin, glycerine), 9.85% Tris glycine, 50% Tissue culture supernatant
精製度	Protein A purified

ポリクローナル	モノクローナル
クローン名	EP1008Y
アイソタイプ	IgG

アプリケーション

The Abpromise guarantee **Abpromise保証は、次のテスト済みアプリケーションにおけるab52973の使用に適用されず**
アプリケーションノートには、推奨の開始希釈率がありますが、適切な希釈率につきましてはご検討ください。

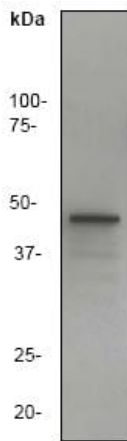
アプリケーション	Abreviews	特記事項
WB	★★★★★ (1)	1/50000. Detects a band of approximately 46 kDa (predicted molecular weight: 46 kDa).
IP		1/50.
IHC-P		1/100 - 1/250. Perform heat mediated antigen retrieval before commencing with IHC staining protocol.

追加情報 Is unsuitable for Flow Cyt or ICC/IF.

ターゲット情報

機能	Contributes to the regulation of cell cycle progression. Required for normal mitosis. Associates with the centrosome and the spindle microtubules during mitosis and functions in centrosome maturation, spindle assembly, maintenance of spindle bipolarity, centrosome separation and mitotic checkpoint control. Phosphorylates numerous target proteins, including ARHGEF2, BRCA1, KIF2A, NDEL1, PARD3, PLK1 and BORA. Regulates KIF2A tubulin depolymerase activity (By similarity). Required for normal axon formation. Plays a role in microtubule remodeling during neurite extension. Important for microtubule formation and/or stabilization.
組織特異性	Highly expressed in testis and weakly in skeletal muscle, thymus and spleen. Also highly expressed in colon, ovarian, prostate, neuroblastoma, breast and cervical cancer cell lines.
配列類似性	Belongs to the protein kinase superfamily. Ser/Thr protein kinase family. Aurora subfamily. Contains 1 protein kinase domain.
翻訳後修飾	Activated by phosphorylation at Thr-288; this brings about a change in the conformation of the activation segment. Phosphorylation at Thr-288 varies during the cell cycle and is highest during M phase. Autophosphorylated at Thr-288 upon TPX2 binding. Phosphorylated upon DNA damage, probably by ATM or ATR. Ubiquitinated by CHFR, leading to its degradation by the proteasome (By similarity). Ubiquitinated by the anaphase-promoting complex (APC), leading to its degradation by the proteasome.
細胞内局在	Cytoplasm > cytoskeleton > centrosome. Cytoplasm > cytoskeleton > spindle pole. Detected at the neurite hillock in developing neurons (By similarity). Localizes on centrosomes in interphase cells and at each spindle pole in mitosis.

画像



Western blot - Anti-Aurora A antibody [EP1008Y] (ab52973)

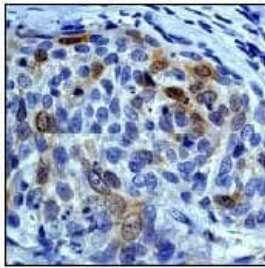
Anti-Aurora A antibody [EP1008Y] (ab52973) at 1/50000 dilution + HepG2 (Human liver hepatocellular carcinoma cell line) cell lysate at 10 µg

Secondary

Goat anti-rabbit HRP at 1/2000 dilution

Predicted band size: 46 kDa

Observed band size: 46 kDa

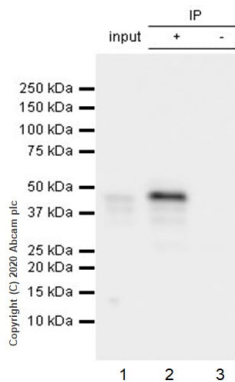


Immunohistochemistry (Formalin/PFA-fixed paraffin-embedded sections) - Anti-Aurora A antibody [EP1008Y] (ab52973)

Formalin-fixed, paraffin-embedded human cervical carcinoma tissue stained for Aurora A with ab52973 (1/100 dilution) in immunohistochemical analysis. Inset panel is a larger magnification of the image.

Inset panel is a larger magnification of the image.

Perform heat mediated antigen retrieval before commencing with IHC staining protocol.



Immunoprecipitation - Anti-Aurora A antibody [EP1008Y] (ab52973)

Purified ab52973 at 1/50 dilution (2µg) immunoprecipitating Aurora A in HepG2 whole cell lysate.

Lane 1 (input): HepG2 (Human hepatocellular carcinoma epithelial cell) whole cell lysate 10µg

Lane 2 (+): ab52973 + HepG2 whole cell lysate.

Lane 3 (-): Rabbit monoclonal IgG (**ab172730**) instead of ab52973 in HepG2 whole cell lysate.

VeriBlot for IP Detection Reagent (HRP) (**ab131366**) (1/1000 dilution) was used for Western blotting.

Blocking Buffer and concentration: 5% NFDm/TBST.

Diluting buffer and concentration: 5% NFDm/TBST.

Observed band size: 46 kDa

Why choose a recombinant antibody?

Research with confidence
Consistent and reproducible results

Long-term and scalable supply
Recombinant technology

Success from the first experiment
Confirmed specificity

Ethical standards compliant
Animal-free production

Anti-Aurora A antibody [EP1008Y] (ab52973)

Please note: All products are "FOR RESEARCH USE ONLY. NOT FOR USE IN DIAGNOSTIC PROCEDURES"

Our Abpromise to you: Quality guaranteed and expert technical support

- Replacement or refund for products not performing as stated on the datasheet
- Valid for 12 months from date of delivery
- Response to your inquiry within 24 hours
- We provide support in Chinese, English, French, German, Japanese and Spanish
- Extensive multi-media technical resources to help you
- We investigate all quality concerns to ensure our products perform to the highest standards

If the product does not perform as described on this datasheet, we will offer a refund or replacement. For full details of the Abpromise, please visit <https://www.abcam.co.jp/abpromise> or contact our technical team.

Terms and conditions

- Guarantee only valid for products bought direct from Abcam or one of our authorized distributors