


### Anti-ATPB antibody [EPR11991] ab170948

リコンビナント **RabMAb**

**1 Abreviews**    **画像数 4**

#### 製品の概要

製品名	Anti-ATPB antibody [EPR11991]
製品の詳細	Rabbit monoclonal [EPR11991] to ATPB
由来種	Rabbit
アプリケーション	<b>適用あり:</b> Flow Cyt (Intra), WB, IP <b>適用なし:</b> ICC/IF or IHC-P
種交差性	<b>交差種:</b> Human <b>交差が予測される動物種:</b> Mouse, Rat 
免疫原	Synthetic peptide. This information is proprietary to Abcam and/or its suppliers.
ポジティブ・コントロール	HepG2, 293T, HeLa and JAR cell lysates; 293 cell lysate; 293 cells
特記事項	This product is a recombinant monoclonal antibody, which offers several advantages including: <ul style="list-style-type: none"> <li>- High batch-to-batch consistency and reproducibility</li> <li>- Improved sensitivity and specificity</li> <li>- Long-term security of supply</li> <li>- Animal-free production</li> </ul> For more information <b><a href="#">see here</a></b> . Our RabMAb <sup>®</sup> technology is a patented hybridoma-based technology for making rabbit monoclonal antibodies. For details on our patents, please refer to <b><a href="#">RabMAb<sup>®</sup> patents</a></b> .

#### 製品の特性

製品の状態	Liquid
保存方法	Shipped at 4°C. Store at +4°C short term (1-2 weeks). Upon delivery aliquot. Store at -20°C long term. Avoid freeze / thaw cycle.
バッファー	pH: 7.20 Preservative: 0.01% Sodium azide Constituents: 9% PBS, 40% Glycerol (glycerin, glycerine), 0.05% BSA, 50% Tissue culture supernatant
精製度	Tissue culture supernatant
ポリ/モノ	モノクローナル

クローン名	EPR11991
アイソタイプ	IgG

#### アプリケーション

**The Abpromise guarantee**      **Abpromise保証は、** 次のテスト済みアプリケーションにおけるab170948の使用に適用されます  
アプリケーションノートには、推奨の開始希釈率がありますが、適切な希釈率につきましてはご検討ください。

アプリケーション	Abreviews	特記事項
Flow Cyt (Intra)		Use at an assay dependent concentration. <b>ab172730</b> - Rabbit monoclonal IgG, is suitable for use as an isotype control with this antibody.
WB		Use at an assay dependent concentration. Predicted molecular weight: 56 kDa.
IP		Use at an assay dependent concentration.

**追加情報**      Is unsuitable for ICC/IF or IHC-P.

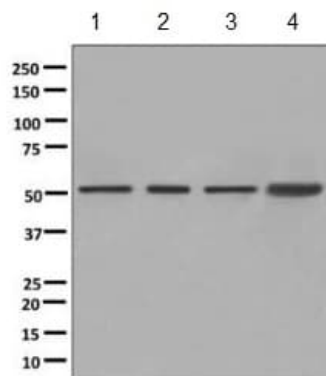
#### ターゲット情報

**機能**      Mitochondrial membrane ATP synthase (F(1)F(0) ATP synthase or Complex V) produces ATP from ADP in the presence of a proton gradient across the membrane which is generated by electron transport complexes of the respiratory chain. F-type ATPases consist of two structural domains, F(1) - containing the extramembraneous catalytic core, and F(0) - containing the membrane proton channel, linked together by a central stalk and a peripheral stalk. During catalysis, ATP synthesis in the catalytic domain of F(1) is coupled via a rotary mechanism of the central stalk subunits to proton translocation. Subunits alpha and beta form the catalytic core in F(1). Rotation of the central stalk against the surrounding alpha(3)beta(3) subunits leads to hydrolysis of ATP in three separate catalytic sites on the beta subunits.

**配列類似性**      Belongs to the ATPase alpha/beta chains family.

**細胞内局在**      Mitochondrion. Mitochondrion inner membrane. Peripheral membrane protein.

#### 画像



Western blot - Anti-ATPB antibody [EPR11991]  
(ab170948)

**All lanes :** Anti-ATPB antibody [EPR11991] (ab170948) at  
1/10000 dilution

**Lane 1 :** HepG2 cell lysate

**Lane 2 :** 293T (Human embryonic kidney epithelial cell) cell lysate

**Lane 3 :** HeLa cell lysate

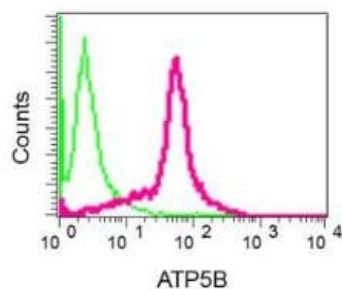
**Lane 4 :** JAR cell lysate

Lysates/proteins at 10 µg per lane.

### Secondary

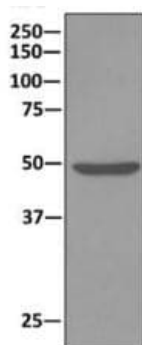
**All lanes :** Goat anti-rabbit HRP at 1/2000 dilution

**Predicted band size:** 56 kDa



Flow Cytometry (Intracellular) - Anti-ATPB antibody  
[EPR11991] (ab170948)

Intracellular flow cytometric analysis of permeabilized 293 cells  
labeling ATP5B using ab170948 at 1/10 dilution (red) or a rabbit  
IgG negative (green).



Immunoprecipitation - Anti-ATPB antibody  
[EPR11991] (ab170948)

Anti-ATPB antibody [EPR11991] (ab170948) at 1/10 dilution + 293  
cell lysate at 10 µg

### Secondary

HRP-conjugated anti-rabbit IgG preferentially detecting the non-  
reduced form of rabbit IgG.

### Why choose a recombinant antibody?



**Research with confidence**  
Consistent and reproducible results



**Long-term and scalable supply**  
Recombinant technology



**Success from the first experiment**  
Confirmed specificity



**Ethical standards compliant**  
Animal-free production

Anti-ATPB antibody [EPR11991] (ab170948)

**Please note:** All products are "FOR RESEARCH USE ONLY. NOT FOR USE IN DIAGNOSTIC PROCEDURES"

### Our Abpromise to you: Quality guaranteed and expert technical support

---

- Replacement or refund for products not performing as stated on the datasheet
- Valid for 12 months from date of delivery
- Response to your inquiry within 24 hours
- We provide support in Chinese, English, French, German, Japanese and Spanish
- Extensive multi-media technical resources to help you
- We investigate all quality concerns to ensure our products perform to the highest standards

If the product does not perform as described on this datasheet, we will offer a refund or replacement. For full details of the Abpromise, please visit <https://www.abcam.co.jp/abpromise> or contact our technical team.

### Terms and conditions

---

- Guarantee only valid for products bought direct from Abcam or one of our authorized distributors