


Anti-ATPAF2 antibody ab74235

画像数 1

製品の概要

製品名	Anti-ATPAF2 antibody
製品の詳細	Rabbit polyclonal to ATPAF2
由来種	Rabbit
アプリケーション	適用あり: WB
種交差性	交差種: Human 交差が予測される動物種: Mouse 
免疫原	A synthesized peptide derived from the internal region of human ATPAF2.
ポジティブ・コントロール	Extracts from Jurkat cells.
特記事項	<p>The Life Science industry has been in the grips of a reproducibility crisis for a number of years. Abcam is leading the way in addressing this with our range of recombinant monoclonal antibodies and knockout edited cell lines for gold-standard validation. Please check that this product meets your needs before purchasing.</p> <p>If you have any questions, special requirements or concerns, please send us an inquiry and/or contact our Support team ahead of purchase. Recommended alternatives for this product can be found below, along with publications, customer reviews and Q&As</p>

製品の特性

製品の状態	Liquid
保存方法	Shipped at 4°C. Upon delivery aliquot and store at -20°C. Avoid freeze / thaw cycles.
バッファー	pH: 7.40 Preservative: 0.02% Sodium azide Constituents: 50% Glycerol (glycerin, glycerine), 0.87% Sodium chloride, PBS
精製度	Immunogen affinity purified
ポリ/モノ	ポリクローナル
アイソタイプ	IgG

アプリケーション

The Abpromise guarantee

Abpromise保証は、次のテスト済みアプリケーションにおけるab74235の使用に適用されます

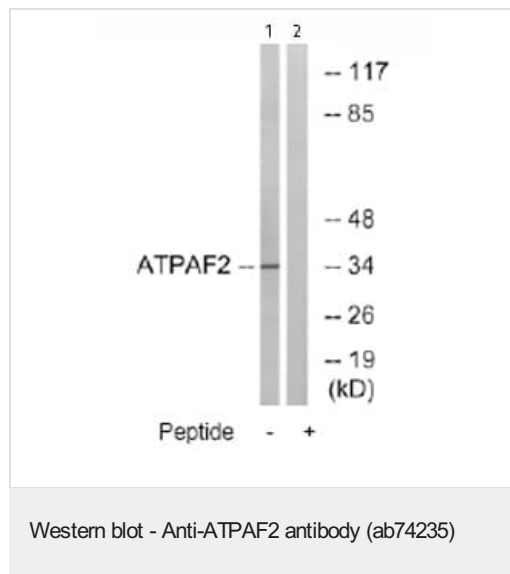
アプリケーションノートには、推奨の開始希釈率がありますが、適切な希釈率につきましてはご確認ください。

アプリケーション	Abreviews	特記事項
WB		1/500 - 1/1000. Detects a band of approximately 33 kDa (predicted molecular weight: 33 kDa).

ターゲット情報

関連性	ATPAF2 belongs to the ATP12 family. It may play a role in the assembly of the F1 component of the mitochondrial ATP synthase (ATPase). Defects in ATPAF2 are the cause of complex V mitochondrial respiratory chain ATPAF2 subunit deficiency (ATPAF2 deficiency) [MIM:604273]; also called ATP synthase deficiency or ATPase deficiency. ATPAF2 deficiency seems to be an early presenting disease in which lactic acidosis, dysmorphic features, and methyl glutaconic aciduria can be major clues in the diagnosis. Dysmorphic features include a large mouth, prominent nasal bridge, micrognathia, rocker-bottom feet and flexion contractures of the limbs associated with camptodactyly. Patients are hypertonic and have an enlarged liver, hypoplastic kidneys and elevated lactate levels in urine, plasma and cerebro spinal fluid (CSF).
細胞内局在	Mitochondrion

画像



All lanes : Anti-ATPAF2 antibody (ab74235) at 1/500 dilution

Lane 1 : Extracts from Jurkat cells

Lane 2 : Extracts from Jurkat cells plus 5µg immunizing peptide

Lysates/proteins at 5 µg per lane.

Predicted band size: 33 kDa

Observed band size: 33 kDa

Please note: All products are "FOR RESEARCH USE ONLY. NOT FOR USE IN DIAGNOSTIC PROCEDURES"

Our Abpromise to you: Quality guaranteed and expert technical support

- Replacement or refund for products not performing as stated on the datasheet
- Valid for 12 months from date of delivery
- Response to your inquiry within 24 hours
- We provide support in Chinese, English, French, German, Japanese and Spanish

- Extensive multi-media technical resources to help you
- We investigate all quality concerns to ensure our products perform to the highest standards

If the product does not perform as described on this datasheet, we will offer a refund or replacement. For full details of the Abpromise, please visit <https://www.abcam.co.jp/abpromise> or contact our technical team.

Terms and conditions

- Guarantee only valid for products bought direct from Abcam or one of our authorized distributors