

Anti-ATP8B1 antibody ab121576

画像数 4

製品の概要

製品名	Anti-ATP8B1 antibody
製品の詳細	Rabbit polyclonal to ATP8B1
由来種	Rabbit
アプリケーション	適用あり: IHC-P
種交差性	交差種: Human
免疫原	KMWLTGDKK ETAENIGFAC ELLTEDTTIC YGEDINSLH ARMENQRNRG GVIYAKFAPPV QESFFPPGGN RALII internal sequence amino acids 727-801 of Human ATP8B1.  Run BLAST with   Run BLAST with 
ポジティブ・コントロール	IHC-P: Human lymph node, liver, kidney and cerebral cortex tissue.
特記事項	<p>The Life Science industry has been in the grips of a reproducibility crisis for a number of years. Abcam is leading the way in addressing this with our range of recombinant monoclonal antibodies and knockout edited cell lines for gold-standard validation. Please check that this product meets your needs before purchasing.</p> <p>If you have any questions, special requirements or concerns, please send us an inquiry and/or contact our Support team ahead of purchase. Recommended alternatives for this product can be found below, along with publications, customer reviews and Q&As</p>

製品の特性

製品の状態	Liquid
保存方法	Shipped at 4°C. Upon delivery aliquot and store at -20°C. Avoid repeated freeze / thaw cycles.
バッファー	pH: 7.20 Preservative: 0.02% Sodium azide Constituents: 59% PBS, 40% Glycerol (glycerin, glycerine)
精製度	Immunogen affinity purified
ポリ/モノ	ポリクローナル
アイソタイプ	IgG

アプリケーション

The Abpromise guarantee

Abpromise保証は、次のテスト済みアプリケーションにおけるab121576の使用に適用されます

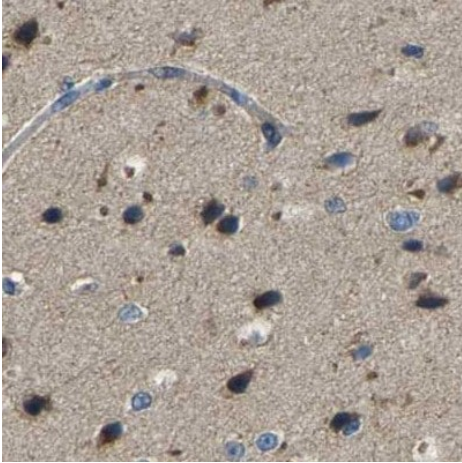
アプリケーションノートには、推奨の開始希釈率がありますが、適切な希釈率につきましてはご検討ください。

アプリケーション	Abreviews	特記事項
IHC-P		1/20 - 1/50. Perform heat mediated antigen retrieval with citrate buffer pH 6 before commencing with IHC staining protocol. Use buffer at pH 6 for antigen retrieval.

ターゲット情報

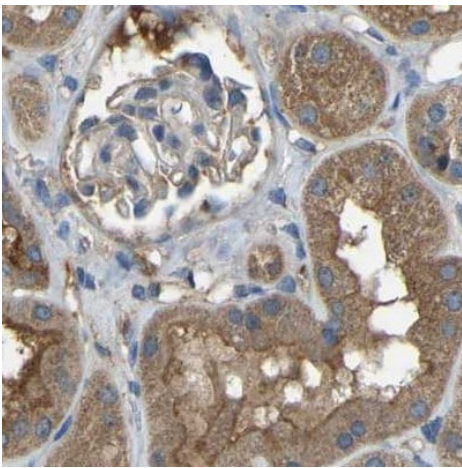
機能	May play a role in the transport of aminophospholipids from the outer to the inner leaflet of various membranes and the maintenance of asymmetric distribution of phospholipids in the canicular membrane. May have a role in transport of bile acids into the canaliculus, uptake of bile acids from intestinal contents into intestinal mucosa or both.
組織特異性	Found in most tissues except brain and skeletal muscle. Most abundant in pancreas and small intestine.
関連疾患	<p>Defects in ATP8B1 are the cause of progressive familial intrahepatic cholestasis type 1 (PFIC1) [MIM:211600]; also known as Byler disease. PFIC1 is an autosomal recessive disorder, characterized by early infancy cholestasis, that may be initially episodic but progresses to malnutrition, growth retardation and end-stage liver disease before adulthood.</p> <p>Defects in ATP8B1 are the cause of benign recurrent intrahepatic cholestasis type 1 (BRIC1) [MIM:243300]; also known as Summerskill syndrome. BRIC is characterized by intermittent episodes of cholestasis without progression to liver failure. There is initial elevation of serum bile acids, followed by cholestatic jaundice which generally spontaneously resolves after periods of weeks to months. The cholestatic attacks vary in severity and duration. Patients are asymptomatic between episodes, both clinically and biochemically.</p> <p>Defects in ATP8B1 can be associated with intrahepatic cholestasis of pregnancy (ICP) [MIM:147480]; also known as pregnancy-related cholestasis. ICP is a multifactorial liver disorder of pregnancy. It presents during the second or, more commonly, the third trimester of pregnancy with intense pruritus which becomes more severe with advancing gestation and cholestasis. Cholestasis results from abnormal biliary transport from the liver into the small intestine. ICP causes fetal distress, spontaneous premature delivery and intrauterine death. ICP patients have spontaneous and progressive disappearance of cholestasis after delivery.</p>
配列類似性	Belongs to the cation transport ATPase (P-type) (TC 3.A.3) family. Type IV subfamily.
細胞内局在	Membrane.

画像



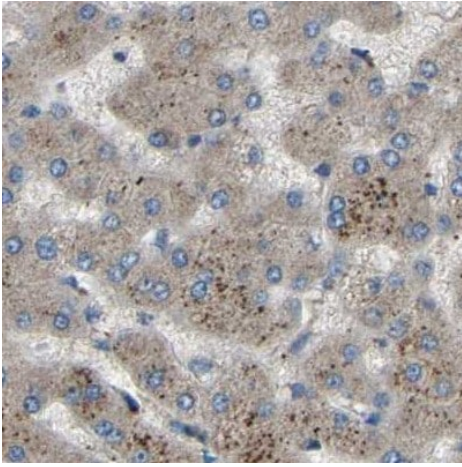
Immunohistochemical analysis of human cerebral cortex tissue labeling ATP8B1 with ab121576 at 1/20 dilution.

Immunohistochemistry (Formalin/PFA-fixed paraffin-embedded sections) - Anti-ATP8B1 antibody (ab121576)



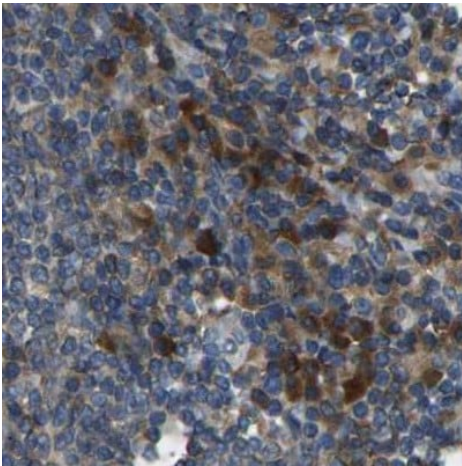
Immunohistochemical analysis of human kidney tissue labeling ATP8B1 with ab121576 at 1/20 dilution.

Immunohistochemistry (Formalin/PFA-fixed paraffin-embedded sections) - Anti-ATP8B1 antibody (ab121576)



Immunohistochemical analysis of human liver tissue labeling ATP8B1 with ab121576 at 1/20 dilution.

Immunohistochemistry (Formalin/PFA-fixed paraffin-embedded sections) - Anti-ATP8B1 antibody (ab121576)



Immunohistochemical analysis of human lymph node tissue labeling ATP8B1 with ab121576 at 1/20 dilution.

Immunohistochemistry (Formalin/PFA-fixed paraffin-embedded sections) - Anti-ATP8B1 antibody (ab121576)

Please note: All products are "FOR RESEARCH USE ONLY. NOT FOR USE IN DIAGNOSTIC PROCEDURES"

Our Abpromise to you: Quality guaranteed and expert technical support

- Replacement or refund for products not performing as stated on the datasheet
- Valid for 12 months from date of delivery

- Response to your inquiry within 24 hours
- We provide support in Chinese, English, French, German, Japanese and Spanish
- Extensive multi-media technical resources to help you
- We investigate all quality concerns to ensure our products perform to the highest standards

If the product does not perform as described on this datasheet, we will offer a refund or replacement. For full details of the Abpromise, please visit <https://www.abcam.co.jp/abpromise> or contact our technical team.

Terms and conditions

- Guarantee only valid for products bought direct from Abcam or one of our authorized distributors