

Anti-ATP6V1A antibody [8B1F3] ab113745

2 References [画像数 1](#)

製品の概要

製品名	Anti-ATP6V1A antibody [8B1F3]
製品の詳細	Mouse monoclonal [8B1F3] to ATP6V1A
由来種	Mouse
アプリケーション	適用あり: WB
種交差性	交差種: <i>Saccharomyces cerevisiae</i>
免疫原	Full length native protein (purified). This information is considered to be commercially sensitive.
特記事項	<p>This antibody clone is manufactured by Abcam. If you require a custom buffer formulation or conjugation for your experiments, please contact orders@abcam.com.</p> <p>The Life Science industry has been in the grips of a reproducibility crisis for a number of years. Abcam is leading the way in addressing this with our range of recombinant monoclonal antibodies and knockout edited cell lines for gold-standard validation. Please check that this product meets your needs before purchasing.</p> <p>If you have any questions, special requirements or concerns, please send us an inquiry and/or contact our Support team ahead of purchase. Recommended alternatives for this product can be found below, along with publications, customer reviews and Q&As</p> <p>Product was previously marketed under the MitoSciences sub-brand.</p>

製品の特性

製品の状態	Liquid
保存方法	Shipped at 4°C. Store at +4°C.
バッファー	<p>pH: 7.5</p> <p>Preservative: 0.02% Sodium azide</p> <p>Constituent: HEPES buffered saline</p>
精製度	Immunogen affinity purified
特記事項 (精製)	Near homogeneity. The antibody was produced in vitro using hybridomas grown in serum-free medium, and then purified by chemical fractionation.
ポリ/モノ	モノクローナル
クローン名	8B1F3

アイソタイプ IgG2a
軽鎖の種類 kappa

アプリケーション

The Abpromise guarantee **Abpromise保証は、** 次のテスト済みアプリケーションにおけるab113745の使用に適用されます
アプリケーションノートには、推奨の開始希釈率がありますが、適切な希釈率につきましてはご検討ください。

アプリケーション	Abreviews	特記事項
WB		Use a concentration of 0.1 - 1 µg/ml. Detects a band of approximately 69 kDa (predicted molecular weight: 69 kDa).

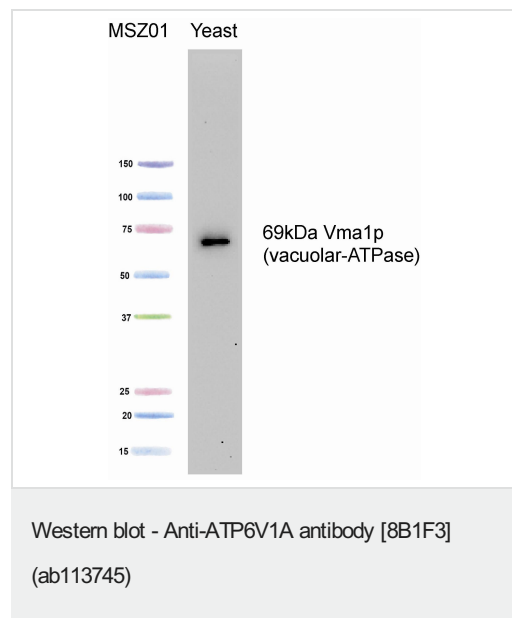
ターゲット情報

機能 Catalytic subunit of the peripheral V1 complex of vacuolar ATPase. V-ATPase vacuolar ATPase is responsible for acidifying a variety of intracellular compartments in eukaryotic cells.

組織特異性 Present in all tissues analyzed.

配列類似性 Belongs to the ATPase alpha/beta chains family.

画像



Anti-ATP6V1A antibody [8B1F3] (ab113745) at 1 µg/ml + Yeast
Whole Cell at 15 µg

Predicted band size: 69 kDa

Please note: All products are "FOR RESEARCH USE ONLY. NOT FOR USE IN DIAGNOSTIC PROCEDURES"

Our Abpromise to you: Quality guaranteed and expert technical support

- Replacement or refund for products not performing as stated on the datasheet
- Valid for 12 months from date of delivery

- Response to your inquiry within 24 hours
- We provide support in Chinese, English, French, German, Japanese and Spanish
- Extensive multi-media technical resources to help you
- We investigate all quality concerns to ensure our products perform to the highest standards

If the product does not perform as described on this datasheet, we will offer a refund or replacement. For full details of the Abpromise, please visit <https://www.abcam.co.jp/abpromise> or contact our technical team.

Terms and conditions

- Guarantee only valid for products bought direct from Abcam or one of our authorized distributors