


Anti-ATP6V0A2 antibody ab96803

5 References [画像数 2](#)

医薬用外劇物

製品の概要

| | |
|--------------|---|
| 製品名 | Anti-ATP6V0A2 antibody |
| 製品の詳細 | Rabbit polyclonal to ATP6V0A2 |
| 由来種 | Rabbit |
| アプリケーション | 適用あり: WB, IHC-P |
| 種交差性 | 交差種: Human 交差が予測される動物種: Mouse, Rat, Cow  |
| 免疫原 | Recombinant fragment corresponding to a region within amino acids 156-404 of Human ATP6V0A2 (NP_036595). |
| ポジティブ・コントロール | 293T, A431 and H1299 whole cell lysates; DLD1 xenograft; HeLa, HepG2, MOLT4 and Raji cell lysates |
| 特記事項 | <p>The Life Science industry has been in the grips of a reproducibility crisis for a number of years. Abcam is leading the way in addressing this with our range of recombinant monoclonal antibodies and knockout edited cell lines for gold-standard validation. Please check that this product meets your needs before purchasing.</p> <p>If you have any questions, special requirements or concerns, please send us an inquiry and/or contact our Support team ahead of purchase. Recommended alternatives for this product can be found below, along with publications, customer reviews and Q&As</p> |

製品の特性

| | |
|--------|--|
| 製品の状態 | Liquid |
| 保存方法 | Shipped at 4°C. Upon delivery aliquot. Store at -20°C or -80°C. Avoid freeze / thaw cycle. |
| バッファー | pH: 7.00 Preservative: 0.01% Thimerosal (merthiolate) Constituents: 79.99% PBS, 20% Glycerol (glycerin, glycerine) |
| 精製度 | Immunogen affinity purified |
| ポリ/モノ | ポリクローナル |
| アイソタイプ | IgG |

アプリケーション

The Abpromise guarantee

Abpromise保証は、次のテスト済みアプリケーションにおけるab96803の使用に適用されます

アプリケーションノートには、推奨の開始希釈率がありますが、適切な希釈率につきましてはご確認ください。

| アプリケーション | Abreviews | 特記事項 |
|----------|-----------|---|
| WB | | 1/500 - 1/3000. Predicted molecular weight: 98 kDa. |
| IHC-P | | 1/100 - 1/500. |

ターゲット情報

機能

Part of the proton channel of V-ATPases. Essential component of the endosomal pH-sensing machinery. May play a role in maintaining the Golgi functions, such as glycosylation maturation, by controlling the Golgi pH.

関連疾患

Defects in ATP6V0A2 are the cause of cutis laxa autosomal recessive type 2A (ARCL2A) [MIM:219200]. An autosomal recessive disorder characterized by an excessive congenital skin wrinkling, a large fontanelle with delayed closure, a typical facial appearance with downslanting palpebral fissures, a general connective tissue weakness, and varying degrees of growth and developmental delay and neurological abnormalities. Some affected individuals develop seizures and mental deterioration later in life, whereas the skin phenotype tends to become milder with age. At the molecular level, an abnormal glycosylation of serum proteins is observed in many cases.

Defects in ATP6V0A2 are a cause of wrinkly skin syndrome (WSS) [MIM:278250]. WSS is rare autosomal recessive disorder characterized by wrinkling of the skin of the dorsum of the hands and feet, an increased number of palmar and plantar creases, wrinkled abdominal skin, multiple musculoskeletal abnormalities, microcephaly, growth failure and developmental delay.

配列類似性

Belongs to the V-ATPase 116 kDa subunit family.

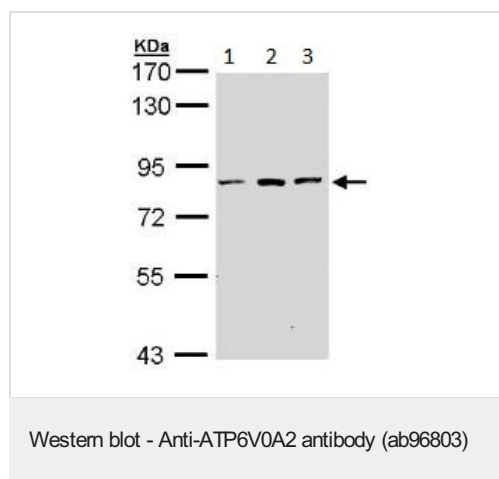
翻訳後修飾

Phosphorylated upon DNA damage, probably by ATM or ATR.

細胞内局在

Cell membrane. Endosome membrane. In kidney proximal tubules, also detected in subapical vesicles.

画像



All lanes : Anti-ATP6V0A2 antibody (ab96803) at 1/10000 dilution

Lane 1 : 293T whole cell lysate

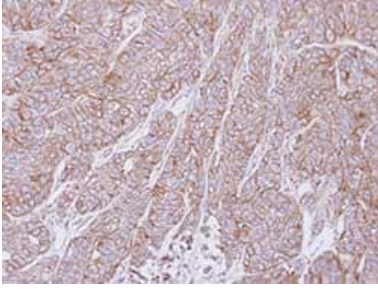
Lane 2 : A431 whole cell lysate

Lane 3 : H1299 whole cell lysate

Lysates/proteins at 30 µg per lane.

Predicted band size: 98 kDa

7.5% SDS PAGE



ab96803, at 1/500 dilution, staining ATP6V0A2 in paraffin-embedded DLD1 xenograft by Immunohistochemistry.

Immunohistochemistry (Formalin/PFA-fixed paraffin-embedded sections) - Anti-ATP6V0A2 antibody (ab96803)

Please note: All products are "FOR RESEARCH USE ONLY. NOT FOR USE IN DIAGNOSTIC PROCEDURES"

Our Abpromise to you: Quality guaranteed and expert technical support

- Replacement or refund for products not performing as stated on the datasheet
- Valid for 12 months from date of delivery
- Response to your inquiry within 24 hours
- We provide support in Chinese, English, French, German, Japanese and Spanish
- Extensive multi-media technical resources to help you
- We investigate all quality concerns to ensure our products perform to the highest standards

If the product does not perform as described on this datasheet, we will offer a refund or replacement. For full details of the Abpromise, please visit <https://www.abcam.co.jp/abpromise> or contact our technical team.

Terms and conditions

- Guarantee only valid for products bought direct from Abcam or one of our authorized distributors