



Anti-ATP5O antibody ab230325

画像数 5

製品の概要

製品名	Anti-ATP5O antibody
製品の詳細	Rabbit polyclonal to ATP5O
由来種	Rabbit
アプリケーション	適用あり: Flow Cyt (Intra), WB, IHC-P
種交差性	交差種: Human 交差が予測される動物種: Cow, Pig, Orangutan 
免疫原	Synthetic peptide corresponding to Human ATP5O aa 1-100. Database link: P48047  Run BLAST with  Run BLAST with
ポジティブ・コントロール	IHC-P: Human skeletal muscle tissue. WB: HEK-293 cell lysate. Flow: HEK-293 cells.
特記事項	<p>The Life Science industry has been in the grips of a reproducibility crisis for a number of years. Abcam is leading the way in addressing this with our range of recombinant monoclonal antibodies and knockout edited cell lines for gold-standard validation. Please check that this product meets your needs before purchasing.</p> <p>If you have any questions, special requirements or concerns, please send us an inquiry and/or contact our Support team ahead of purchase. Recommended alternatives for this product can be found below, along with publications, customer reviews and Q&As</p>

製品の特性

製品の状態	Liquid
保存方法	Shipped at 4°C. Store at +4°C short term (1-2 weeks). Upon delivery aliquot. Store at -20°C long term. Avoid freeze / thaw cycle.
バッファー	pH: 7.4 Preservative: 0.09% Sodium azide Constituent: PBS
精製度	Protein A purified
ポリ/モノ	ポリクローナル
アイソタイプ	IgG

アプリケーション

The Abpromise guarantee **Abpromise保証は、次のテスト済みアプリケーションにおけるab230325の使用に適用されます**
アプリケーションノートには、推奨の開始希釈率がありますが、適切な希釈率につきましてはご検討ください。

アプリケーション	Abreviews	特記事項
Flow Cyt (Intra)		1/10 - 1/50.
WB		1/1000. Predicted molecular weight: 23 kDa.
IHC-P		Use a concentration of 5 µg/ml. Perform heat mediated antigen retrieval before commencing with IHC staining protocol.

ターゲット情報

機能

Mitochondrial membrane ATP synthase (F(1)F(0) ATP synthase or Complex V) produces ATP from ADP in the presence of a proton gradient across the membrane which is generated by electron transport complexes of the respiratory chain. F-type ATPases consist of two structural domains, F(1) - containing the extramembraneous catalytic core and F(0) - containing the membrane proton channel, linked together by a central stalk and a peripheral stalk. During catalysis, ATP synthesis in the catalytic domain of F(1) is coupled via a rotary mechanism of the central stalk subunits to proton translocation. Part of the complex F(0) domain and the peripheric stalk, which acts as a stator to hold the catalytic alpha(3)beta(3) subcomplex and subunit a/ATP6 static relative to the rotary elements.

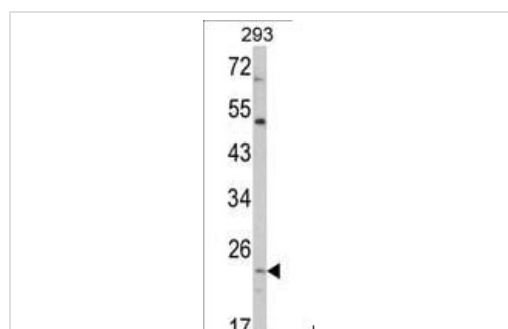
配列類似性

Belongs to the ATPase delta chain family.

細胞内局在

Mitochondrion. Mitochondrion inner membrane.

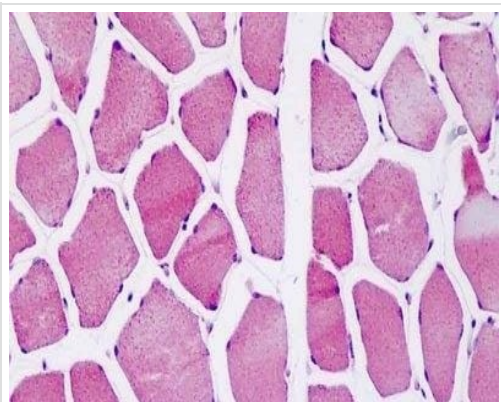
画像



Anti-ATP5O antibody (ab230325) at 1/1000 dilution + HEK-293 (human epithelial cell line from embryonic kidney) whole cell lysate at 35 µg

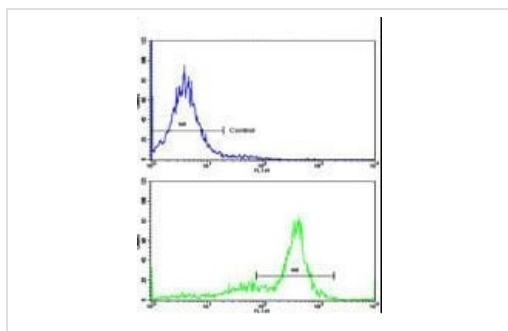
Predicted band size: 23 kDa

Western blot - Anti-ATP5O antibody (ab230325)



Immunohistochemistry (Formalin/PFA-fixed paraffin-embedded sections) - Anti-ATP5O antibody (ab230325)

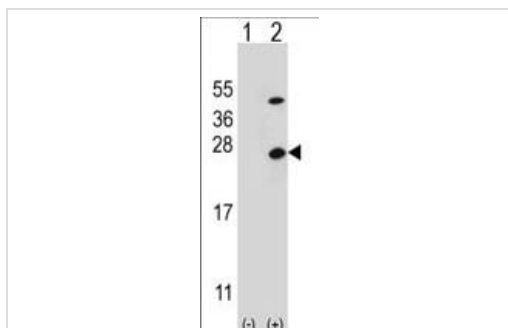
Formalin-fixed, paraffin-embedded human skeletal muscle tissue stained for ATP50 using ab230325 (5 µg/ml) in immunohistochemical analysis.



Flow Cytometry (Intracellular) - Anti-ATP5O antibody (ab230325)

Intracellular flow cytometric analysis of HEK-293 (human epithelial cell line from embryonic kidney) cells labeling ATP50 with ab230325 at 1/10 dilution (green) compared with a negative control (blue).

FITC-conjugated goat-anti-rabbit secondary antibodies were used for the analysis.



Western blot - Anti-ATP5O antibody (ab230325)

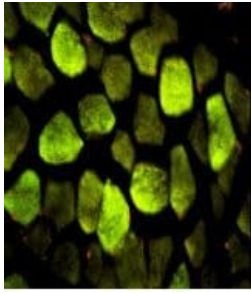
All lanes : Anti-ATP5O antibody (ab230325) at 1/1000 dilution

Lane 1 : Non-transfected HEK-293 (human epithelial cell line from embryonic kidney) whole cell lysate

Lane 2 : ATP50-transfected HEK-293 (human epithelial cell line from embryonic kidney) whole cell lysate

Lysates/proteins at 2 µg per lane.

Predicted band size: 23 kDa



Immunohistochemistry (Formalin/PFA-fixed paraffin-embedded sections) - Anti-ATP5O antibody (ab230325)

Paraffin-embedded human skeletal muscle stained for ATP5O (green) using ab230325 (0.05 mg/ml) in immunohistochemical analysis.

FITC-conjugated goat anti-rabbit IgG was used as the secondary antibody. Counterstained with Propidium Iodide (red).

Please note: All products are "FOR RESEARCH USE ONLY. NOT FOR USE IN DIAGNOSTIC PROCEDURES"

Our Abpromise to you: Quality guaranteed and expert technical support

- Replacement or refund for products not performing as stated on the datasheet
- Valid for 12 months from date of delivery
- Response to your inquiry within 24 hours
- We provide support in Chinese, English, French, German, Japanese and Spanish
- Extensive multi-media technical resources to help you
- We investigate all quality concerns to ensure our products perform to the highest standards

If the product does not perform as described on this datasheet, we will offer a refund or replacement. For full details of the Abpromise, please visit <https://www.abcam.co.jp/abpromise> or contact our technical team.

Terms and conditions

- Guarantee only valid for products bought direct from Abcam or one of our authorized distributors