

Anti-ATP5O antibody [4C11C10D12] ab110276

★★★★★ [1 Abreviews](#) [23 References](#) [画像数 6](#)

製品の概要

製品名	Anti-ATP5O antibody [4C11C10D12]
製品の詳細	Mouse monoclonal [4C11C10D12] to ATP5O
由来種	Mouse
特異性	Antigen retrieval is required for ICC. Immediately before the permeabilization step, heat the coverslips for 10 minutes in 100mM Tris, 5% urea, pH 9.5 at 95°C for 10 minutes.
アプリケーション	適用あり: ICC/IF, WB, Flow Cyt, IHC-P
種交差性	交差種: Cow, Human, African green monkey 非交差種: Mouse, Rat
免疫原	Recombinant full length protein. This information is considered to be commercially sensitive.
ポジティブ・コントロール	Isolated mitochondria from Human heart and Bovine heart, Cultured Human embryonic lung-derived fibroblasts (strain MRC5), Human colon tissue, HL-60 cells WB: Recombinant Human ATP5O protein (ab104549) cell lysate.
特記事項	<p>This antibody clone is manufactured by Abcam. If you require a custom buffer formulation or conjugation for your experiments, please contact orders@abcam.com.</p> <p>The Life Science industry has been in the grips of a reproducibility crisis for a number of years. Abcam is leading the way in addressing this with our range of recombinant monoclonal antibodies and knockout edited cell lines for gold-standard validation. Please check that this product meets your needs before purchasing.</p> <p>If you have any questions, special requirements or concerns, please send us an inquiry and/or contact our Support team ahead of purchase. Recommended alternatives for this product can be found below, along with publications, customer reviews and Q&As</p> <p>Product was previously marketed under the MitoSciences sub-brand.</p>

製品の特性

製品の状態	Liquid
保存方法	Shipped at 4°C. Store at +4°C. Do Not Freeze.
バッファー	pH: 7.5 Preservative: 0.02% Sodium azide Constituent: HEPES buffered saline

精製度	IgG fraction
特記事項 (精製)	Near homogeneity as judged by SDS-PAGE. ab110276 was produced in vitro using hybridomas grown in serum-free medium, and then purified by biochemical fractionation.
ポリ/モノ	モノクローナル
クローン名	4C11C10D12
アイソタイプ	IgG1
軽鎖の種類	kappa

アプリケーション

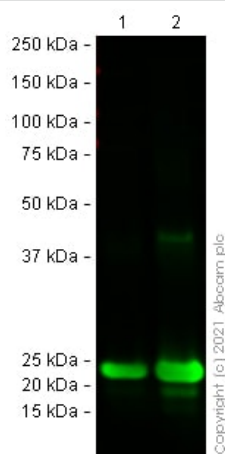
The Abpromise guarantee **Abpromise保証は、**次のテスト済みアプリケーションにおけるab110276の使用に適用されます
アプリケーションノートには、推奨の開始希釈率がありますが、適切な希釈率につきましてはご検討ください。

アプリケーション	Abreviews	特記事項
ICC/IF		Use a concentration of 0.5 - 1 µg/ml. Perform heat-induced antigen-retrieval with 100mM Tris, 5% urea, pH 9.5 at 95°C for 10 minutes immediately before permeabilization.
WB		Use a concentration of 0.5 µg/ml. Predicted molecular weight: 23 kDa.
Flow Cyt		Use a concentration of 1 µg/ml. ab170190 - Mouse monoclonal IgG1, is suitable for use as an isotype control with this antibody.
IHC-P		1/500.

ターゲット情報

機能	Mitochondrial membrane ATP synthase (F(1)F(0) ATP synthase or Complex V) produces ATP from ADP in the presence of a proton gradient across the membrane which is generated by electron transport complexes of the respiratory chain. F-type ATPases consist of two structural domains, F(1) - containing the extramembraneous catalytic core and F(0) - containing the membrane proton channel, linked together by a central stalk and a peripheral stalk. During catalysis, ATP synthesis in the catalytic domain of F(1) is coupled via a rotary mechanism of the central stalk subunits to proton translocation. Part of the complex F(0) domain and the peripheric stalk, which acts as a stator to hold the catalytic alpha(3)beta(3) subcomplex and subunit a/ATP6 static relative to the rotary elements.
配列類似性	Belongs to the ATPase delta chain family.
細胞内局在	Mitochondrion. Mitochondrion inner membrane.

画像



Western blot - Anti-ATP5O antibody [4C11C10D12]
(ab110276)

All lanes : Anti-ATP5O antibody [4C11C10D12] (ab110276) at 1 $\mu\text{g/ml}$

Lane 1 : Recombinant Human ATP5O protein ([ab104549](#)) cell lysate at 0.1 μg

Lane 2 : Recombinant Human ATP5O protein ([ab104549](#)) cell lysate at 0.5 μg

Performed under reducing conditions.

Predicted band size: 23 kDa

Observed band size: 24 kDa

False colour image of Western blot: Anti-ATP5O antibody [4C11C10D12] staining at 1 $\mu\text{g/ml}$, shown in green. In Western blot, ab110276 was shown to bind specifically to ATP5O. First, samples were run on an SDS-PAGE gel then transferred onto a nitrocellulose membrane. Membranes were blocked in 3 % milk in TBS-0.1 % Tween® 20 (TBS-T) before incubation with primary antibodies overnight at 4°C. Blots were washed four times in TBS-T, incubated with secondary antibodies for 1 h at room temperature, washed again four times then imaged. Secondary antibodies used were Goat anti-Mouse IgG H&L (IRDye® 800CW) preabsorbed ([ab216772](#)) at 1/20000 dilution.



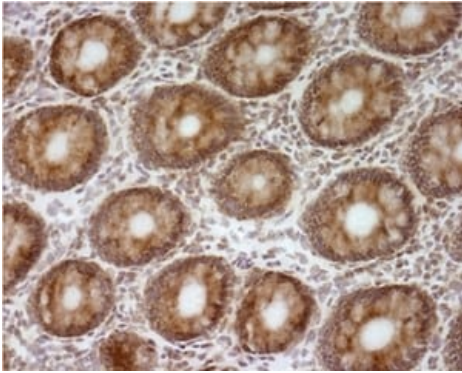
Western blot - Anti-ATP5O antibody [4C11C10D12]
(ab110276)

All lanes : Anti-ATP5O antibody [4C11C10D12] (ab110276) at 0.5 $\mu\text{g/ml}$

Lane 1 : Human heart mitochondria at 5 μg

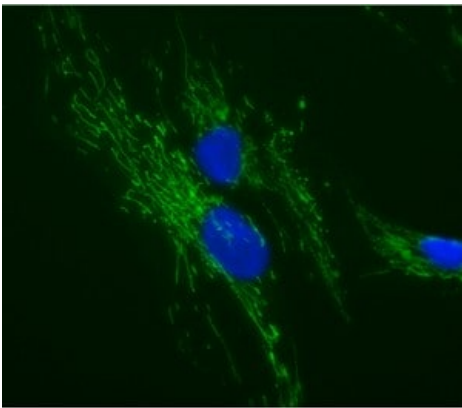
Lane 2 : Bovine heart mitochondria at 1 μg

Predicted band size: 23 kDa



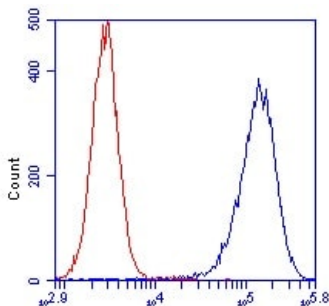
Immunohistochemistry (Formalin/PFA-fixed paraffin-embedded sections) - Anti-ATP5O antibody [4C11C10D12] (ab110276)

Human colon tissue fixed with 4% PFA and antibody detection with ab110276 using the ABC system. ab110276 diluted 1/500 and incubated for 1 hour. Sections were incubated in peroxidase-conjugated rabbit anti-mouse immunoglobulins (diluted 1/100 in 4% BSA in PBST) for 1 hour at room temp.



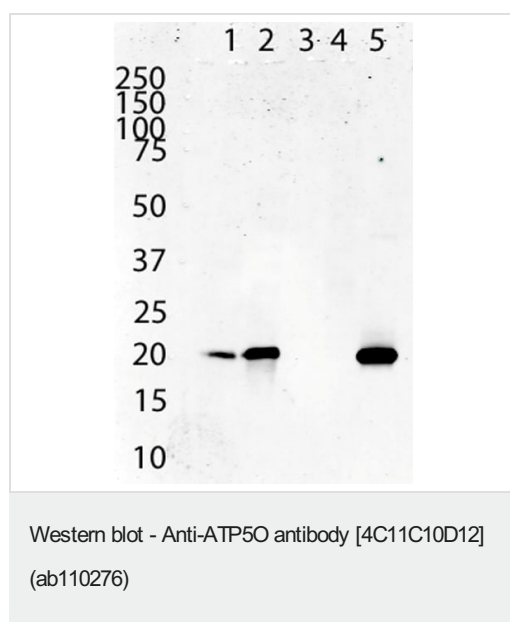
Immunocytochemistry/ Immunofluorescence - Anti-ATP5O antibody [4C11C10D12] (ab110276)

Mitochondrial localization of ATP5O. Cultured Human embryonic lung-derived fibroblasts (strain MRC5) were fixed, treated for heat-induced antigen retrieval, permeabilized and then labeled with ab110276 (0.5 $\mu\text{g}/\text{ml}$) followed by an AlexaFluor® 488-conjugated-goat-anti-mouse IgG1 isotype specific secondary antibody (2 $\mu\text{g}/\text{ml}$).



Flow Cytometry - Anti-ATP5O antibody [4C11C10D12] (ab110276)

HL-60 cells were stained with 1 $\mu\text{g}/\text{mL}$ ab110276 (blue) or an equal amount of an isotype control antibody (red) and analyzed by flow cytometry.



All lanes : Anti-ATP5O antibody [4C11C10D12] (ab110276) at 1 µg/ml

Lane 1 : HDFn (human) cell lysates at 20 µg

Lane 2 : COS7 (monkey) cell lysates at 20 µg

Lane 3 : H4IIE (rat) cell lysates at 20 µg

Lane 4 : MEF (mouse) cell lysates at 20 µg

Lane 5 : bovine heart mitochondria lysates at 5 µg

Predicted band size: 23 kDa

Secondary antibody: Goat-Anti-Mouse-IR800 1:4000

Please note: All products are "FOR RESEARCH USE ONLY. NOT FOR USE IN DIAGNOSTIC PROCEDURES"

Our Abpromise to you: Quality guaranteed and expert technical support

- Replacement or refund for products not performing as stated on the datasheet
- Valid for 12 months from date of delivery
- Response to your inquiry within 24 hours
- We provide support in Chinese, English, French, German, Japanese and Spanish
- Extensive multi-media technical resources to help you
- We investigate all quality concerns to ensure our products perform to the highest standards

If the product does not perform as described on this datasheet, we will offer a refund or replacement. For full details of the Abpromise, please visit <https://www.abcam.co.jp/abpromise> or contact our technical team.

Terms and conditions

- Guarantee only valid for products bought direct from Abcam or one of our authorized distributors