

### Anti-ATP5H antibody [7F9BG1] ab110275

★★★★★ **3 Abreviews** **16 References** **画像数 4**

#### 製品の概要

---

製品名	Anti-ATP5H antibody [7F9BG1]
製品の詳細	Mouse monoclonal [7F9BG1] to ATP5H
由来種	Mouse
アプリケーション	<b>適用あり:</b> WB, ICC/IF, Flow Cyt
種交差性	<b>交差種:</b> Mouse, Rat, Cow, Human, African green monkey
免疫原	Full length native protein (purified). This information is proprietary to Abcam and/or its suppliers.
ポジティブ・コントロール	Isolated mitochondria from Human heart, Bovine heart, Rat heart, Mouse heart, and HepG2, Cultured Human embryonic lung-derived fibroblasts (strain MRC5), HeLa cells
特記事項	<p>For mouse and rat samples, this antibody will only recognize ATP5H in purified mitochondrial samples. Mouse and rat cell lysates and tissue homogenates are not recommended with this antibody.</p> <p>This antibody clone is manufactured by Abcam. If you require a custom buffer formulation or conjugation for your experiments, please contact <a href="mailto:orders@abcam.com">orders@abcam.com</a>.</p> <p>The Life Science industry has been in the grips of a reproducibility crisis for a number of years. Abcam is leading the way in addressing this with our range of recombinant monoclonal antibodies and knockout edited cell lines for gold-standard validation. Please check that this product meets your needs before purchasing.</p> <p>If you have any questions, special requirements or concerns, please send us an inquiry and/or contact our Support team ahead of purchase. Recommended alternatives for this product can be found below, along with publications, customer reviews and Q&amp;As</p> <p>Product was previously marketed under the MitoSciences sub-brand.</p>

#### 製品の特性

---

製品の状態	Liquid
保存方法	Shipped at 4°C. Store at +4°C. Do Not Freeze.
バッファー	pH: 7.5 Preservative: 0.02% Sodium azide Constituent: HEPES buffered saline
精製度	Immunogen affinity purified

特記事項(精製)	Near homogeneity as judged by SDS-PAGE. ab110275 was produced in vitro using hybridomas grown in serum-free medium, and then purified by biochemical fractionation.
ポリ/モノ	モノクローナル
クローン名	7F9BG1
アイソタイプ	IgG2b
軽鎖の種類	kappa

## アプリケーション

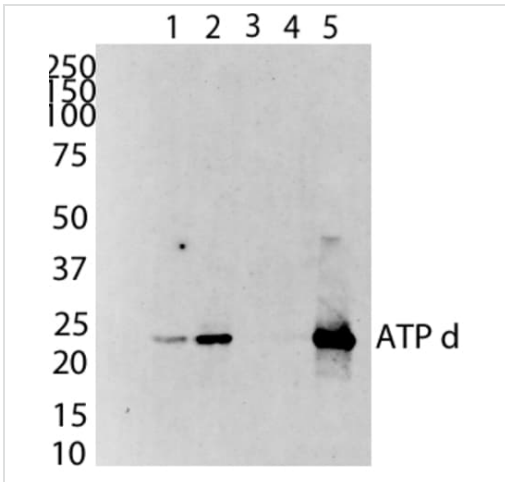
**The Abpromise guarantee** **Abpromise保証は、次のテスト済みアプリケーションにおけるab110275の使用に適用されず**  
 アプリケーションノートには、推奨の開始希釈率がありますが、適切な希釈率につきましてはご検討ください。

アプリケーション	Abreviews	特記事項
WB	★★★★★ (2)	Use a concentration of 1 µg/ml. Predicted molecular weight: 18 kDa.
ICC/IF		Use a concentration of 1 - 5 µg/ml. (heat-induced antigen-retrieval improvessignal)
Flow Cyt	★★★★★ (1)	Use a concentration of 1 µg/ml. <b>ab170192</b> - Mouse monoclonal IgG2b, is suitable for use as an isotype control with this antibody.

## ターゲット情報

機能	Mitochondrial membrane ATP synthase (F(1)F(0) ATP synthase or Complex V) produces ATP from ADP in the presence of a proton gradient across the membrane which is generated by electron transport complexes of the respiratory chain. F-type ATPases consist of two structural domains, F(1) - containing the extramembraneous catalytic core, and F(0) - containing the membrane proton channel, linked together by a central stalk and a peripheral stalk. During catalysis, ATP synthesis in the catalytic domain of F(1) is coupled via a rotary mechanism of the central stalk subunits to proton translocation. Part of the complex F(0) domain and the peripheric stalk, which acts as a stator to hold the catalytic alpha(3)beta(3) subcomplex and subunit a/ATP6 static relative to the rotary elements.
配列類似性	Belongs to the ATPase d subunit family.
細胞内局在	Mitochondrion. Mitochondrion inner membrane.

## 画像



Western blot - Anti-ATP5H antibody [7F9BG1] (ab110275)

**All lanes :** Anti-ATP5H antibody [7F9BG1] (ab110275) at 1 µg/ml

**Lane 1 :** HDFn (human) cell lysates at 20 µg

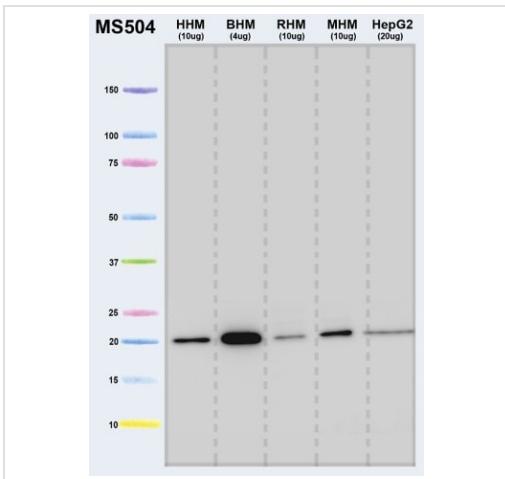
**Lane 2 :** COS-7 (African green monkey kidney fibroblast-like cell line) cell lysates at 20 µg

**Lane 3 :** H4IIE (rat) cell lysates at 20 µg

**Lane 4 :** MEF (mouse) cell lysates at 20 µg

**Lane 5 :** bovine heart mitochondria lysates at 5 µg

**Predicted band size:** 18 kDa



Western blot - Anti-ATP5H antibody [7F9BG1] (ab110275)

**All lanes :** Anti-ATP5H antibody [7F9BG1] (ab110275) at 1/1 dilution

**Lane 1 :** Human heart mitochondria at 10 µg

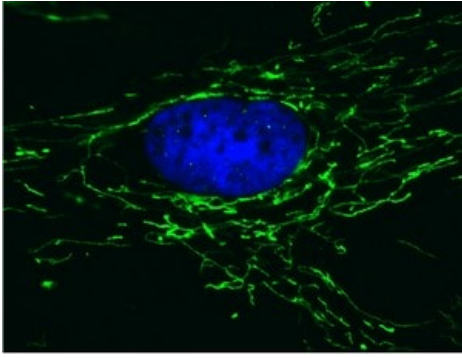
**Lane 2 :** Bovine heart mitochondria at 4 µg

**Lane 3 :** Rat heart mitochondria at 10 µg

**Lane 4 :** Mouse heart mitochondria at 10 µg

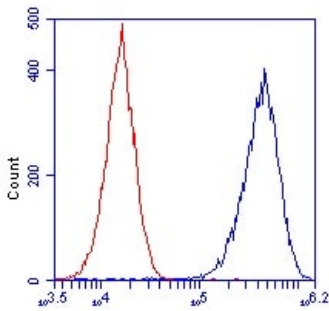
**Lane 5 :** HepG2 mitochondria at 20 µg

**Predicted band size:** 18 kDa



Immunocytochemistry/ Immunofluorescence - Anti-ATP5H antibody [7F9BG1] (ab110275)

Mitochondrial localization of ATP5H. Cultured Human embryonic lung-derived fibroblasts (strain MRC5) were fixed, permeabilized and then labeled with ab110275 (5  $\mu\text{g/ml}$ ) followed by an AlexaFluor® 488-conjugated-goat-anti-mouse IgG(H+L) secondary antibody (2  $\mu\text{g/ml}$ ).



Flow Cytometry - Anti-ATP5H antibody [7F9BG1] (ab110275)

HeLa cells were stained with 1  $\mu\text{g/mL}$  ab110275 (blue) or an equal amount of an isotype control antibody (red) and analyzed by flow cytometry.

**Please note:** All products are "FOR RESEARCH USE ONLY. NOT FOR USE IN DIAGNOSTIC PROCEDURES"

### Our Abpromise to you: Quality guaranteed and expert technical support

- Replacement or refund for products not performing as stated on the datasheet
- Valid for 12 months from date of delivery
- Response to your inquiry within 24 hours
- We provide support in Chinese, English, French, German, Japanese and Spanish
- Extensive multi-media technical resources to help you
- We investigate all quality concerns to ensure our products perform to the highest standards

If the product does not perform as described on this datasheet, we will offer a refund or replacement. For full details of the Abpromise, please visit <https://www.abcam.co.jp/abpromise> or contact our technical team.

### Terms and conditions

- Guarantee only valid for products bought direct from Abcam or one of our authorized distributors