


Anti-ATP5D antibody ab97491

6 References [画像数 3](#)

医薬用外劇物

製品の概要

製品名	Anti-ATP5D antibody
製品の詳細	Rabbit polyclonal to ATP5D
由来種	Rabbit
アプリケーション	適用あり: WB, IHC-P
種交差性	交差種: Mouse, Human 交差が予測される動物種: Rat, Cow 
免疫原	Recombinant protein fragment, corresponding to a region within amino acids 1-158 of Human ATP5D (NP_001678).
ポジティブ・コントロール	293T, A431, H1299, HeLaS3, HepG2, MOLT4 or Raji cell lysate.
特記事項	<p>The Life Science industry has been in the grips of a reproducibility crisis for a number of years. Abcam is leading the way in addressing this with our range of recombinant monoclonal antibodies and knockout edited cell lines for gold-standard validation. Please check that this product meets your needs before purchasing.</p> <p>If you have any questions, special requirements or concerns, please send us an inquiry and/or contact our Support team ahead of purchase. Recommended alternatives for this product can be found below, along with publications, customer reviews and Q&As</p>

製品の特性

製品の状態	Liquid
保存方法	Shipped at 4°C. Upon delivery aliquot and store at -20°C or -80°C. Avoid repeated freeze / thaw cycles.
バッファー	pH: 7.00 Preservative: 0.01% Thimerosal (merthiolate) Constituents: 78.99% PBS, 1% BSA, 20% Glycerol (glycerin, glycerine)
精製度	Immunogen affinity purified
ポリ/モノ	ポリクローナル
アイソタイプ	IgG

アプリケーション

The Abpromise guarantee **Abpromise保証は、次のテスト済みアプリケーションにおけるab97491の使用に適用されず**
アプリケーションノートには、推奨の開始希釈率がありますが、適切な希釈率につきましてはご検討ください。

アプリケーション	Abreviews	特記事項
WB		1/500 - 1/3000. Predicted molecular weight: 17 kDa.
IHC-P		1/250.

ターゲット情報

機能

Mitochondrial membrane ATP synthase (F(1)F(0) ATP synthase or Complex V) produces ATP from ADP in the presence of a proton gradient across the membrane which is generated by electron transport complexes of the respiratory chain. F-type ATPases consist of two structural domains, F(1) - containing the extramembraneous catalytic core, and F(0) - containing the membrane proton channel, linked together by a central stalk and a peripheral stalk. During catalysis, ATP turnover in the catalytic domain of F(1) is coupled via a rotary mechanism of the central stalk subunits to proton translocation. Part of the complex F(1) domain and of the central stalk which is part of the complex rotary element. Rotation of the central stalk against the surrounding alpha(3)beta(3) subunits leads to hydrolysis of ATP in three separate catalytic sites on the beta subunits.

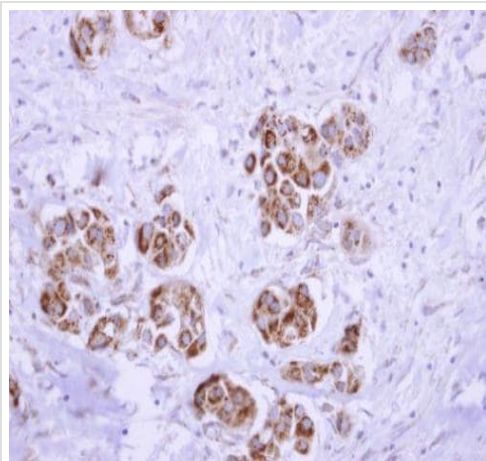
配列類似性

Belongs to the ATPase epsilon chain family.

細胞内局在

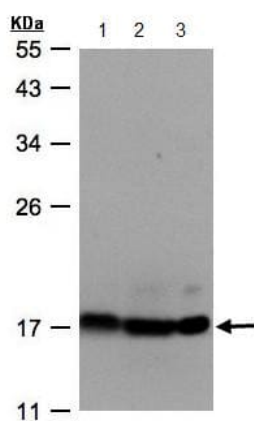
Mitochondrion. Mitochondrion inner membrane.

画像



Immunohistochemistry (Formalin/PFA-fixed paraffin-embedded sections) of Human breast cancer tissue, stained with ab97491 at 1/250.

Immunohistochemistry (Formalin/PFA-fixed paraffin-embedded sections) - Anti-ATP5D antibody (ab97491)



Western blot - Anti-ATP5D antibody (ab97491)

All lanes : Anti-ATP5D antibody (ab97491) at 1/500 dilution

Lane 1 : HepG2 whole cell lysate

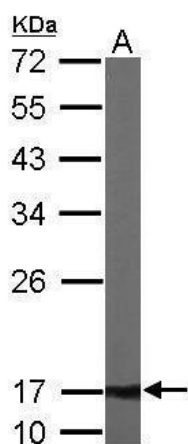
Lane 2 : MOLT4 whole cell lysate

Lane 3 : Raji whole cell lysate

Lysates/proteins at 30 µg per lane.

Predicted band size: 17 kDa

12% SDS PAGE



Western blot - Anti-ATP5D antibody (ab97491)

Anti-ATP5D antibody (ab97491) at 1/1000 dilution + Mouse brain at 50 µg

Predicted band size: 17 kDa

Please note: All products are "FOR RESEARCH USE ONLY. NOT FOR USE IN DIAGNOSTIC PROCEDURES"

Our Abpromise to you: Quality guaranteed and expert technical support

- Replacement or refund for products not performing as stated on the datasheet
- Valid for 12 months from date of delivery
- Response to your inquiry within 24 hours
- We provide support in Chinese, English, French, German, Japanese and Spanish
- Extensive multi-media technical resources to help you
- We investigate all quality concerns to ensure our products perform to the highest standards

If the product does not perform as described on this datasheet, we will offer a refund or replacement. For full details of the Abpromise, please visit <https://www.abcam.co.jp/abpromise> or contact our technical team.

Terms and conditions

- Guarantee only valid for products bought direct from Abcam or one of our authorized distributors