


Anti-ATP1B1 antibody ab96292

1 Abbreviations 1 References 両極数 1

医薬用外劇物

製品の概要

製品名	Anti-ATP1B1 antibody
製品の詳細	Rabbit polyclonal to ATP1B1
由来種	Rabbit
アプリケーション	適用あり: WB, IHC-P
種交差性	交差種: Human 交差が予測される動物種: Rabbit, Guinea pig, Dog, Pig 
免疫原	Recombinant fragment corresponding to Human ATP1B1 aa 83-303. Database link: P05026
ポジティブ・コントロール	MOLT4, A431, HepG2 and Raji cell lysates for WB and MDAMB468 xenograft for IHC-P
特記事項	<p>The Life Science industry has been in the grips of a reproducibility crisis for a number of years. Abcam is leading the way in addressing this with our range of recombinant monoclonal antibodies and knockout edited cell lines for gold-standard validation. Please check that this product meets your needs before purchasing.</p> <p>If you have any questions, special requirements or concerns, please send us an inquiry and/or contact our Support team ahead of purchase. Recommended alternatives for this product can be found below, along with publications, customer reviews and Q&As</p>

製品の特性

製品の状態	Liquid
保存方法	Shipped at 4°C. Upon delivery aliquot and store at -20°C or -80°C. Avoid repeated freeze / thaw cycles.
バッファー	pH: 7.00 Preservative: 0.01% Thimerosal (merthiolate) Constituents: 78.99% PBS, 1% BSA, 20% Glycerol (glycerin, glycerine)
精製度	Immunogen affinity purified
ポリ/モノ	ポリクローナル
アイソタイプ	IgG

アプリケーション

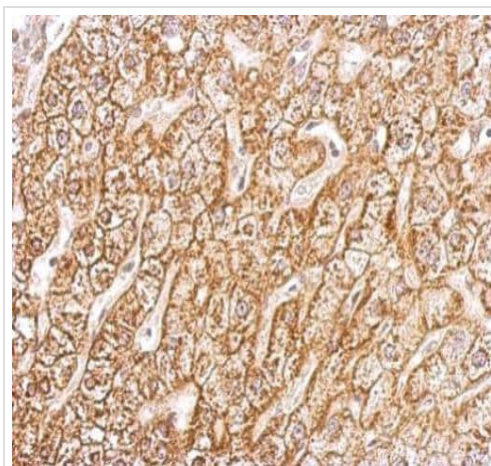
The Abpromise guarantee Abpromise保証は、次のテスト済みアプリケーションにおけるab96292の使用に適用されます
アプリケーションノートには、推奨の開始希釈率がありますが、適切な希釈率につきましてはご確認ください。

アプリケーション	Abreviews	特記事項
WB		1/1000 - 1/10000. Predicted molecular weight: 35 kDa. Optimal dilutions/concentrations should be determined by the researcher
IHC-P		1/100 - 1/1000. Optimal dilutions/concentrations should be determined by the researcher

ターゲット情報

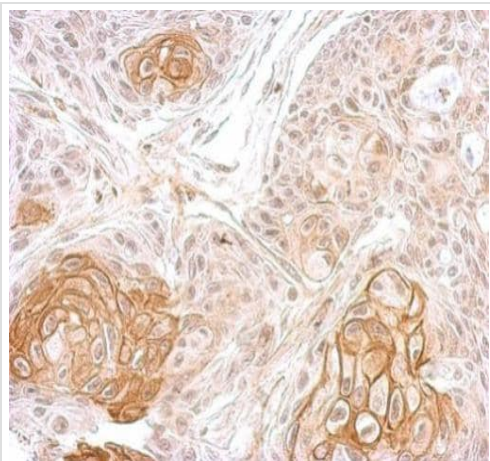
機能	This is the non-catalytic component of the active enzyme, which catalyzes the hydrolysis of ATP coupled with the exchange of Na(+) and K(+) ions across the plasma membrane. The beta subunit regulates, through assembly of alpha/beta heterodimers, the number of sodium pumps transported to the plasma membrane.
組織特異性	Found in most tissues.
配列類似性	Belongs to the X(+)/potassium ATPases subunit beta family.
細胞内局在	Membrane.

画像



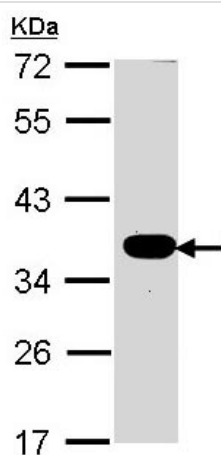
ab96292 detects ATP1B1 protein at membrane on human hepatoma by immunohistochemical analysis. Sample: Paraffin-embedded hepatoma tissue. Antibody dilution: 1:500

Immunohistochemistry (Formalin/PFA-fixed paraffin-embedded sections) - Anti-ATP1B1 antibody (ab96292)



Immunohistochemistry (Formalin/PFA-fixed paraffin-embedded sections) - Anti-ATP1B1 antibody (ab96292)

ab96292 detects ATP1B1 protein at membrane on Cal27 (human) xenograft by immunohistochemical analysis. Sample: Paraffin-embedded Cal27 xenograft. Antibody dilution: 1:500

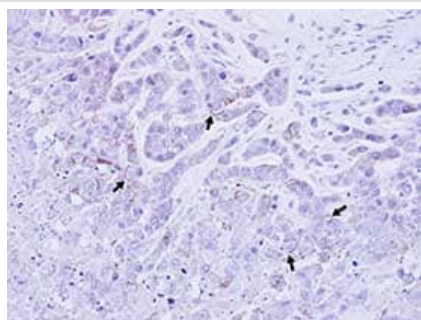


Western blot - Anti-ATP1B1 antibody (ab96292)

Anti-ATP1B1 antibody (ab96292) at 1/1000 dilution + MOLT4 whole cell lysate at 30 µg

Predicted band size: 35 kDa

10% SDS-PAGE



Immunohistochemistry (Formalin/PFA-fixed paraffin-embedded sections) - Anti-ATP1B1 antibody (ab96292)

ab96292, at 1/100 dilution, staining beta Sodium Potassium ATPase in paraffin-embedded MDAMB468 (human) xenograft by Immunohistochemistry.

Please note: All products are "FOR RESEARCH USE ONLY. NOT FOR USE IN DIAGNOSTIC PROCEDURES"

Our Abpromise to you: Quality guaranteed and expert technical support

- Replacement or refund for products not performing as stated on the datasheet
- Valid for 12 months from date of delivery
- Response to your inquiry within 24 hours
- We provide support in Chinese, English, French, German, Japanese and Spanish
- Extensive multi-media technical resources to help you
- We investigate all quality concerns to ensure our products perform to the highest standards

If the product does not perform as described on this datasheet, we will offer a refund or replacement. For full details of the Abpromise, please visit <https://www.abcam.co.jp/abpromise> or contact our technical team.

Terms and conditions

- Guarantee only valid for products bought direct from Abcam or one of our authorized distributors