


Anti-ATP1B1 antibody [464.8] ab8344

★★★★★ **1 Abreviews** **12 References** **画像数 2**

製品の概要

製品名	Anti-ATP1B1 antibody [464.8]
製品の詳細	Mouse monoclonal [464.8] to ATP1B1
由来種	Mouse
アプリケーション	適用あり: WB, Flow Cyt (Intra)
種交差性	交差種: Human 交差が予測される動物種: Rat, Cow, Dog, Pig 
免疫原	Full length native protein (purified). This information is proprietary to Abcam and/or its suppliers.
ポジティブ・コントロール	WB: Human kidney tissue lysates Flow Cyt (Intra): HepG2 cells.
特記事項	<p>This antibody clone is manufactured by Abcam. If you require a custom buffer formulation or conjugation for your experiments, please contact orders@abcam.com.</p> <p>The Life Science industry has been in the grips of a reproducibility crisis for a number of years. Abcam is leading the way in addressing this with our range of recombinant monoclonal antibodies and knockout edited cell lines for gold-standard validation. Please check that this product meets your needs before purchasing.</p> <p>If you have any questions, special requirements or concerns, please send us an inquiry and/or contact our Support team ahead of purchase. Recommended alternatives for this product can be found below, along with publications, customer reviews and Q&As</p>

製品の特性

製品の状態	Liquid
保存方法	Shipped at 4°C. Upon delivery aliquot. Store at -20°C or -80°C. Avoid freeze / thaw cycle.
バッファー	pH: 7.40 Preservative: 0.02% Sodium azide Constituent: PBS Contains 0.4M arginine
精製度	Protein G purified
ポリ/モノ	モノクローナル
クローン名	464.8

アイソタイプ IgG2a
軽鎖の種類 kappa

アプリケーション

The Abpromise guarantee **Abpromise保証は、** 次のテスト済みアプリケーションにおけるab8344の使用に適用されます
アプリケーションノートには、推奨の開始希釈率がありますが、適切な希釈率につきましてはご検討ください。

アプリケーション	Abreviews	特記事項
WB	★★★★★ (1)	1/500. Detects a band of approximately 45 kDa (predicted molecular weight: 35 kDa).
Flow Cyt (Intra)		Use 1µg for 10 ⁶ cells. ab170191 - Mouse monoclonal IgG2a, is suitable for use as an isotype control with this antibody.

ターゲット情報

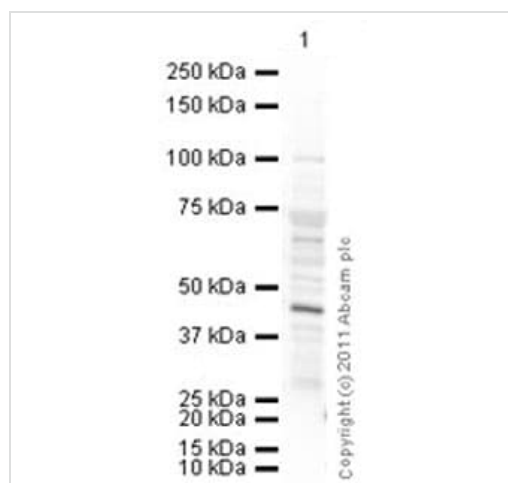
機能 This is the non-catalytic component of the active enzyme, which catalyzes the hydrolysis of ATP coupled with the exchange of Na(+) and K(+) ions across the plasma membrane. The beta subunit regulates, through assembly of alpha/beta heterodimers, the number of sodium pumps transported to the plasma membrane.

組織特異性 Found in most tissues.

配列類似性 Belongs to the X(+)/potassium ATPases subunit beta family.

細胞内局在 Membrane.

画像



Western blot - Anti-ATP1B1 antibody [464.8] (ab8344)

Anti-ATP1B1 antibody [464.8] (ab8344) at 1/500 dilution + Human kidney tissue lysate - total protein (**ab30203**) at 20 µg

Secondary

Granzyme B overexpression 293T lysate (whole cell) (**ab94040**) at 1/10000 dilution

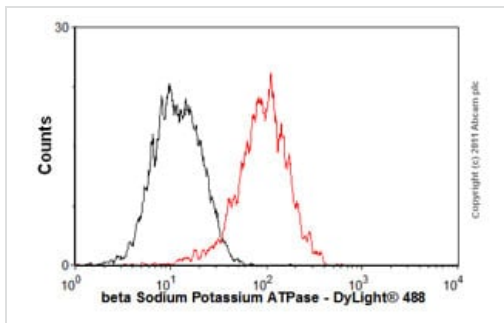
Developed using the ECL technique.

Performed under reducing conditions.

Predicted band size: 35 kDa

Additional bands at: 45 kDa. We are unsure as to the identity of these extra bands.

Exposure time: 4 minutes



Flow Cytometry (Intracellular) - Anti-ATP1B1 antibody [464.8] (ab8344)

Overlay histogram showing HepG2 cells stained with ab8344 (red line). The cells were fixed with 80% methanol (5 min) and then permeabilized with 0.1% PBS-Tween for 20 min. The cells were then incubated in 1x PBS / 10% normal goat serum / 0.3M glycine to block non-specific protein-protein interactions followed by the antibody (ab8344, 1/100 dilution) for 30 min at 22°C. The secondary antibody used was DyLight® 488 goat anti-mouse IgG (H+L) ([ab96879](#)) at 1/500 dilution for 30 min at 22°C. Isotype control antibody (black line) was mouse IgG2a [CIGG2A] ([ab91361](#), 1µg/1x10⁶ cells) used under the same conditions. Acquisition of >5,000 events was performed.

Please note: All products are "FOR RESEARCH USE ONLY. NOT FOR USE IN DIAGNOSTIC PROCEDURES"

Our Abpromise to you: Quality guaranteed and expert technical support

- Replacement or refund for products not performing as stated on the datasheet
- Valid for 12 months from date of delivery
- Response to your inquiry within 24 hours
- We provide support in Chinese, English, French, German, Japanese and Spanish
- Extensive multi-media technical resources to help you
- We investigate all quality concerns to ensure our products perform to the highest standards

If the product does not perform as described on this datasheet, we will offer a refund or replacement. For full details of the Abpromise, please visit <https://www.abcam.co.jp/abpromise> or contact our technical team.

Terms and conditions

- Guarantee only valid for products bought direct from Abcam or one of our authorized distributors