


# Anti-ATP-binding cassette sub-family A member 3 antibody ab99856

★★★★★ [2 Abreviews](#) [2 References](#) [画像数 1](#)

### 製品の概要

製品名	Anti-ATP-binding cassette sub-family A member 3 antibody
製品の詳細	Rabbit polyclonal to ATP-binding cassette sub-family A member 3
由来種	Rabbit
アプリケーション	<b>適用あり:</b> WB, ICC/IF
種交差性	<b>交差種:</b> Human <b>交差が予測される動物種:</b> Mouse, Rat 
免疫原	Recombinant fragment corresponding to Human ATP-binding cassette sub-family A member 3 aa 1 to the C-terminus. BC062779.1 Database link: <a href="#">Q99758-2</a>
特記事項	<p>The Life Science industry has been in the grips of a reproducibility crisis for a number of years. Abcam is leading the way in addressing this with our range of recombinant monoclonal antibodies and knockout edited cell lines for gold-standard validation. Please check that this product meets your needs before purchasing.</p> <p>If you have any questions, special requirements or concerns, please send us an inquiry and/or contact our Support team ahead of purchase. Recommended alternatives for this product can be found below, along with publications, customer reviews and Q&amp;As</p>

### 製品の特性

製品の状態	Liquid
保存方法	Shipped at 4°C. Store at +4°C short term (1-2 weeks). Upon delivery aliquot. Store at -20°C. Avoid freeze / thaw cycle.
バッファー	pH: 7.20 Preservative: 0.02% Sodium azide Constituent: PBS
精製度	Protein A purified
ポリ/モノ	ポリクローナル
アイソタイプ	IgG

## アプリケーション

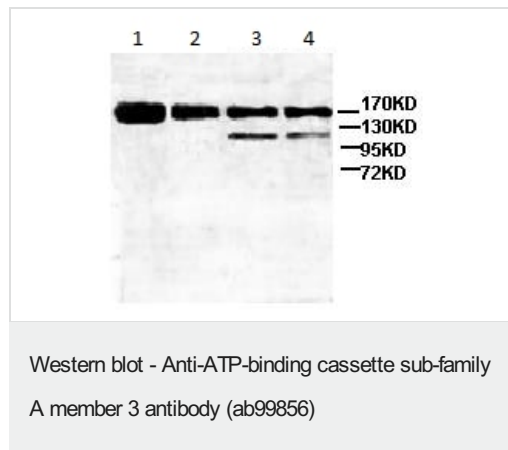
**The Abpromise guarantee** Abpromise保証は、 次のテスト済みアプリケーションにおけるab99856の使用に適用されます  
アプリケーションノートには、推奨の開始希釈率がありますが、適切な希釈率につきましてはご確認ください。

アプリケーション	Abreviews	特記事項
WB		1/1000 - 1/2000. Predicted molecular weight: 191 kDa.
ICC/IF	★★★★★ (1)	Use at an assay dependent concentration.

## ターゲット情報

機能	Plays an important role in the formation of pulmonary surfactant, probably by transporting lipids such as cholesterol.
組織特異性	Highly expressed in lung, followed by brain, pancreas, skeletal muscle and heart. Weakly expressed in placenta, kidney and liver. Also expressed in medullary thyroid carcinoma cells (MTC) and in C-cell carcinoma.
関連疾患	Defects in ABCA3 are the cause of pulmonary surfactant metabolism dysfunction type 3 (SMDP3) [MIM:610921]; also called pulmonary alveolar proteinosis due to ABCA3 deficiency. A rare lung disorder due to impaired surfactant homeostasis. It is characterized by alveolar filling with floccular material that stains positive using the periodic acid-Schiff method and is derived from surfactant phospholipids and protein components. Excessive lipoproteins accumulation in the alveoli results in severe respiratory distress.
配列類似性	Belongs to the ABC transporter superfamily. ABCA family. Contains 2 ABC transporter domains.
ドメイン	Multifunctional polypeptide with two homologous halves, each containing an hydrophobic membrane-anchoring domain and an ATP binding cassette (ABC) domain.
細胞内局在	Membrane.

## 画像



**All lanes :** Anti-ATP-binding cassette sub-family A member 3 antibody (ab99856) at 1/1000 dilution

**Lane 1 :** SW480 cell lysate

**Lane 2 :** Hela cell lysate

**Lane 3 :** Human fetal kidney lysate

**Lane 4 :** Human fetal lung lysate

**Predicted band size:** 191 kDa

**Please note:** All products are "FOR RESEARCH USE ONLY. NOT FOR USE IN DIAGNOSTIC PROCEDURES"

### **Our Abpromise to you: Quality guaranteed and expert technical support**

---

- Replacement or refund for products not performing as stated on the datasheet
- Valid for 12 months from date of delivery
- Response to your inquiry within 24 hours
  
- We provide support in Chinese, English, French, German, Japanese and Spanish
- Extensive multi-media technical resources to help you
- We investigate all quality concerns to ensure our products perform to the highest standards

If the product does not perform as described on this datasheet, we will offer a refund or replacement. For full details of the Abpromise, please visit <https://www.abcam.co.jp/abpromise> or contact our technical team.

### **Terms and conditions**

---

- Guarantee only valid for products bought direct from Abcam or one of our authorized distributors